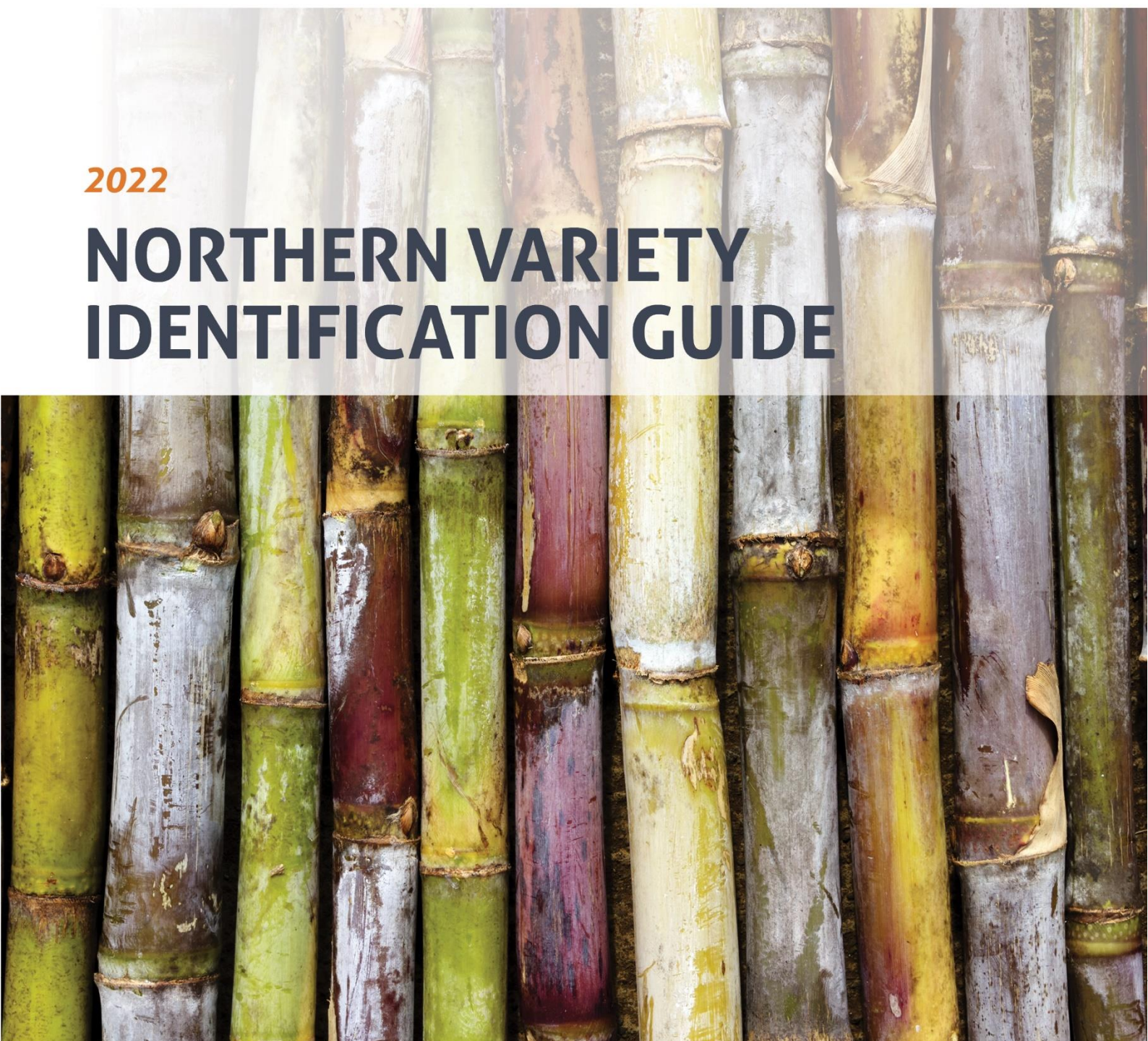


2022

# NORTHERN VARIETY IDENTIFICATION GUIDE





# CONTENTS

<b>2</b>	2022 NORTHERN RVC RECOMMENDED VARIETIES	<b>44</b>	Q253 <sup>Ⓢ</sup> (QN80-3425 X Q209 <sup>Ⓢ</sup> )
<b>4</b>	VARIETY IDENTIFICATION DESCRIPTORS	<b>46</b>	Q256 <sup>Ⓢ</sup> (N21 X Q135)
<b>10</b>	KQ228 <sup>Ⓢ</sup> (QN80-3425 X CP74-2005)	<b>48</b>	SRA1 <sup>Ⓢ</sup> (QN86-2139 X QC90-289)
<b>12</b>	Q183 (Q124 X H56-752)	<b>50</b>	SRA3 <sup>Ⓢ</sup> (QN86-2214 X Q200 <sup>Ⓢ</sup> )
<b>14</b>	Q200 <sup>Ⓢ</sup> (QN63-1700 X QN66-2008)	<b>52</b>	SRA6 <sup>Ⓢ</sup> (QN80-3425 X QH93-1197)
<b>16</b>	Q208 <sup>Ⓢ</sup> (Q135 X QN61-1232)	<b>54</b>	SRA7 <sup>Ⓢ</sup> (QS87-8032 X QN86-139)
<b>18</b>	Q231 <sup>Ⓢ</sup> (QN85-1647 X QS80-7441)	<b>56</b>	SRA9 <sup>Ⓢ</sup> (QN81-289 X Q166 <sup>Ⓢ</sup> )
<b>20</b>	Q232 <sup>Ⓢ</sup> (QN80-3425 X QS72-732)	<b>58</b>	SRA10 <sup>Ⓢ</sup> (QN92-157 X QN91-3898)
<b>22</b>	Q237 <sup>Ⓢ</sup> (Q120 X CP57-614)	<b>60</b>	SRA15 <sup>Ⓢ</sup> (QS91-7008 X Q200 <sup>Ⓢ</sup> )
<b>24</b>	Q238 <sup>Ⓢ</sup> (Q138 X Q155)	<b>62</b>	SRA16 <sup>Ⓢ</sup> (QS97-2328 X QN96-1162)
<b>26</b>	Q240 <sup>Ⓢ</sup> (QN81-289 X SP78-3137)	<b>64</b>	SRA25 <sup>Ⓢ</sup> (Q241 <sup>Ⓢ</sup> X QC89-432)
<b>28</b>	Q241 <sup>Ⓢ</sup> (Q138 X SP72-4728)	<b>66</b>	SRA26 <sup>Ⓢ</sup> (QN97-2122 X Q146)
<b>30</b>	Q242 <sup>Ⓢ</sup> (Q170 <sup>Ⓢ</sup> X Q150)	<b>68</b>	SRA27 (QN80-4316 X Q173 <sup>Ⓢ</sup> )
<b>32</b>	Q245 <sup>Ⓢ</sup> (QN80-3425 X Q162)	<b>70</b>	SRA28 <sup>Ⓢ</sup> (Q233 <sup>Ⓢ</sup> X Q135)
<b>34</b>	Q247 <sup>Ⓢ</sup> (Q138 X Q155)	<b>72</b>	SRA32 <sup>Ⓢ</sup> (QN80-3425 X QN86-2168)
<b>36</b>	Q249 <sup>Ⓢ</sup> (QC83-625 X QC90-289)	<b>74</b>	SRA37 <sup>Ⓢ</sup> (QC82-663 X Q205 <sup>Ⓢ</sup> )
<b>38</b>	Q250 <sup>Ⓢ</sup> (QN79-183 X QN89-1043)	<b>76</b>	VARIETY COMPARISONS: Q208 <sup>Ⓢ</sup> , Q250 <sup>Ⓢ</sup> , Q252 <sup>Ⓢ</sup> & Q253 <sup>Ⓢ</sup>
<b>40</b>	Q251 <sup>Ⓢ</sup> (QN81-289 X Q209 <sup>Ⓢ</sup> )	<b>86</b>	VARIETY DESCRIPTION TEMPLATE
<b>42</b>	Q252 <sup>Ⓢ</sup> (Q208 <sup>Ⓢ</sup> X Q96)	<b>87</b>	VARIETY CHARACTERISTICS

# 2022 NORTHERN RVC RECOMMENDED VARIETIES

VARIETY	YEAR RELEASED	PLANTING	RATOONING	SMUT	PACHYMETRA
SRA37 <sup>Ⓛ</sup>	2022	Y	Y	I-R	I-R
SRA32 <sup>Ⓛ</sup>	2022	Y	Y	I	I
SRA28 <sup>Ⓛ</sup>	2020	Y	Y	I-R	R
SRA27	2019	Y	Y	I-R	I-S
SRA26 <sup>Ⓛ</sup>	2019	Y	Y	R	R
SRA25 <sup>Ⓛ</sup>	2019	Y	Y	I-S	R
SRA16 <sup>Ⓛ</sup>	2018	Y	Y	R	R
SRA15 <sup>Ⓛ</sup>	2018	Y	Y	I-S	I-R
SRA14 <sup>Ⓛ</sup>	2022	Y	Y	I-R	R
SRA10 <sup>Ⓛ</sup>	2017	Y	Y	I	I-R
SRA9 <sup>Ⓛ</sup>	2022	Y	Y	I	R
SRA7 <sup>Ⓛ</sup>	2016	Y	Y	I-R	I
SRA6 <sup>Ⓛ</sup>	2016	Y	Y	R	R
SRA5 <sup>Ⓛ</sup>	2022	Y	Y	I-R	I
SRA3 <sup>Ⓛ</sup>	2016	Y	Y	I	I-R
SRA1 <sup>Ⓛ</sup>	2016	N	Y	I-R	I-R
Q256 <sup>Ⓛ</sup>	2013	Y	Y	I	I-S
Q253 <sup>Ⓛ</sup>	2015	Y	Y	R	R
Q252 <sup>Ⓛ</sup>	2015	Y	Y	I-R	I
Q251 <sup>Ⓛ</sup>	2012	Y	Y	I-S	R
Q250 <sup>Ⓛ</sup>	2012	Y	Y	R	I
Q249 <sup>Ⓛ</sup>	2015	Y	Y	R	I-R
Q247 <sup>Ⓛ</sup>	2015	Y	Y	I-R	R
Q245 <sup>Ⓛ</sup>	2015	Y	Y	R	R
Q242 <sup>Ⓛ</sup>	2015	Y	Y	I-R	R
Q241 <sup>Ⓛ</sup>	2010	Y	Y	R	R
Q240 <sup>Ⓛ</sup>	2013	Y	Y	R	I
MQ239 <sup>Ⓛ</sup>	2015	Y	Y	R	I-R
Q238 <sup>Ⓛ</sup>	2012	Y	Y	R	R
Q237 <sup>Ⓛ</sup>	2008	Y	Y	S	S
Q232 <sup>Ⓛ</sup>	2013	Y	Y	I-R	I
Q231 <sup>Ⓛ</sup>	2006	Y	Y	R	R



VARIETY	YEAR RELEASED	PLANTING	RATOONING	SMUT	PACHYMETRA
Q230 <sup>Ⓛ</sup>	2006	Y	Y	S	I-R
KQ228 <sup>Ⓛ</sup>	2007	Y	Y	I	I
Q219 <sup>Ⓛ</sup>	2003	Y	Y	R	R
Q208 <sup>Ⓛ</sup>	2007	Y	Y	I-R	I
Q200 <sup>Ⓛ</sup>	2001	Y	Y	I	I
Q191 <sup>Ⓛ</sup>	2000	Y	Y	S	S
Q190 <sup>Ⓛ</sup>	2005	Y	Y	R	R
Q187 <sup>Ⓛ</sup>	1999	Y	Y	S	R
Q186 <sup>Ⓛ</sup>	1999	Y	Y	S	R
Q183	2006	Y	Y	R	R
Q174 <sup>Ⓛ</sup>	1997	Y	Y	S	I-S
Q138 <sup>Ⓛ</sup>	1986	Y	Y	S	R

# VARIETY IDENTIFICATION DESCRIPTORS

This booklet will help identify certain botanical characteristics of the sugarcane plant that are useful in identifying these newer varieties, and can also be useful in helping discriminate between visually similar varieties.

A general description of each variety and its unique characteristics is given, along with accompanying pictures describing the differences between each of the varieties (including, stalk colour, stalk waxiness, leaf sheath hairs, dewlap colour, auricle shape and size). However, variation of some of these characteristics can be found within each variety depending on the age or health of the crop, the soil type, even location on the stalk.

A comparison of Q208<sup>®</sup>, Q250<sup>®</sup>, Q252<sup>®</sup> and Q253<sup>®</sup> is also given as an example of how similar or different some varieties can be.

## Some useful sugarcane variety descriptors used here:

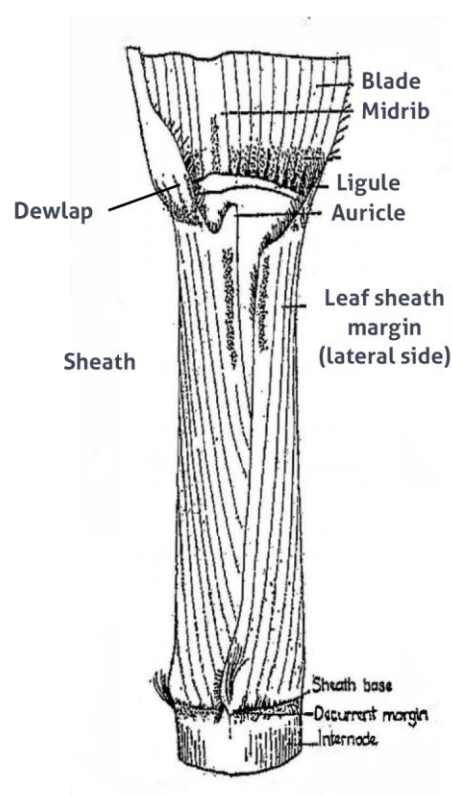
**Leaf sheath hair:** Number/abundance of leaf sheath hairs used here are based on: absent (no hairs present); sparse (hairs can be felt but sometimes not seen); moderate (hairs can be seen but are not dense); and profuse (hairs can easily be seen and are medium to long in length). Distribution of leaf sheath hairs can vary: dorsal only (hairs only found on the back of the leaf sheath); lateral and dorsal (hairs also found on the lateral side of the leaf sheath near the leaf sheath margin).

**Dewlap:** The dewlap is the hinge where the leaf blade joins the leaf sheath. The dewlap will only be mentioned if it is distinct, i.e. of a darker or lighter colour than the leaf itself.

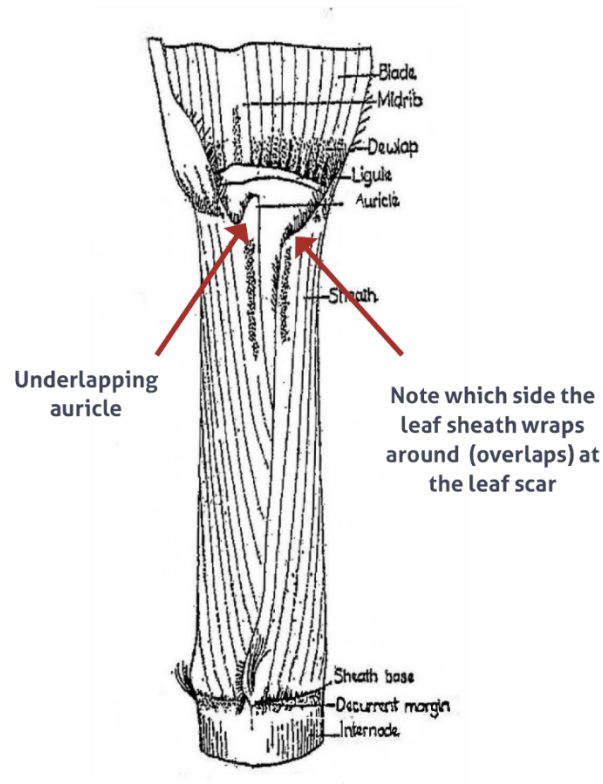
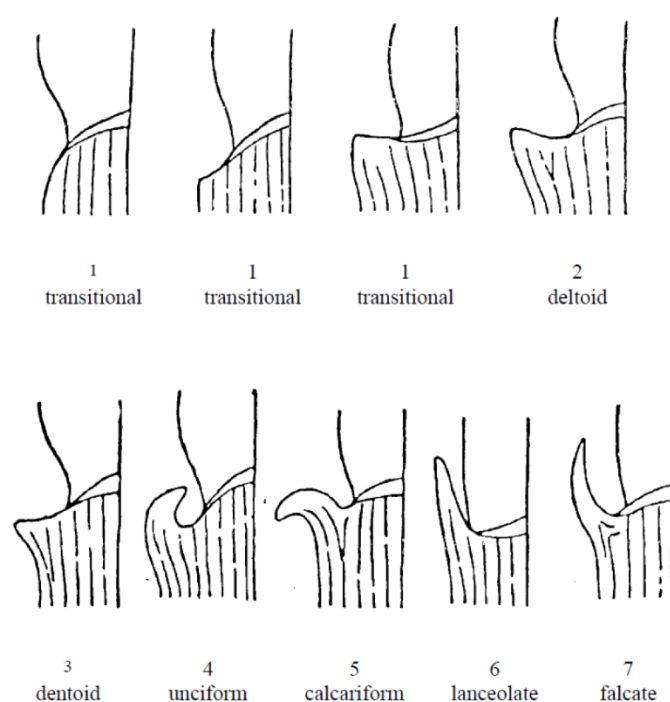
**Trashing habit:** Adherence of the leaf sheath / ease of removing trash: free (self-trashing); loose (trash loosely adhered but easily removed); moderate; and tight trashing (trash clings to the stalk and is hard to remove).

**Stalk colour:** Unexposed stalk colour represents the colour where not exposed to the sun (just after leaves and trash have been removed from the internode); exposed colour is the colour where exposed to the sun (for a minimum of 3 days). Stalk colours listed here are only indicative of each variety, and should only be used as a guide as colour can vary depending on crop age (whether the crop has started to drop its trash), how open the crop is, and hence, exposure to the sun.

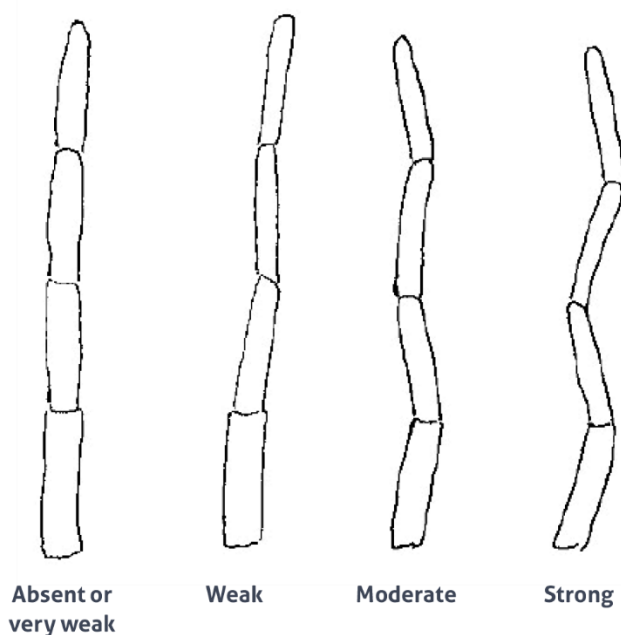
**Stalk waxiness:** All varieties have a wax cover on the internode, but descriptions here are based on the following categories: light (stalk colour highly visible); moderate (stalk colour somewhat visible); and heavy (stalk colour not visible).



**Auricle:** The auricle is an appendage of the leaf sheath located at the top of the leaf sheath margin near the dewlap. The descriptions will be for both the an underlapping side of the leaf sheath, and the overlapping side. The auricles present on one side of the stalk will consistently be the underlapping side, while the auricles present on the opposing side of the stalk will always be the overlapping side. Descriptions for the auricle include: absent, very short, short, medium, long. Most auricles described will be pointed in shape (lanceolate), unless a different shape is specified.

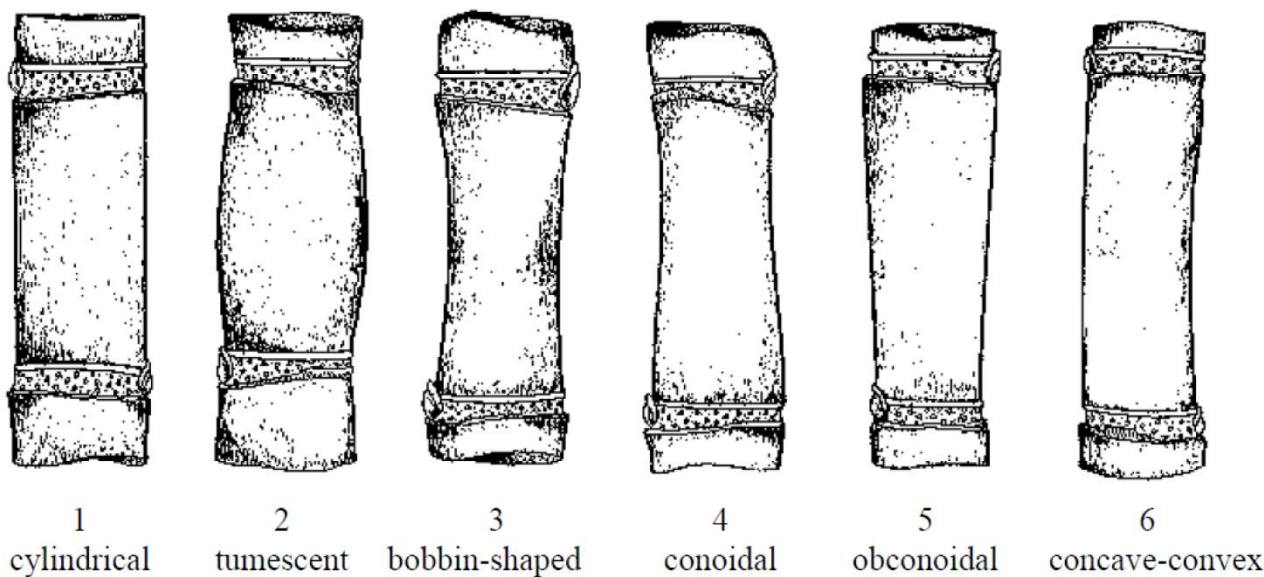
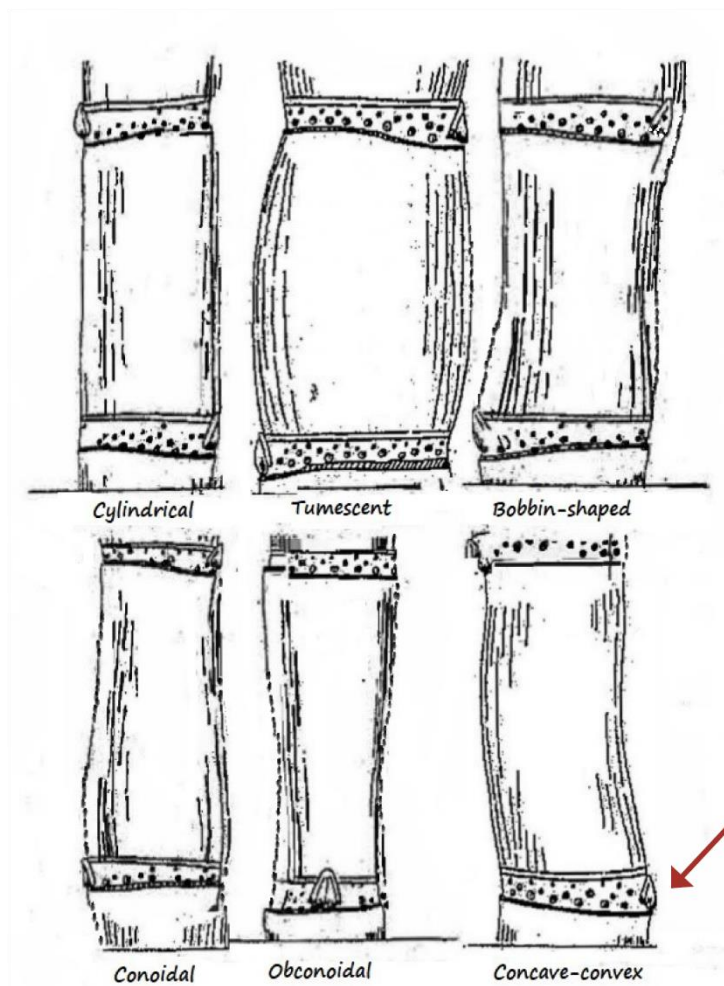


**Stalk alignment:** Expression of zig-zag alignment.



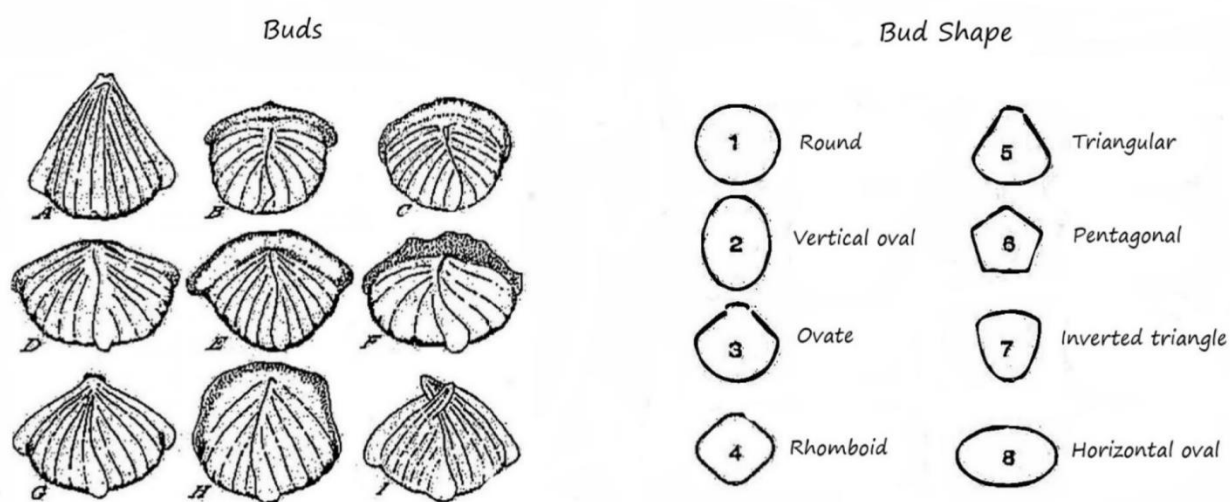
## VARIETY IDENTIFICATION DESCRIPTORS (CONTINUED)

Internode shape:

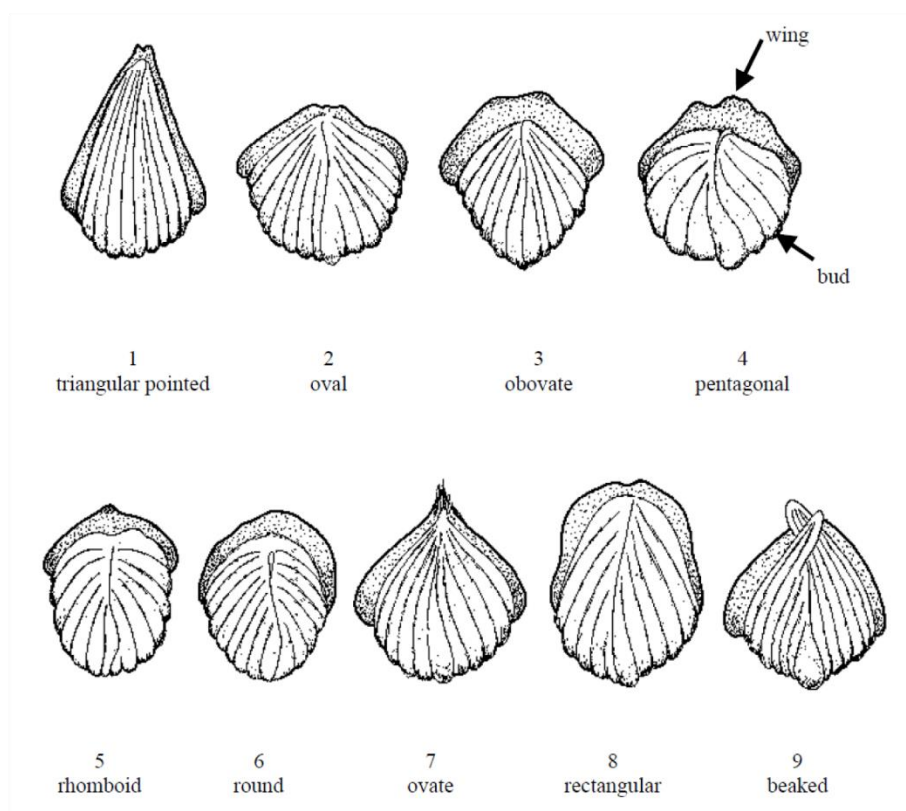




**Bud shape & prominence:** Shape of bud excluding bud wings (note, this can vary on the same stalk depending on age of bud, and whether it has started to germinate); bud prominence is how much the bud protrudes from the internode: flat; medium; very raised.



A: Triangular pointed, B: Oval, C: Obovate, D: Pentagonal  
E: Rhomboid, F: Round, G: Ovate, H: Rectangular, I: Beaked

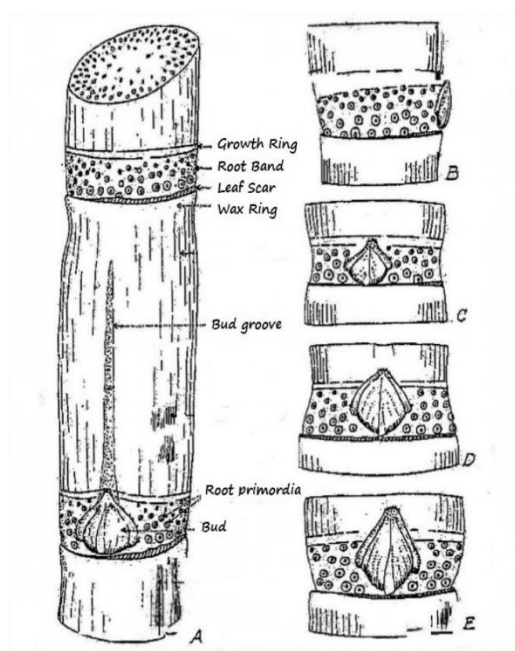
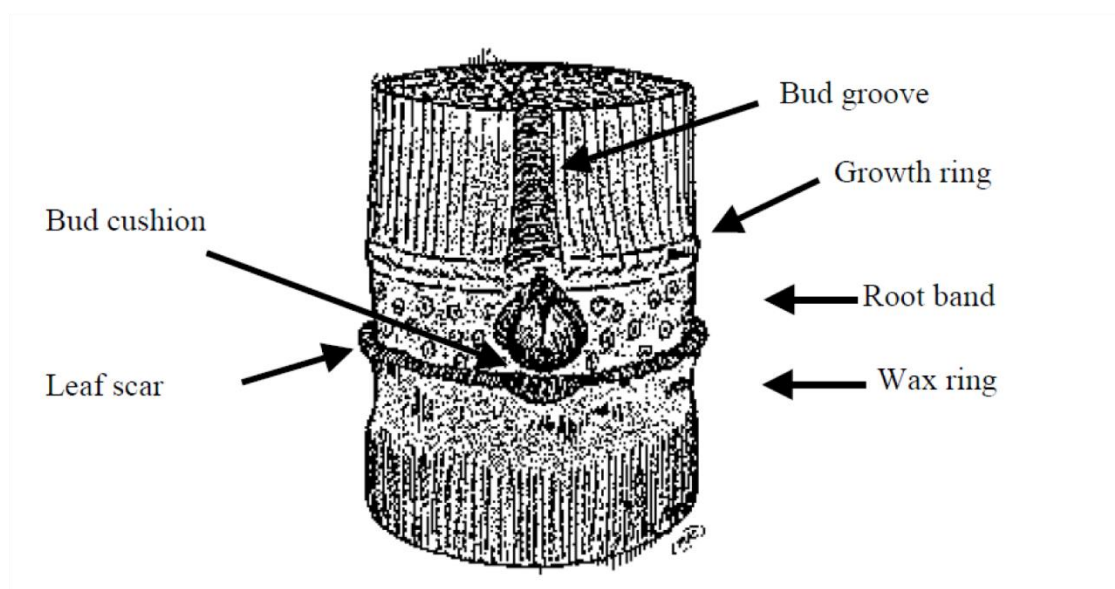


## VARIETY IDENTIFICATION DESCRIPTORS (CONTINUED)

**Bud position:** Bud cushion is the space between the base of the bud and the leaf scar; position of the bud tip (excluding the bud wings) in relation to the growth ring.

**Bud wing:** Presence and width of bud wing; the bud wing is a flange on the bud mostly on the top and/or sides of the bud.

**Bud groove:** Groove or channel for the bud to follow when it germinates; if present, the depth and length of the bud groove is described.



A. Drawing of node and internode.

B. Tall root band bud tip meets growth ring.

C. Narrow root band bud tip top of growth ring.

D. Conoidal root band bud tip above growth ring.

E. Obconoidal root band bud tip well above growth ring.

---

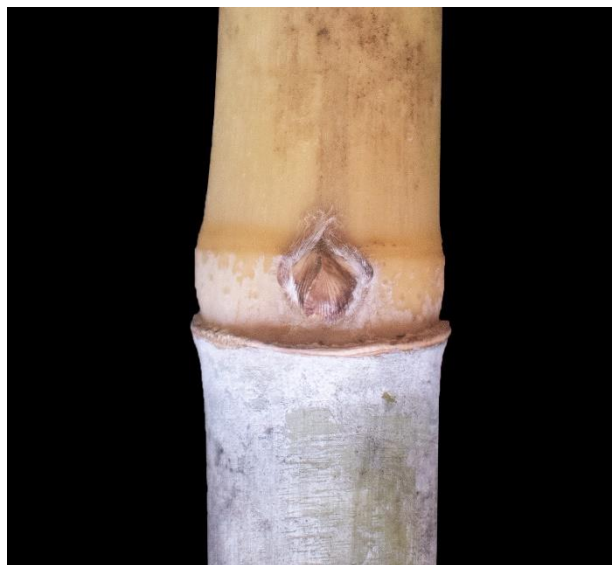
## VARIETY DESCRIPTIONS

**GENERAL DESCRIPTION**

- Medium green coloured canopy with medium width, arched leaves
- Moderate level of flowering
- Moderate to profuse, medium or coarse hairs present on dorsal side only
- Medium stalk population and a compact/closed stool
- Can be trashy
- Medium sized wax band
- Wax band may not obvious when there is a heavy wax covering.

**YEAR RELEASED IN NORTH - 2007****Bud**

Medium sized ovate to rhomboid bud with narrow to medium bud wings. Bud tip is on or near the growth ring and bud cushion is on or above leaf scar. Short and shallow or absent bud groove.

**Auricle**

Transitional overlapping auricle.  
Small lanceolate underlapping auricle.  
Non-distinctive dewlap colour.  
Moderate to profuse medium or coarse hairs present on dorsal side only.

**Stalk**

Has a weak to moderate zigzag with moderate to tight clinging trash.  
Internodes are medium in diameter and concave-convex in shape with a moderate to heavy waxiness.

Exposed stalk is yellow-green to bronze.

Unexposed stalk is pale yellow to green.





CLONE		KQ228			
GENERAL DESCRIPTION		Can be trashy. Sometimes wax band is not obvious when heavy wax covering.			
LEAF	Colour	Pale	Mid	Dark	
	Width	Narrow	Medium	Wide	
	Flowers	Sparse	Moderate	Profuse	
	Flower shape	n/a	Shape		
SHEATH	Hairs: <i>Dorsal only</i>	Absent	Sparse	Moderate	Profuse
	Size	n/a	Short	Medium	Long
	Texture	n/a	Fine	Medium	Coarse
	Dewlap colour	Not distinctive	Other:		
AURICLE	Underlapping	Yes	No	Size (mm): <i>Small</i>	Shape: <i>Lanceolate</i>
	Overlapping	Yes	No	Size (mm):	Shape: <i>Transitional</i>
STALK	Colour (unexposed): <i>Pale yellow to green</i>				
	Colour (exposed): <i>Yellow-green to bronze</i>				
	Alignment	Straight	Zig-zag	Strength of zig-zag: <i>Weak-moderate</i>	
	Trash	Free	Loose	Moderate	Clinging / tight
INTERNODE	Diameter	Thin	Medium	Thick	
	Shape	Bobbin	Concave-convex	Conoidal	Other: <i>Cylindrical</i>
	Waxiness	Light	Moderate	Heavy	
	Wax band present	Absent / not obvious	Narrow	Medium	Broad
	Bud groove	Yes	No	Size: <i>Short</i>	Depth: <i>Absent to shallow</i>
BUD	Shape	Round	Oval	Ovate	Other: <i>Rhomboid</i>
	Size	Small	Medium	Large	
	Prominence	Flat	Medium	Very raised	
	Bud wing	Yes	No	Size: <i>Narrow-medium</i>	
		Top	Side	Other	
	Bud tip to growth ring	Clearly below	On or near	Clearly above	
	Bud cushion	On leaf scar	On or above	Clearly above	
GROWTH HABIT	Germination speed	Slow	Average	Rapid	
	Germination reliability	Poor	Average	Good	
	Speed of canopy closure	Slow	Average	Rapid	
	Stool habit	Sprawled	Open	Compact / closed	n/a
	Stalk population	Low	Medium	High	
	Mature canopy habit	Erect / straight	Curved tips	Arched	Curved at base
PRESENCE OF DISEASE AT INSPECTION	Smut	Nil	Slight	Moderate	Severe
	Yellow spot	Nil	Slight	Moderate	Severe
	Brown rust	Nil	Slight	Moderate	Severe
	Orange rust	Nil	Slight	Moderate	Severe
	Leaf sclad	Nil	Slight	Moderate	Severe
	Pokkah Boeng	Nil	Slight	Moderate	Severe
	Other	Nil	Slight	Moderate	Severe
OTHER					

## NOTES:

# KQ228<sup>®</sup>

**GENERAL DESCRIPTION**

- Pale-mid coloured canopy with medium-wide width leaves
- Mature canopy is arched
- If it flowers, it's the wrong variety
- Moderate amount of medium length and medium textured hairs on dorsal side only
- Narrow-medium sized wax band
- Open-compact/closed stool with a medium stalk population
- Purple on leaf sheath
- Short and thick internodes
- Can look orange when highly exposed.

**YEAR RELEASED IN NORTH - 2006****Bud**

Medium-large ovate bud of medium prominence. Medium sized bud wings present on side. Bud tip is on or near the growth ring and bud cushion is on or above the leaf scar. If present, bud groove is medium-long and shallow.

**Auricle**

Overlapping and underlapping auricles are transitional. Non-distinctive dewlap colour.

**Stalk**

Has a moderate zig-zag with moderately clinging trash. Internodes are thick and concave-convex shaped with a moderate waxiness.

Exposed stalk green to red-brown "blush" to orange.

Unexposed stalk is pale yellow to yellow-green.



CLONE <b>Q183</b>					
GENERAL DESCRIPTION <i>If it flowers - it's the wrong variety! Non-flowerer. Purple on leaf sheath. Short/thick internodes.</i>					
LEAF	Colour	Pale	Mid	Dark	
	Width	Narrow	Medium	Wide	
	Flowers	Sparse	Moderate	Profuse	
	Flower shape	n/a	Shape		
SHEATH	Hairs: <i>Dorsal only</i>	Absent	Sparse	Moderate	Profuse
	Size	n/a	Short	Medium	Long
	Texture	n/a	Fine	Medium	Coarse
	Dewlap colour	Not distinctive	Other:		
AURICLE	Underlapping	Yes	No	Size (mm):	Shape: <i>Transitional</i>
	Overlapping	Yes	No	Size (mm):	Shape: <i>Transitional</i>
STALK	Colour (unexposed): <i>Pale yellow to yellow-green</i>				
	Colour (exposed): <i>Green to red-brown "blush" to orange</i>				
	Alignment	Straight	Zig-zag	Strength of zig-zag: <i>Moderate-strong</i>	
	Trash	Free	Loose	Moderate	Clinging / tight
INTERNODE	Diameter	Thin	Medium	Thick	
	Shape	Bobbin	Concave-convex	Conoidal	Other
	Waxiness	Light	Moderate	Heavy	
	Wax band present	Absent / not obvious	Narrow	Medium	Broad
	Bud groove	Yes	No	Size: <i>medium-long</i>	Depth: <i>Absent-shallow</i>
BUD	Shape	Round	Oval	Ovate	Other
	Size	Small	Medium	Large	
	Prominence	Flat	Medium	Very raised	
	Bud wing	Yes	No	Size: <i>Medium</i>	
		Top	Side	Other	
	Bud tip to growth ring	Clearly below	On or near	Clearly above	
	Bud cushion	On leaf scar	On or above	Clearly above	
GROWTH HABIT	Germination speed	Slow	Average	Rapid	
	Germination reliability	Poor	Average	Good	
	Speed of canopy closure	Slow	Average	Rapid	
	Stool habit	Sprawled	Open	Compact / closed	n/a
	Stalk population	Low	Medium	High	
	Mature canopy habit	Erect / straight	Curved tips	Arched	Curved at base
PRESENCE OF DISEASE AT INSPECTION	Smut	Nil	Slight	Moderate	Severe
	Yellow spot	Nil	Slight	Moderate	Severe
	Brown rust	Nil	Slight	Moderate	Severe
	Orange rust	Nil	Slight	Moderate	Severe
	Leaf scald	Nil	Slight	Moderate	Severe
	Pokkah Boeng	Nil	Slight	Moderate	Severe
	Other	Nil	Slight	Moderate	Severe
OTHER <i>Can look orange when highly exposed.</i>					

## NOTES:

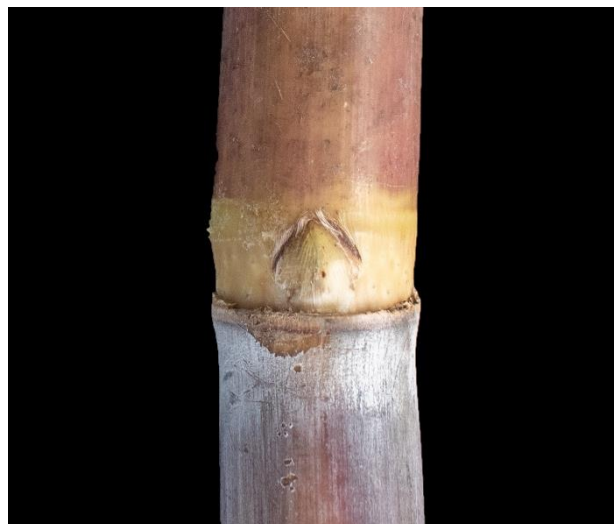
# Q183<sup>db</sup>

**GENERAL DESCRIPTION**

- Medium-dark coloured canopy with medium width leaves
- Mature canopy has curved tips
- Moderate level of flowering
- Moderate level of medium length, medium textured hairs on lateral and dorsal sides
- Medium sized wax band
- Open stool with medium-high stalk population
- Purple dewlap
- Growth cracks uncommon
- Moderate to heavy wax at top of internode, graduating to weak covering towards the bottom of internode.

**YEAR RELEASED IN NORTH - 2001****Bud**

Small-medium sized, oval-ovate bud of medium prominence. Very narrow bud wings of 1mm on the side. Bud tip is on or near the growth ring and bud cushion is on the leaf scar. Bud groove is medium-long and shallow-medium depth.

**Auricle**

Transitional overlapping auricle.  
Deltoid underlapping auricle of 2-5mm.  
Distinctive purple dewlap.

**Stalk**

Has a weak zig-zag and is free trashing. Internodes are thin-medium in diameter and conoidal shaped with a light-moderate waxiness.

Exposed stalk is red-maroon to red-brown.

Unexposed stalk is pale yellow-brown, sometimes green.





CLONE	Q200				
GENERAL DESCRIPTION	Purple dewlap. Growth cracks not common.				
LEAF	Colour	Pale	Mid	Dark	
	Width	Narrow	Medium	Wide	
	Flowers	Sparse	Moderate	Profuse	
	Flower shape	n/a	Shape		
SHEATH	Hairs: <i>Dorsal and sometimes lateral</i>	Absent	Sparse	Moderate	Profuse
	Size	n/a	Short	Medium	Long
	Texture	n/a	Fine	Medium	Coarse
	Dewlap colour	Not distinctive	Other: Purple		
AURICLE	Underlapping	Yes	No	Size (mm): 2-5mm	Shape: Deltoid
	Overlapping	Yes	No	Size (mm):	Shape: Transitional
STALK	Colour (unexposed): Pale yellow-brown; sometimes green				
	Colour (exposed): Red-maroon to red-brown				
	Alignment	Straight	Zig-zag	Strength of zig-zag: Weak	
	Trash	Free	Loose	Moderate	Clinging / tight
INTERNODE	Diameter	Thin	Medium	Thick	
	Shape	Bobbin	Concave-convex	Conoidal	Other
	Waxiness	Light	Moderate	Heavy	
	Wax band present	Absent / not obvious	Narrow	Medium	Broad
	Bud groove	Yes	No	Size: Medium-long	Depth: Shallow to medium
BUD	Shape	Round	Oval	Ovate	Other
	Size	Small	Medium	Large	
	Prominence	Flat	Medium	Very raised	
	Bud wing	Yes	No	Size: ~1mm	
		Top	Side	Other	
	Bud tip to growth ring	Clearly below	On or near	Clearly above	
	Bud cushion	On leaf scar	On or above	Clearly above	
GROWTH HABIT	Germination speed	Slow	Average	Rapid	
	Germination reliability	Poor	Average	Good	
	Speed of canopy closure	Slow	Average	Rapid	
	Stool habit	Sprawled	Open	Compact / closed	n/a
	Stalk population	Low	Medium	High	
	Mature canopy habit	Erect / straight	Curved tips	Arched	Curved at base
PRESENCE OF DISEASE AT INSPECTION	Smut	Nil	Slight	Moderate	Severe
	Yellow spot	Nil	Slight	Moderate	Severe
	Brown rust	Nil	Slight	Moderate	Severe
	Orange rust	Nil	Slight	Moderate	Severe
	Leaf scald	Nil	Slight	Moderate	Severe
	Pokkah Boeng	Nil	Slight	Moderate	Severe
	Other	Nil	Slight	Moderate	Severe
OTHER	Moderate to heavy wax at top of internode, graduating to weak covering towards the bottom of the internode.				

## NOTES:

# Q200<sup>®</sup>

**GENERAL DESCRIPTION**

- Medium coloured canopy with narrow-medium width leaves
- Mature canopy has curved tips
- Profuse flowering
- Sparse-moderate level of short, fine-medium textured hairs on dorsal side only
- Medium sized wax band
- Open stool with medium stalk population
- Bud wings are afro style
- Growth cracks can be present
- Red stripe sometimes present on leaf sheath.

**Auricle**

Small lanceolate overlapping auricle if present. Underlapping auricle is lanceolate and up to 15mm in length. Non-distinctive dewlap colour.

**Stalk**

Has a moderate zig-zag and is free trashing. Internodes are thin-medium in diameter and concave-convex to conoidal shaped with a light-moderate waxiness.

Exposed stalk is yellow-green to yellow.

Unexposed stalk is pale yellow to pale green.

**YEAR RELEASED IN NORTH - 2007****Bud**

Small-medium sized, ovate bud of medium prominence. Distinctive afro-style bud wings of 2-3mm on the top and side. Bud tip is clearly below the growth ring and bud cushion is on or above the leaf scar. Bud groove is short and very-shallow to shallow.



CLONE						Q208					
GENERAL DESCRIPTION						Growth cracks can be present. Red stripe sometimes present on leaf sheath.					
LEAF	Colour	Pale	Mid	Dark							
	Width	Narrow	Medium	Wide							
	Flowers	Sparse	Moderate	Profuse							
	Flower shape	n/a	Shape								
SHEATH	Hairs: Dorsal only	Absent	Sparse	Moderate	Profuse						
	Size	n/a	Short	Medium	Long						
	Texture	n/a	Fine	Medium	Coarse						
	Dewlap colour	Not distinctive	Other:								
AURICLE	Underlapping	Yes	No	Size (mm): Up to 15mm Shape: Lanceolate							
	Overlapping	Yes	No	Size (mm): Absent to sn Shape: Lanceolate							
STALK	Colour (unexposed): Pale yellow to pale green										
	Colour (exposed): Yellow-green to yellow										
	Alignment	Straight	Zig-zag	Strength of zig-zag: Moderate							
	Trash	Free	Loose	Moderate	Clinging / tight						
INTERNODE	Diameter	Thin	Medium	Thick							
	Shape	Bobbin	Concave-convex	Conoidal	Other						
	Waxiness	Light	Moderate	Heavy							
	Wax band present	Absent / not obvious	Narrow	Medium	Broad						
	Bud groove	Yes	No	Size: Short	Depth: Very shallow to shallow						
BUD	Shape	Round	Oval	Ovate	Other						
	Size	Small	Medium	Large							
	Prominence	Flat	Medium	Very raised							
	Bud wing	Yes	No	Size: 2-3mm							
		Top	Side	Other: Afro-style							
	Bud tip to growth ring	Clearly below	On or near	Clearly above							
	Bud cushion	On leaf scar	On or above	Clearly above							
GROWTH HABIT	Germination speed	Slow	Average	Rapid							
	Germination reliability	Poor	Average	Good							
	Speed of canopy closure	Slow	Average	Rapid							
	Stool habit	Sprawled	Open	Compact / closed	n/a						
	Stalk population	Low	Medium	High							
	Mature canopy habit	Erect / straight	Curved tips	Arched	Curved at base						
PRESENCE OF DISEASE AT INSPECTION	Smut	Nil	Slight	Moderate	Severe						
	Yellow spot	Nil	Slight	Moderate	Severe						
	Brown rust	Nil	Slight	Moderate	Severe						
	Orange rust	Nil	Slight	Moderate	Severe						
	Leaf sclad	Nil	Slight	Moderate	Severe						
	Pokkah Boeng	Nil	Slight	Moderate	Severe						
	Other	Nil	Slight	Moderate	Severe						
OTHER	Bud wings afro style.										

## NOTES:

# Q208<sup>®</sup>

**GENERAL DESCRIPTION**

- Medium coloured canopy with medium width leaves
- Canopy has a mullet, spiky up top, arched/droopy down the bottom
- Sparse-moderate flowering
- Sparse-moderate level of short, fine textured hairs on dorsal side only
- Narrow-medium sized wax band
- Compact/closed stool with medium stalk population
- Trash not easily removed
- Leaf can sometimes look narrow as it tends to curl
- Wax band sometimes not obvious due to heavy wax covering.

**Auricle**

Lanceolate overlapping auricle of <5mm.

Underlapping auricle is lanceolate and >50mm in length.

Non-distinctive dewlap colour.

**Stalk**

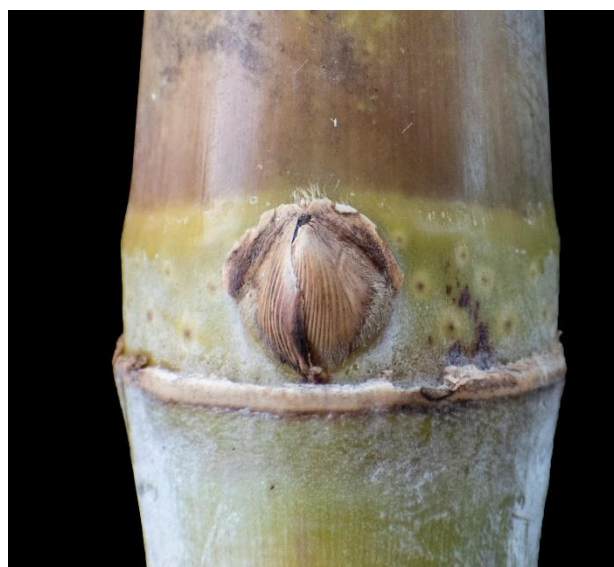
Has a strong zig-zag and has moderate-tightly clinging trash. Internodes are thin-medium in diameter and bobbin shaped with a moderate-heavy waxiness.

Exposed stalk is yellow-green to green.

Unexposed stalk is pale yellow to pale green.

**YEAR RELEASED IN NORTH - 2006****Bud**

Medium-large sized, ovate bud and medium-very raised. Bud wings of 1-2mm on the side. Bud tip is clearly below or on or near the growth ring and bud cushion is on or above the leaf scar. Bud groove is absent to very-shallow.





CLONE						Q231					
GENERAL DESCRIPTION						Trash not easily removed. Leaf can soemtimes look narrow because it tends to curl closed.					
LEAF						Colour	Pale	Mid	Dark		
						Width	Narrow	Medium	Wide		
						Flowers	Sparse	Moderate	Profuse		
						Flower shape	n/a	Shape			
SHEATH						Hairs: <i>Dorsal only</i>	Absent	Sparse	Moderate	Profuse	
						Size	n/a	Short	Medium	Long	
						Texture	n/a	Fine	Medium	Coarse	
						Dewlap colour	Not distinctive	Other:			
AURICLE						Underlapping	Yes	No	Size (mm): >50mm	Shape: Lanceolate	
						Overlapping	Yes	No	Size (mm): <5mm	Shape: Lanceolate	
STALK						Colour (unexposed): <i>Pale yellow to pale green</i>					
						Colour (exposed): <i>Yellow-green to green</i>					
						Alignment	Straight	Zig-zag	Strength of zig-zag: Strong		
						Trash	Free	Loose	Moderate	Clinging / tight	
INTERNODE						Diameter	Thin	Medium	Thick		
						Shape	Bobbin	Concave-convex	Conoidal	Other	
						Waxiness	Light	Moderate	Heavy		
						Wax band present	Absent / not obvious	Narrow	Medium	Broad	
						Bud groove	Yes	No	Size:	Depth: Absent to very shallow	
BUD						Shape	Round	Oval	Ovate	Other	
						Size	Small	Medium	Large		
						Prominence	Flat	Medium	Very raised		
						Bud wing	Yes	No	Size: 1-2mm		
							Top	Side	Other		
						Bud tip to growth ring	Clearly below	On or near	Clearly above		
						Bud cushion	On leaf scar	On or above	Clearly above		
GROWTH HABIT						Germination speed	Slow	Average	Rapid		
						Germination reliability	Poor	Average	Good		
						Speed of canopy closure	Slow	Average	Rapid		
						Stool habit	Sprawled	Open	Compact / closed	n/a	
						Stalk population	Low	Medium	High		
						Mature canopy habit	Erect / straight	Curved tips	Arched	Curved at base	
PRESENCE OF DISEASE AT INSPECTION						Smut	Nil	Slight	Moderate	Severe	
						Yellow spot	Nil	Slight	Moderate	Severe	
						Brown rust	Nil	Slight	Moderate	Severe	
						Orange rust	Nil	Slight	Moderate	Severe	
						Leaf sclad	Nil	Slight	Moderate	Severe	
						Pokkah Boeng	Nil	Slight	Moderate	Severe	
						Other	Nil	Slight	Moderate	Severe	
OTHER						Canopy has a mullet - spiky up top, arched/droopy down the bottom. Wax band is sometimes not obvious due to heavy wax covering.					

## NOTES:

# Q231<sup>®</sup>

## GENERAL DESCRIPTION

- Medium-dark coloured canopy with medium width leaves
- Mature canopy has curved tips
- Profuse flowering
- Absent-sparse level of medium length, fine textured hairs on dorsal side only, if present
- Narrow-medium sized wax band
- Compact/closed stool with medium-high stalk population
- Distinctive flower - looks like a toilet brush
- Tight trashing but is easily removed
- Distinctive bud groove, often at least half, but can run the full length of the internode.

## Auricle

Transitional overlapping auricle. Small lanceolate-falcate underlapping auricle. Non-distinctive dewlap colour.



## Stalk

Has a weak zig-zag and has moderate-tightly clinging trash. Internodes are medium-thick in diameter and concave-convex shaped with a moderate waxiness.

Exposed stalk is yellow-green to green.

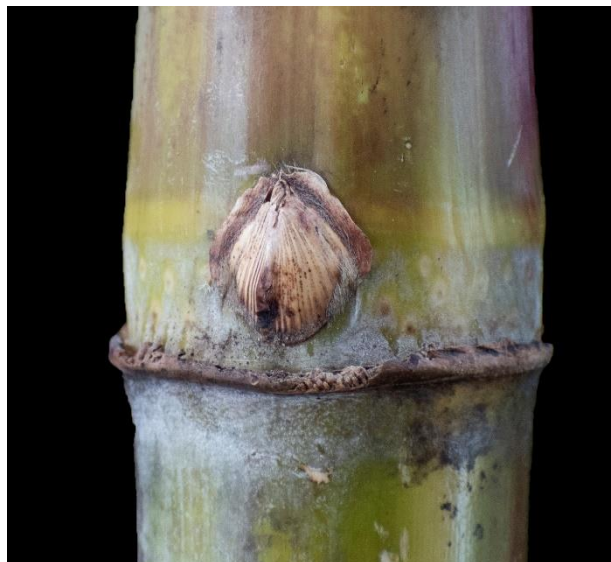
Unexposed stalk is creamy yellow to pale green.



## YEAR RELEASED IN NORTH - 2013

### Bud

Medium-large sized, ovate bud and medium-very raised. Narrow-medium bud wings on the side. Bud tip is clearly above the growth ring and bud cushion is clearly above the leaf scar. Bud groove is medium-long and medium-deep.



CLONE		Q232			
GENERAL DESCRIPTION		Distinctive flower - looks like a toilet brush. Even though it has tight trashing behaviour, it is easily removed.			
LEAF	Colour	Pale	Mid	Dark	
	Width	Narrow	Medium	Wide	
	Flowers	Sparse	Moderate	Profuse	
	Flower shape	n/a	Shape: Toilet brush		
SHEATH	Hairs: Dorsal only (if present)	Absent	Sparse	Moderate	Profuse
	Size	n/a	Short	Medium	Long
	Texture	n/a	Fine	Medium	Coarse
	Dewlap colour	Not distinctive	Other:		
AURICLE	Underlapping	Yes	No	Size (mm): Small	Shape: Lanceolate-falcate
	Overlapping	Yes	No	Size (mm):	Shape: Transitional
STALK	Colour (unexposed): Creamy yellow to pale green				
	Colour (exposed): Yellow-green to green				
	Alignment	Straight	Zig-zag	Strength of zig-zag: Weak	
	Trash	Free	Loose	Moderate	Clinging / tight
INTERNODE	Diameter	Thin	Medium	Thick	
	Shape	Bobbin	Concave-convex	Conoidal	Other
	Waxiness	Light	Moderate	Heavy	
	Wax band present	Absent / not obvious	Narrow	Medium	Broad
	Bud groove	Yes	No	Size: Medium-long	Depth: Medium to deep
BUD	Shape	Round	Oval	Ovate	Other
	Size	Small	Medium	Large	
	Prominence	Flat	Medium	Very raised	
	Bud wing	Yes	No	Size: Narrow-medium	
		Top	Side	Other	
	Bud tip to growth ring	Clearly below	On or near	Clearly above	
GROWTH HABIT	Bud cushion	On leaf scar	On or above	Clearly above	
	Germination speed	Slow	Average	Rapid	
	Germination reliability	Poor	Average	Good	
	Speed of canopy closure	Slow	Average	Rapid	
	Stool habit	Sprawled	Open	Compact / closed	n/a
	Stalk population	Low	Medium	High	
PRESENCE OF DISEASE AT INSPECTION	Mature canopy habit	Erect / straight	Curved tips	Arched	Curved at base
	Smut	Nil	Slight	Moderate	Severe
	Yellow spot	Nil	Slight	Moderate	Severe
	Brown rust	Nil	Slight	Moderate	Severe
	Orange rust	Nil	Slight	Moderate	Severe
	Leaf scald	Nil	Slight	Moderate	Severe
OTHER	Pokkah Boeng	Nil	Slight	Moderate	Severe
	Other	Nil	Slight	Moderate	Severe
OTHER		Distinctive bud groove often at least half the length of the internode, but can run the full length.			

## NOTES:

# Q232<sup>®</sup>

**GENERAL DESCRIPTION**

- Medium-dark coloured canopy with medium width leaves
- Mature canopy has curved tips
- Moderate flowering
- Profuse level of medium-long, coarse textured hairs on dorsal side and sometimes lateral side
- Medium sized wax band
- Compact/closed stool with medium stalk population
- Trashy and hairy
- Wax band may not be obvious due to heavy wax covering.

**Auricle**

Deltoid overlapping auricle. Lanceolate underlapping auricle of >5mm.  
Non-distinctive dewlap colour.

**Stalk**

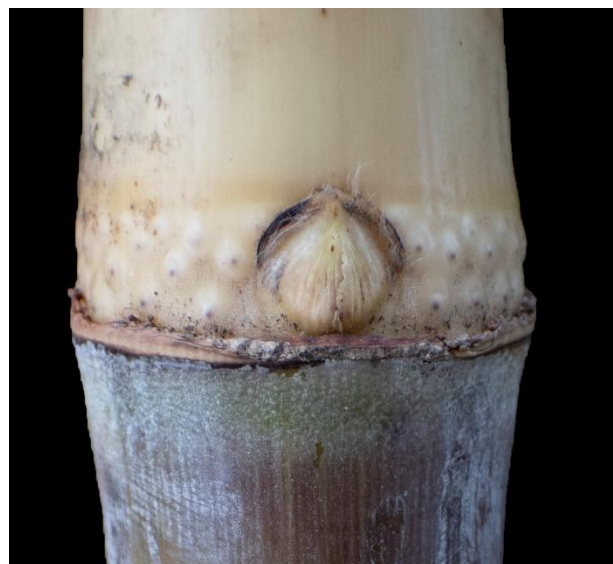
Has a weak zig-zag and has tightly clinging trash. Internodes are medium-thick in diameter and bobbin shaped with a moderate-heavy waxiness.

Exposed stalk is bronze to red-brown.

Unexposed stalk is pale green-yellow.

**YEAR RELEASED IN NORTH - 2008****Bud**

Medium-large sized, ovate bud of medium prominence. Medium-wide bud wings on the side. Bud tip is on or near or clearly above the growth ring and bud cushion is on the leaf scar. Bud groove is short and shallow if present.





CLONE <b>Q237</b>					
GENERAL DESCRIPTION <i>Trashy and hairy. Heavy wax covering meaning wax band often not obvious.</i>					
LEAF	Colour	Pale	Mid	Dark	
	Width	Narrow	Medium	Wide	
	Flowers	Sparse	Moderate	Profuse	
	Flower shape	n/a	Shape		
SHEATH	Hairs: <i>Dorsal and sometimes lateral</i>	Absent	Sparse	Moderate	Profuse
	Size	n/a	Short	Medium	Long
	Texture	n/a	Fine	Medium	Coarse
	Dewlap colour	Not distinctive	Other:		
AURICLE	Underlapping	Yes	No	Size (mm): >5mm	Shape: Lanceolate
	Overlapping	Yes	No	Size (mm):	Shape: Deltoid
STALK	Colour (unexposed): <i>Pale green-yellow</i>				
	Colour (exposed): <i>Bronze to red-brown</i>				
	Alignment	Straight	Zig-zag	Strength of zig-zag: <i>Weak</i>	
	Trash	Free	Loose	Moderate	Clinging / tight
INTERNODE	Diameter	Thin	Medium	Thick	
	Shape	Bobbin	Concave-convex	Conoidal	Other
	Waxiness	Light	Moderate	Heavy	
	Wax band present	Absent / not obvious	Narrow	Medium	Broad
	Bud groove	Yes	No	Size: <i>Short</i>	Depth: <i>Absent to shallow</i>
BUD	Shape	Round	Oval	Ovate	Other
	Size	Small	Medium	Large	
	Prominence	Flat	Medium	Very raised	
	Bud wing	Yes	No	Size: <i>Medium - wide</i>	
		Top	Side	Other	
	Bud tip to growth ring	Clearly below	On or near	Clearly above	
	Bud cushion	On leaf scar	On or above	Clearly above	
GROWTH HABIT	Germination speed	Slow	Average	Rapid	
	Germination reliability	Poor	Average	Good	
	Speed of canopy closure	Slow	Average	Rapid	
	Stool habit	Sprawled	Open	Compact / closed	n/a
	Stalk population	Low	Medium	High	
	Mature canopy habit	Erect / straight	Curved tips	Arched	Curved at base
PRESENCE OF DISEASE AT INSPECTION	Smut	Nil	Slight	Moderate	Severe
	Yellow spot	Nil	Slight	Moderate	Severe
	Brown rust	Nil	Slight	Moderate	Severe
	Orange rust	Nil	Slight	Moderate	Severe
	Leaf scald	Nil	Slight	Moderate	Severe
	Pokkah Boeng	Nil	Slight	Moderate	Severe
	Other	Nil	Slight	Moderate	Severe
OTHER					

## NOTES:

# Q237<sup>®</sup>

## GENERAL DESCRIPTION

- Pale-medium coloured canopy with medium width leaves
- Mature canopy has curved tips
- Moderate flowering
- Moderate level of short-medium, coarse textured hairs on dorsal side and lateral sides
- Medium sized wax band
- Open stool with medium-high stalk population
- Red blotches or stripes can be found on leaf sheath
- Distinctive hook shaped auricle on underlapping side
- Light trashing further up the stalk
- Deep growth cracks are common.

### Auricle

Transitional overlapping auricle. Dentoid-calcariform underlapping auricle of 10-15mm. Non-distinctive dewlap colour.



### Stalk

Has a moderate zig-zag and loose-moderate clinging trash. Internodes are medium in diameter and concave-convex shaped with a light waxiness.

Exposed stalk is yellow to lime-green.

Unexposed stalk is pale yellow-green.



## YEAR RELEASED IN NORTH - 2012

### Bud

Medium sized, ovate-rhomboid bud of medium prominence. Medium sized bud wings on the side. Bud tip is on or near the growth ring and bud cushion is on or above the leaf scar. Bud groove is short-medium length and very shallow.



CLONE	Q238				
GENERAL DESCRIPTION	Red blotches or stripes can be found on leaf sheath. Distinctive hook shaped auricle on underlapping side.				
LEAF	Colour	Pale	Mid	Dark	
	Width	Narrow	Medium	Wide	
	Flowers	Sparse	Moderate	Profuse	
	Flower shape	n/a	Shape		
SHEATH	Hairs: <i>Dorsal and lateral</i>	Absent	Sparse	Moderate	Profuse
	Size	n/a	Short	Medium	Long
	Texture	n/a	Fine	Medium	Coarse
	Dewlap colour	Not distinctive	Other:		
AURICLE	Underlapping	Yes	No	Size (mm): 10-15mm	Shape: <i>Dentoid-calcariform</i>
	Overlapping	Yes	No	Size (mm):	Shape: <i>Transitional</i>
STALK	Colour (unexposed): <i>Pale yellow-green</i>				
	Colour (exposed): <i>Yellow to lime-green</i>				
	Alignment	Straight	Zig-zag	Strength of zig-zag: <i>Moderate</i>	
	Trash	Free	Loose	Moderate	Clinging / tight
INTERNODE	Diameter	Thin	Medium	Thick	
	Shape	Bobbin	Concave-convex	Conoidal	Other
	Waxiness	Light	Moderate	Heavy	
	Wax band present	Absent / not obvious	Narrow	Medium	Broad
	Bud groove	Yes	No	Size: <i>Short to medium</i>	Depth: <i>Very shallow</i>
BUD	Shape	Round	Oval	Ovate	Other: <i>Rhomboid</i>
	Size	Small	Medium	Large	
	Prominence	Flat	Medium	Very raised	
	Bud wing	Yes	No	Size: <i>Medium</i>	
		Top	Side	Other	
	Bud tip to growth ring	Clearly below	On or near	Clearly above	
	Bud cushion	On leaf scar	On or above	Clearly above	
GROWTH HABIT	Germination speed	Slow	Average	Rapid	
	Germination reliability	Poor	Average	Good	
	Speed of canopy closure	Slow	Average	Rapid	
	Stool habit	Sprawled	Open	Compact / closed	n/a
	Stalk population	Low	Medium	High	
	Mature canopy habit	Erect / straight	Curved tips	Arched	Curved at base
PRESENCE OF DISEASE AT INSPECTION	Smut	Nil	Slight	Moderate	Severe
	Yellow spot	Nil	Slight	Moderate	Severe
	Brown rust	Nil	Slight	Moderate	Severe
	Orange rust	Nil	Slight	Moderate	Severe
	Leaf sclad	Nil	Slight	Moderate	Severe
	Pokkah Boeng	Nil	Slight	Moderate	Severe
	Other	Nil	Slight	Moderate	Severe
OTHER	Light trashing further up the stalk. Deep growth cracks are common.				

## NOTES:

Q238<sup>b</sup>

**GENERAL DESCRIPTION**

- Dark coloured canopy with wide leaves
- Mature canopy is arched
- Sparse-moderate flowering
- Sparse, short, finely textured hairs on dorsal side only, if present.
- Medium-broad wax band
- Open stool with medium stalk population
- Soft looking canopy of broad dark leaves.

**YEAR RELEASED IN NORTH - 2013****Bud**

Small-medium sized, oval bud of medium prominence. Absent-narrow bud wings present. Bud tip is clearly below or on or near the growth ring and bud cushion is on or above the leaf scar. Bud groove is medium-long and shallow-medium.

**Auricle**

Small-medium lanceolate overlapping auricle. Medium-long lanceolate underlapping auricle. Dewlap colour is non-distinctive.

**Stalk**

Has a weak-moderate zig-zag and moderately clinging trash. Internodes are thick in diameter and concave-convex to cylindrical in shape with a moderate-heavy waxiness.

Exposed stalk is green to yellow to bronze or maroon.

Unexposed stalk is green to yellow.





CLONE	Q240				
GENERAL DESCRIPTION	Soft looking canopy of broad dark green leaves.				
LEAF	Colour	Pale	Mid	Dark	
	Width	Narrow	Medium	Wide	
	Flowers	Sparse	Moderate	Profuse	
	Flower shape	n/a	Shape		
SHEATH	Hairs: <i>Dorsal only (if present)</i>	Absent	Sparse	Moderate	Profuse
	Size	n/a	Short	Medium	Long
	Texture	n/a	Fine	Medium	Coarse
	Dewlap colour	Not distinctive	Other:		
AURICLE	Underlapping	Yes	No	Size (mm): <i>Medium - long</i>	Shape: <i>Lanceolate</i>
	Overlapping	Yes	No	Size (mm): <i>Small - medium</i>	Shape: <i>Lanceolate</i>
STALK	Colour (unexposed): <i>Green to yellow</i>				
	Colour (exposed): <i>Green to yellow to bronze or maroon</i>				
	Alignment	Straight	Zig-zag	Strength of zig-zag: Weak - moderate	
	Trash	Free	Loose	Moderate	Clinging / tight
INTERNODE	Diameter	Thin	Medium	Thick	
	Shape	Bobbin	Concave-convex	Conoidal	Other: <i>Cylindrical</i>
	Waxiness	Light	Moderate	Heavy	
	Wax band present	Absent / not obvious	Narrow	Medium	Broad
	Bud groove	Yes	No	Size: <i>Medium - long</i>	Depth: <i>Shallow - medium</i>
BUD	Shape	Round	Oval	Ovate	Other
	Size	Small	Medium	Large	
	Prominence	Flat	Medium	Very raised	
	Bud wing	Yes	No	Size: <i>Absent to narrow</i>	
		Top	Side	Other	
	Bud tip to growth ring	Clearly below	On or near	Clearly above	
GROWTH HABIT	Bud cushion	On leaf scar	On or above	Clearly above	
	Germination speed	Slow	Average	Rapid	
	Germination reliability	Poor	Average	Good	
	Speed of canopy closure	Slow	Average	Rapid	
	Stool habit	Sprawled	Open	Compact / closed	n/a
	Stalk population	Low	Medium	High	
PRESENCE OF DISEASE AT INSPECTION	Mature canopy habit	Erect / straight	Curved tips	Arched	Curved at base
	Smut	Nil	Slight	Moderate	Severe
	Yellow spot	Nil	Slight	Moderate	Severe
	Brown rust	Nil	Slight	Moderate	Severe
	Orange rust	Nil	Slight	Moderate	Severe
	Leaf sclad	Nil	Slight	Moderate	Severe
	Pokkah Boeng	Nil	Slight	Moderate	Severe
OTHER	Other	Nil	Slight	Moderate	Severe

## NOTES:

Q240<sup>®</sup>

**GENERAL DESCRIPTION**

- Medium-dark coloured canopy with medium width leaves
- Mature canopy has curved tips
- Sparse flowering
- Moderate amount of medium length, medium textured hairs on dorsal side.
- Narrow wax band
- Open stool with high stalk population
- Bluey-grey stalk colour (similar to SRA3<sup>Φ</sup> & Q256<sup>Φ</sup>)
- Internode thinner and longer than Q256<sup>Φ</sup>
- Can have distinctive (wax-free) green growth ring which contrasts against waxy white root band.

**Auricle**

Transitional overlapping auricle. Small deltoid underlapping auricle. Dewlap is waxy purple-brown.

**Stalk**

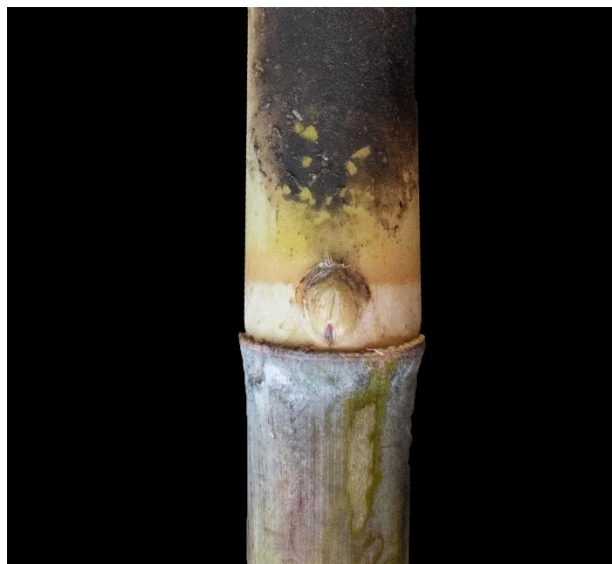
Has a weak-moderate zig-zag and loose-moderately clinging trash. Internodes are medium in diameter and concave-convex shaped with a moderate waxiness.

Exposed stalk is green (looks blue-green).

Unexposed stalk is creamy yellow to yellow-green.

**YEAR RELEASED IN NORTH - 2010****Bud**

Medium sized, medium to very raised oval bud. Medium sized bud wings on top. Bud tip is on or near the growth ring and bud cushion is on or above the leaf scar. Bud groove is absent or very shallow if present.



CLONE <b>Q241</b>					
GENERAL DESCRIPTION <i>Bluey grey-green stalk colour (similar to SRA3 &amp; Q256). Internode longer and thinner than Q256.</i>					
LEAF	Colour	Pale	Mid	Dark	
	Width	Narrow	Medium	Wide	
	Flowers	Sparse	Moderate	Profuse	
	Flower shape	n/a	Shape		
SHEATH	Hairs: <i>Dorsal only</i>	Absent	Sparse	Moderate	Profuse
	Size	n/a	Short	Medium	Long
	Texture	n/a	Fine	Medium	Coarse
	Dewlap colour	Not distinctive	Other: <i>Waxy purple - purple-brown</i>		
AURICLE	Underlapping	Yes	No	Size (mm): <i>Small</i>	Shape: <i>Deltoid</i>
	Overlapping	Yes	No	Size (mm):	Shape: <i>Transitional</i>
STALK	Colour (unexposed): <i>Creamy yellow to yellow-green</i>				
	Colour (exposed): <i>Green (looks blue-green)</i>				
	Alignment	Straight	Zig-zag	Strength of zig-zag: <i>Weak to moderate</i>	
	Trash	Free	Loose	Moderate	Clinging / tight
INTERNODE	Diameter	Thin	Medium	Thick	
	Shape	Bobbin	Concave-convex	Conoidal	Other
	Waxiness	Light	Moderate	Heavy	
	Wax band present	Absent / not obvious	Narrow	Medium	Broad
	Bud groove	Yes	No	Size:	Depth: <i>Absent or very shallow</i>
BUD	Shape	Round	Oval	Ovate	Other
	Size	Small	Medium	Large	
	Prominence	Flat	Medium	Very raised	
	Bud wing	Yes	No	Size: <i>Medium</i>	
		Top	Side	Other	
	Bud tip to growth ring	Clearly below	On or near	Clearly above	
	Bud cushion	On leaf scar	On or above	Clearly above	
GROWTH HABIT	Germination speed	Slow	Average	Rapid	
	Germination reliability	Poor	Average	Good	
	Speed of canopy closure	Slow	Average	Rapid	
	Stool habit	Sprawled	Open	Compact / closed	n/a
	Stalk population	Low	Medium	High	
	Mature canopy habit	Erect / straight	Curved tips	Arched	Curved at base
PRESENCE OF DISEASE AT INSPECTION	Smut	Nil	Slight	Moderate	Severe
	Yellow spot	Nil	Slight	Moderate	Severe
	Brown rust	Nil	Slight	Moderate	Severe
	Orange rust	Nil	Slight	Moderate	Severe
	Leaf sclad	Nil	Slight	Moderate	Severe
	Pokkah Boeng	Nil	Slight	Moderate	Severe
	Other	Nil	Slight	Moderate	Severe
OTHER <i>Can have distinctive (wax-free) green growth ring which contrasts against waxy white root band.</i>					

## NOTES:

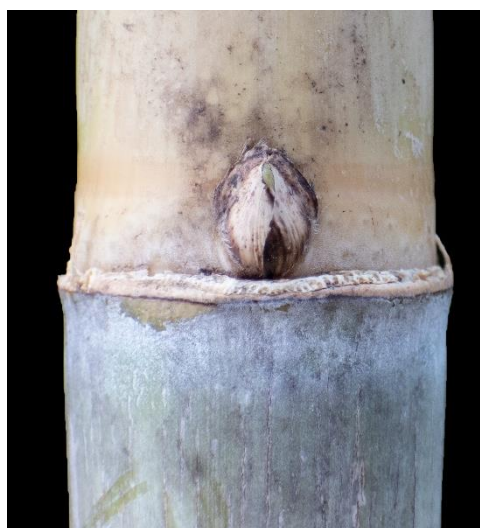
# Q241<sup>®</sup>

**GENERAL DESCRIPTION**

- Pale-medium coloured canopy with medium width leaves
- Mature canopy is arched
- Moderate-profuse flowering
- Hairs are absent-sparse, short and fine textured on dorsal side only.
- Narrow wax band
- Open stool with medium-high stalk population
- Distinctive “frilly” dewlap
- Aerial roots and growth cracks present
- Dirty looking stalks
- Flatter eyes than most varieties.

**YEAR RELEASED IN NORTH - 2015****Bud**

Small-medium sized, ovate-triangular pointed, flat bud. Narrow bud wings present. Bud tip is on or near, or clearly above the growth ring and bud cushion is on or above the leaf scar. Bud groove is short-long and shallow-medium depth.

**Auricle**

Both overlapping and underlapping auricles are transitional. Distinctive dewlap with a purple-brown “frilly” margin.

**Stalk**

Has a moderate zig-zag and moderate-tightly clinging trash. Internodes are medium in diameter and concave-convex to cylindrical in shape with a light-moderate waxiness.

Exposed stalk is mustardy-yellow.

Unexposed stalk is pale yellow to pale green (more green than yellow).





CLONE <b>Q242</b>					
GENERAL DESCRIPTION <i>Distinctive "frilly" dewlap. Aerial roots and growth cracks present. Dirty looking stalks.</i>					
LEAF	Colour	Pale	Mid	Dark	
	Width	Narrow	Medium	Wide	
	Flowers	Sparse	Moderate	Profuse	
	Flower shape	n/a	Shape		
SHEATH	Hairs: <i>Dorsal only</i>	Absent	Sparse	Moderate	Profuse
	Size	n/a	Short	Medium	Long
	Texture	n/a	Fine	Medium	Coarse
	Dewlap colour	Not distinctive	Other: <i>Brown-purple with green "frilly" margin</i>		
AURICLE	Underlapping	Yes	No	Size (mm):	Shape: <i>Transitional</i>
	Overlapping	Yes	No	Size (mm):	Shape: <i>Transitional</i>
STALK	Colour (unexposed): <i>Pale yellow to pale green (more green than yellow)</i>				
	Colour (exposed): <i>Mustardy-yellow</i>				
	Alignment	Straight	Zig-zag	Strength of zig-zag: <i>Moderate</i>	
	Trash	Free	Loose	Moderate	Clinging / tight
INTERNODE	Diameter	Thin	Medium	Thick	
	Shape	Bobbin	Concave-convex	Conoidal	Other: <i>Cylindrical</i>
	Waxiness	Light	Moderate	Heavy	
	Wax band present	Absent / not obvious	Narrow	Medium	Broad
	Bud groove	Yes	No	Size: <i>Short - long</i>	Depth: <i>Shallow to medium</i>
BUD	Shape	Round	Oval	Ovate	Other: <i>Triangular pointed</i>
	Size	Small	Medium	Large	
	Prominence	Flat	Medium	Very raised	
	Bud wing	Yes	No	Size: <i>Narrow</i>	
		Top	Side	Other	
	Bud tip to growth ring	Clearly below	On or near	Clearly above	
	Bud cushion	On leaf scar	On or above	Clearly above	
GROWTH HABIT	Germination speed	Slow	Average	Rapid	
	Germination reliability	Poor	Average	Good	
	Speed of canopy closure	Slow	Average	Rapid	
	Stool habit	Sprawled	Open	Compact / closed	n/a
	Stalk population	Low	Medium	High	
	Mature canopy habit	Erect / straight	Curved tips	Arched	Curved at base
PRESENCE OF DISEASE AT INSPECTION	Smut	Nil	Slight	Moderate	Severe
	Yellow spot	Nil	Slight	Moderate	Severe
	Brown rust	Nil	Slight	Moderate	Severe
	Orange rust	Nil	Slight	Moderate	Severe
	Leaf scald	Nil	Slight	Moderate	Severe
	Pokkah Boeng	Nil	Slight	Moderate	Severe
	Other	Nil	Slight	Moderate	Severe
OTHER <i>Flatter eyes than most varieties.</i>					

## NOTES:

# Q242<sup>®</sup>

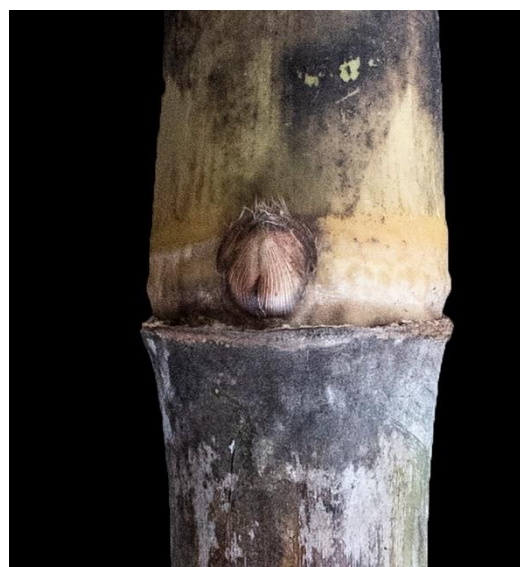
## GENERAL DESCRIPTION

- Pale-medium coloured canopy with narrow leaves
- Mature canopy has curved tips
- Moderate-profuse flowering
- Moderate-profuse, medium length, finely textured hairs on dorsal and sometimes lateral side.
- Medium sized wax band
- Open to compact/closed stool with medium-high stalk population
- Waxy leaf sheath
- Can have red/purple blotches on leaf sheath
- Very white looking root band (similar to Q253<sup>A</sup>)
- Bud has mohawk-style bud wings.

## YEAR RELEASED IN NORTH - 2015

### Bud

Medium sized, medium-very raised ovate bud. Narrow 1mm bud wings on top. Bud tip is clearly below or on or near the growth ring and bud cushion is clearly above the leaf scar. Bud groove is absent-very shallow.



### Auricle

Transitional overlapping auricle. Small lanceolate-falcate underlapping auricle. Brown dewlap.



### Stalk

Has a moderate-strong zig-zag and moderately clinging trash. Internodes are medium in diameter and concave-convex to cylindrical in shape with a moderate-heavy waxiness.

Exposed stalk green to yellow-brown to red.

Unexposed stalk is pale yellow to pale green.



CLONE <b>Q245</b>					
GENERAL DESCRIPTION <i>Waxy leaf sheath; can have red/purple blotches on leaf sheath.</i>					
LEAF	Colour	Pale	Mid	Dark	
	Width	Narrow	Medium	Wide	
	Flowers	Sparse	Moderate	Profuse	
	Flower shape	n/a	Shape		
SHEATH	Hairs: <i>Dorsal and sometimes lateral</i>	Absent	Sparse	Moderate	Profuse
	Size	n/a	Short	Medium	Long
	Texture: <i>Soft to touch</i>	n/a	Fine	Medium	Coarse
	Dewlap colour	Not distinctive	Other: <i>Brown</i>		
AURICLE	Underlapping	Yes	No	Size (mm): <i>Small</i>	Shape: <i>Lanceolate-falcate</i>
	Overlapping	Yes	No	Size (mm):	Shape: <i>Transitional</i>
STALK	Colour (unexposed): <i>Pale yellow to pale green</i>				
	Colour (exposed): <i>Green to yellow-brown to red</i>				
	Alignment	Straight	Zig-zag	Strength of zig-zag: <i>Moderate - strong</i>	
	Trash	Free	Loose	Moderate	Clinging / tight
INTERNODE	Diameter	Thin	Medium	Thick	
	Shape	Bobbin	Concave-convex	Conoidal	Other: <i>Cylindrical</i>
	Waxiness	Light	Moderate	Heavy	
	Wax band present	Absent / not obvious	Narrow	Medium	Broad
	Bud groove	Yes	No	Size:	Depth: <i>Absent to very shallow</i>
BUD	Shape	Round	Oval	Ovate	Other
	Size	Small	Medium	Large	
	Prominence	Flat	Medium	Very raised	
	Bud wing	Yes	No	Size: <i>1mm</i>	
		Top	Side	Other: <i>Mohawk</i>	
	Bud tip to growth ring	Clearly below	On or near	Clearly above	
GROWTH HABIT	Bud cushion	On leaf scar	On or above	Clearly above	
	Germination speed	Slow	Average	Rapid	
	Germination reliability	Poor	Average	Good	
	Speed of canopy closure	Slow	Average	Rapid	
	Stool habit	Sprawled	Open	Compact / closed	n/a
	Stalk population	Low	Medium	High	
PRESENCE OF DISEASE AT INSPECTION	Mature canopy habit	Erect / straight	Curved tips	Arched	Curved at base
	Smut	Nil	Slight	Moderate	Severe
	Yellow spot	Nil	Slight	Moderate	Severe
	Brown rust	Nil	Slight	Moderate	Severe
	Orange rust	Nil	Slight	Moderate	Severe
	Leaf sclad	Nil	Slight	Moderate	Severe
OTHER	Pokkah Boeng	Nil	Slight	Moderate	Severe
	Other	Nil	Slight	Moderate	Severe
OTHER <i>Very (white-looking) root band (similar to Q253). Bud has mohawk-style bud wings.</i>					

## NOTES:

# Q245<sup>Ⓟ</sup>

**GENERAL DESCRIPTION**

- Medium coloured canopy with medium width leaves
- Mature canopy has curved tips
- Sparse flowering
- Moderate-profuse, medium length, medium textured hairs on dorsal and sometimes lateral side.
- Narrow-medium sized wax band
- Sprawled to open stool with medium stalk population
- Very distinctive bud wins that look like Mickey Mouse ears on a koala face.

**YEAR RELEASED IN NORTH - 2015****Bud**

Small-medium sized, round bud of medium prominence. Bud wings of 2-3mm on side. Bud tip is clearly below the growth ring and bud cushion is on or above the leaf scar. Bud groove is absent-very shallow.

**Auricle**

Transitional overlapping auricle. Small deltoid <5mm underlapping auricle. Non-distinctive dewlap.

**Stalk**

Has a weak-moderate zig-zag and loosely clinging trash. Internodes are thin-medium in diameter and bobbin in shape with a light-moderate waxiness.

Exposed stalk is yellow-brown to bronze to red-brown.

Unexposed stalk is yellow-green to yellow-brown.





CLONE		<b>Q247</b>			
GENERAL DESCRIPTION		Very distinctice bud wings that look like Mickey Mouse on a koala face.			
LEAF	Colour	Pale	Mid	Dark	
	Width	Narrow	Medium	Wide	
	Flowers	Sparse	Moderate	Profuse	
	Flower shape	n/a	Shape		
SHEATH	Hairs: <i>Dorsal and sometimes lateral</i>	Absent	Sparse	Moderate	Profuse
	Size	n/a	Short	Medium	Long
	Texture	n/a	Fine	Medium	Coarse
	Dewlap colour	Not distinctive	Other:		
AURICLE	Underlapping	Yes	No	Size (mm): <5mm	Shape: Deltoid
	Overlapping	Yes	No	Size (mm):	Shape: Transitional
STALK	Colour (unexposed): Yellow-green to yellow-brown				
	Colour (exposed): Yellow-brown to bronze to red-brown				
	Alignment	Straight	Zig-zag	Strength of zig-zag: Weak to moderate	
	Trash	Free	Loose	Moderate	Clinging / tight
INTERNODE	Diameter	Thin	Medium	Thick	
	Shape	Bobbin	Concave-convex	Conoidal	Other
	Waxiness	Light	Moderate	Heavy	
	Wax band present	Absent / not obvious	Narrow	Medium	Broad
	Bud groove	Yes	No	Size:	Depth: Absent to very shallow
BUD	Shape	Round	Oval	Ovate	Other
	Size	Small	Medium	Large	
	Prominence	Flat	Medium	Very raised	
	Bud wing	Yes	No	Size: 2-3mm	
		Top	Side	Other: Koala on Mickey Mouse shape	
	Bud tip to growth ring	Clearly below	On or near	Clearly above	
	Bud cushion	On leaf scar	On or above	Clearly above	
GROWTH HABIT	Germination speed	Slow	Average	Rapid	
	Germination reliability	Poor	Average	Good	
	Speed of canopy closure	Slow	Average	Rapid	
	Stool habit	Sprawled	Open	Compact / closed	n/a
	Stalk population	Low	Medium	High	
	Mature canopy habit	Erect / straight	Curved tips	Arched	Curved at base
PRESENCE OF DISEASE AT INSPECTION	Smut	Nil	Slight	Moderate	Severe
	Yellow spot	Nil	Slight	Moderate	Severe
	Brown rust	Nil	Slight	Moderate	Severe
	Orange rust	Nil	Slight	Moderate	Severe
	Leaf sclad	Nil	Slight	Moderate	Severe
	Pokkah Boeng	Nil	Slight	Moderate	Severe
	Other	Nil	Slight	Moderate	Severe
OTHER					

NOTES:

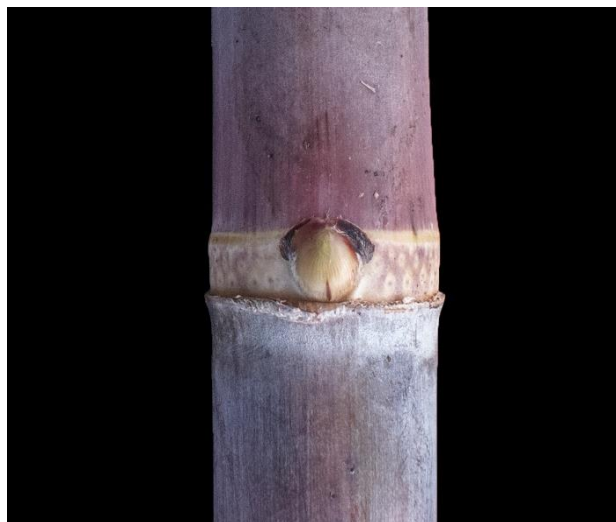
**Q247** <sup>Ⓟ</sup>

**GENERAL DESCRIPTION**

- Medium coloured canopy with medium width leaves
- Mature canopy has curved tips
- Sparse flowering
- Profuse, medium-long, coarse textured hairs on dorsal side only.
- Narrow-medium sized wax band
- Sprawled stool with medium stalk population
- No growth cracks present
- Hairy – hair is coarse like a scourer
- When unexposed the root band is creamy yellow with a distinctive yellow growth ring. Colours to same as internode when exposed.

**YEAR RELEASED IN NORTH - 2015****Bud**

Medium sized, medium to very raised, ovate bud. Medium sized bud wings on side. Bud wings look like a superman cape. Bud tip is on or near or clearly above the growth ring and bud cushion is on the leaf scar. Bud groove is very shallow-shallow.

**Auricle**

Transitional overlapping auricle. Lanceolate underlapping auricle of 5-10mm. Non-distinctive dewlap.

**Stalk**

Has a moderate zig-zag and loose-moderately clinging trash. Internodes are thin-medium in diameter and concave-convex in shape with a light-moderate waxiness.

Exposed stalk is red-brown to orange-brown.

Unexposed stalk is lighter brown-red to maroon.



CLONE						Q249					
GENERAL DESCRIPTION						No growth cracks present. HAIRY! Hair is coarse like a scourer.					
LEAF											
		Colour	Pale	Mid	Dark						
		Width	Narrow	Medium	Wide						
		Flowers	Sparse	Moderate	Profuse						
		Flower shape	n/a	Shape							
SHEATH											
		Hairs: <i>Dorsal only</i>	Absent	Sparse	Moderate	Profuse					
		Size	n/a	Short	Medium	Long					
		Texture	n/a	Fine	Medium	Coarse					
		Dewlap colour	Not distinctive	Other:							
AURICLE											
		Underlapping	Yes	No	Size (mm): 5-10mm	Shape: Lanceolate					
		Overlapping	Yes	No	Size (mm):	Shape: Transitional					
STALK											
						Colour (unexposed): <i>Lighter brown-red to maroon</i>					
						Colour (exposed): <i>Red-brown to orange-brown</i>					
		Alignment	Straight	Zig-zag	Strength of zig-zag: Moderate						
		Trash	Free	Loose	Moderate	Clinging / tight					
INTERNODE											
		Diameter	Thin	Medium	Thick						
		Shape	Bobbin	Concave-convex	Conoidal	Other					
		Waxiness	Light	Moderate	Heavy						
		Wax band present	Absent / not obvious	Narrow	Medium	Broad					
		Bud groove	Yes	No	Size: Short	Depth: Very shallow to shallow					
BUD											
		Shape	Round	Oval	Ovate	Other					
		Size	Small	Medium	Large						
		Prominence	Flat	Medium	Very raised						
		Bud wing	Yes	No	Size: Medium						
			Top	Side	Other: Looks like a superman cape						
		Bud tip to growth ring	Clearly below	On or near	Clearly above						
		Bud cushion	On leaf scar	On or above	Clearly above						
GROWTH HABIT											
		Germination speed	Slow	Average	Rapid						
		Germination reliability	Poor	Average	Good						
		Speed of canopy closure	Slow	Average	Rapid						
		Stool habit	Sprawled	Open	Compact / closed	n/a					
		Stalk population	Low	Medium	High						
		Mature canopy habit	Erect / straight	Curved tips	Arched	Curved at base					
PRESENCE OF DISEASE AT INSPECTION											
		Smut	Nil	Slight	Moderate	Severe					
		Yellow spot	Nil	Slight	Moderate	Severe					
		Brown rust	Nil	Slight	Moderate	Severe					
		Orange rust	Nil	Slight	Moderate	Severe					
		Leaf sclad	Nil	Slight	Moderate	Severe					
		Pokkah Boeng	Nil	Slight	Moderate	Severe					
		Other	Nil	Slight	Moderate	Severe					
OTHER											
						When unexposed, root band is creamy yellow with a distinctive yellow growth ring. Colours to same as internode when exposed.					

## NOTES:

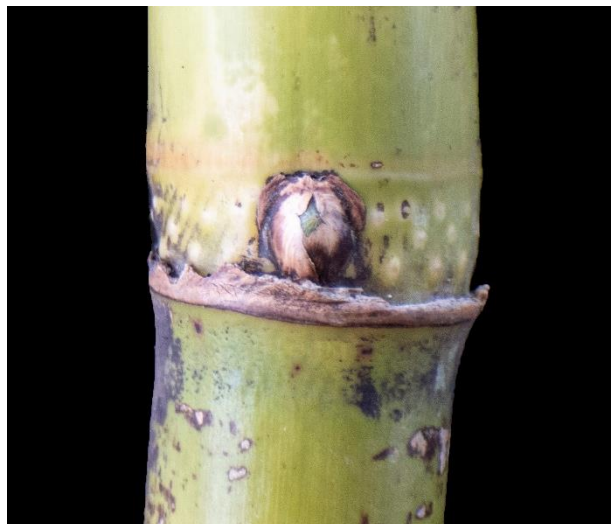
# Q249<sup>®</sup>

**GENERAL DESCRIPTION**

- Medium coloured canopy with medium-wide leaves
- Mature canopy has curved tips
- Sparse flowering
- Absent or very sparse hairs.
- Medium sized wax band
- Open stool with medium stalk population
- Waxy leaf sheath
- Brown-purple dewlap (like a bruise)
- Bud has a flat top (Fresh Prince hairstyle)
- Growth cracks are uncommon.

**YEAR RELEASED IN NORTH - 2012****Bud**

Small-medium sized, medium to very raised, round-oval bud. Bud wings of 2mm on top and side. Bud tip is clearly below the growth ring and bud cushion is clearly above the leaf scar. Bud groove is absent or very shallow.

**Auricle**

Deltoid overlapping auricle of <5mm. Lanceolate underlapping auricle of 5-8mm. Distinctive brown-purple dewlap.

**Stalk**

Has a moderate zig-zag and loose-moderately clinging trash. Internodes are medium in diameter and bobbin shaped with a light-moderate waxiness.

Exposed stalk yellow-green to green to bronze.

Unexposed stalk is pale yellow to pale yellow-green.





CLONE						Q250					
GENERAL DESCRIPTION						Waxy leaf sheath. Brown-purple dewlap (like a bruise).					
LEAF	Colour	Pale	Mid	Dark							
	Width	Narrow	Medium	Wide							
	Flowers	Sparse	Moderate	Profuse							
	Flower shape	n/a	Shape								
SHEATH	Hairs: <i>Absent to very sparse</i>	Absent	Sparse	Moderate	Profuse						
	Size	n/a	Short	Medium	Long						
	Texture	n/a	Fine	Medium	Coarse						
	Dewlap colour	Not distinctive	Other: <i>Brown-purple</i>								
AURICLE	Underlapping	Yes	No	Size (mm): <i>5-8mm</i>	Shape: <i>Lanceolate</i>						
	Overlapping	Yes	No	Size (mm): <i>&lt;5mm</i>	Shape: <i>Deltoid</i>						
STALK	Colour (unexposed): <i>Pale yellow to pale yellow-green</i>										
	Colour (exposed): <i>Yellow-green to green to bronze</i>										
	Alignment	Straight	Zig-zag	Strength of zig-zag: <i>Moderate</i>							
	Trash	Free	Loose	Moderate	Clinging / tight						
INTERNODE	Diameter	Thin	Medium	Thick							
	Shape	Bobbin	Concave-convex	Conoidal	Other						
	Waxiness	Light	Moderate	Heavy							
	Wax band present	Absent / not obvious	Narrow	Medium	Broad						
	Bud groove	Yes	No	Size: <i>Short</i>	Depth: <i>Absent or very shallow</i>						
BUD	Shape	Round	Oval	Ovate	Other						
	Size	Small	Medium	Large							
	Prominence	Flat	Medium	Very raised							
	Bud wing	Yes	No	Size: <i>2mm</i>							
		Top	Side	Other							
	Bud tip to growth ring	Clearly below	On or near	Clearly above							
	Bud cushion	On leaf scar	On or above	Clearly above							
GROWTH HABIT	Germination speed	Slow	Average	Rapid							
	Germination reliability	Poor	Average	Good							
	Speed of canopy closure	Slow	Average	Rapid							
	Stool habit	Sprawled	Open	Compact / closed	n/a						
	Stalk population	Low	Medium	High							
	Mature canopy habit	Erect / straight	Curved tips	Arched	Curved at base						
PRESENCE OF DISEASE AT INSPECTION	Smut	Nil	Slight	Moderate	Severe						
	Yellow spot	Nil	Slight	Moderate	Severe						
	Brown rust	Nil	Slight	Moderate	Severe						
	Orange rust	Nil	Slight	Moderate	Severe						
	Leaf sclad	Nil	Slight	Moderate	Severe						
	Pokkah Boeng	Nil	Slight	Moderate	Severe						
	Other	Nil	Slight	Moderate	Severe						
OTHER	Bud has a flat top ( <i>Fresh Prince hairstyle</i> ). Growth cracks are uncommon.										

## NOTES:

# Q250<sup>®</sup>

**GENERAL DESCRIPTION**

- Medium-dark coloured canopy with medium-wide leaves
- Mature canopy has curved tips
- Sparse flowering
- Profuse, short-medium length, coarse hairs on dorsal and sometimes lateral sides
- Narrow wax band
- Open stool with medium stalk population
- When the cane colours to purple-brown in the sun, the root band stands out as green in contrast in older internodes
- Growth cracks present
- Bud wings are a smaller version of Mickey Mouse ears.

**Auricle**

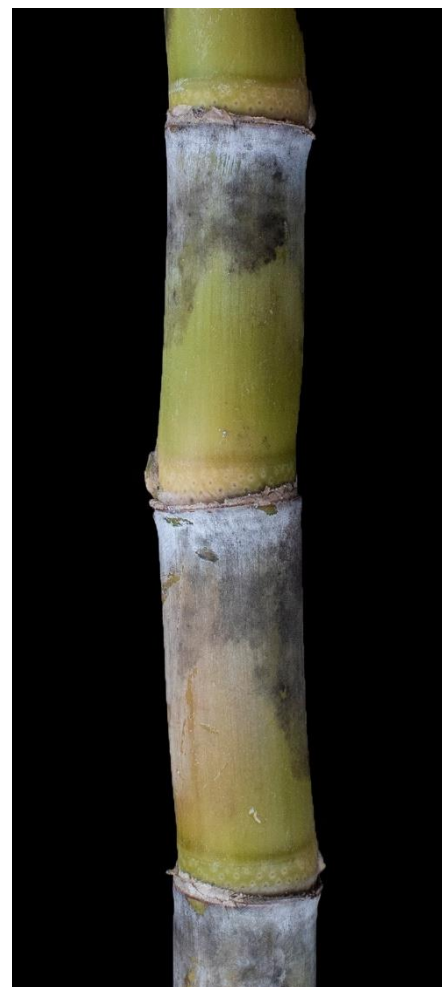
Small-medium sized deltoid overlapping auricle. Medium sized lanceolate underlapping auricle. Non-distinctive dewlap.

**Stalk**

Has a moderate-strong zig-zag and loosely clinging trash. Internodes are thick and conoidal shaped with a moderate waxiness.

Exposed stalk is purple-bronze "blush" to orange-brown/yellow-brown.

Unexposed stalk is pale yellow-green.

**YEAR RELEASED IN NORTH - 2012****Bud**

Medium sized, round-oval bud of medium prominence. Narrow-medium bud wings of on top. Bud tip is clearly below the growth ring and bud cushion is clearly above the leaf scar. Bud groove is absent or very shallow.



CLONE	Q251				
GENERAL DESCRIPTION	When colours to purple-brown in sun, root band can stand out as green in contrast in older internodes.				
LEAF	Colour	Pale	Mid	Dark	
	Width	Narrow	Medium	Wide	
	Flowers	Sparse	Moderate	Profuse	
	Flower shape	n/a	Shape		
SHEATH	Hairs: Dorsal and sometimes lateral (to touch)	Absent	Sparse	Moderate	Profuse
	Size	n/a	Short	Medium	Long
	Texture	n/a	Fine	Medium	Coarse
	Dewlap colour	Not distinctive	Other		
AURICLE	Underlapping	Yes	No	Size (mm): Medium	Shape: Lanceolate
	Overlapping	Yes	No	Size (mm): Small-medium	Shape: Deltoid
STALK	Colour (unexposed):	Pale yellow-green			
	Colour (exposed):	Purple-bronze "blush" to orange-brown/yellow-brown			
	Alignment	Straight	Zig-zag	Strength of zig-zag: Moderate - strong	
	Trash	Free	Loose	Moderate	Clinging / tight
INTERNODE	Diameter	Thin	Medium	Thick	
	Shape	Bobbin	Concave-convex	Conoidal	Other: Cylindrical
	Waxiness	Light	Moderate	Heavy	
	Wax band present	Absent / not obvious	Narrow	Medium	Broad
	Bud groove	Yes	No	Size:	Depth: Absent or very shallow
BUD	Shape	Round	Oval	Ovate	Other
	Size	Small	Medium	Large	
	Prominence	Flat	Medium	Very raised	
	Bud wing	Yes	No	Size: Narrow - medium	
		Top	Side	Other	
	Bud tip to growth ring	Clearly below	On or near	Clearly above	
	Bud cushion	On leaf scar	On or above	Clearly above	
GROWTH HABIT	Germination speed	Slow	Average	Rapid	
	Germination reliability	Poor	Average	Good	
	Speed of canopy closure	Slow	Average	Rapid	
	Stool habit	Sprawled	Open	Compact / closed	n/a
	Stalk population	Low	Medium	High	
	Mature canopy habit	Erect / straight	Curved tips	Arched	Curved at base
PRESENCE OF DISEASE AT INSPECTION	Smut	Nil	Slight	Moderate	Severe
	Yellow spot	Nil	Slight	Moderate	Severe
	Brown rust	Nil	Slight	Moderate	Severe
	Orange rust	Nil	Slight	Moderate	Severe
	Leaf scald	Nil	Slight	Moderate	Severe
	Pokkah Boeng	Nil	Slight	Moderate	Severe
	Other	Nil	Slight	Moderate	Severe
OTHER	Growth cracks present. Bud wings are smaller version of Mickey Mouse ears.				

## NOTES:

# Q251<sup>®</sup>

## GENERAL DESCRIPTION

- Pale coloured canopy with narrow-medium leaves
- Mature canopy is erect/straight
- Moderate flowering
- Sparse-moderate, medium length, fine hairs on dorsal side only
- Medium width wax band
- Sprawled-open stool with medium stalk population
- Purple coloured dewlap
- Leaf sheath can have red blotches
- Bud groove often full length of internode
- Wax band looks more prominent because of weaker wax covering of internodes
- Distinctive yellow-green growth ring.

## Auricle

Transitional overlapping auricle. Lanceolate underlapping auricle of 10-15mm. Distinctive purple dewlap.



## Stalk

Has a weak-moderate zig-zag and is free trashing. Internodes are thin-medium in diameter and bobbin shaped with a light-moderate waxiness.

Exposed stalk is yellow to yellow-brown (mustard). Can have green.

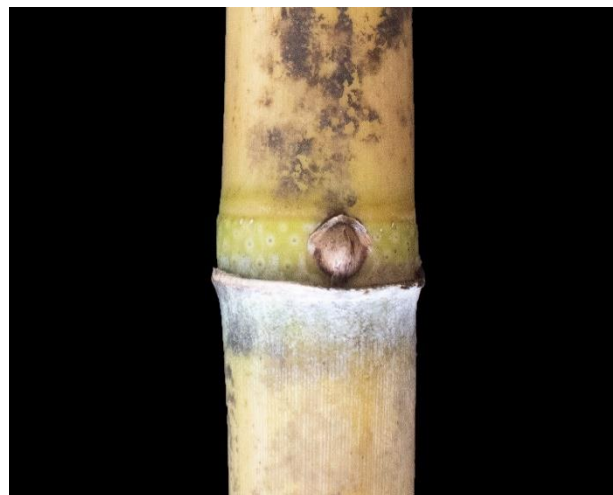
Unexposed stalk is pale yellow mostly (with some pale green).



## YEAR RELEASED IN NORTH - 2015

### Bud

Medium sized, round-ovate (mostly round) bud of light-medium prominence. Narrow bud wings on side. Bud tip is on or near the growth ring and bud cushion is on or above the leaf scar. Bud groove is medium-deep and long.





CLONE		Q252			
GENERAL DESCRIPTION		Purple dewlap in colour; leaf sheath can have red blotches. Bud groove often full length of internode.			
LEAF	Colour	Pale	Mid	Dark	
	Width	Narrow	Medium	Wide	
	Flowers	Sparse	Moderate	Profuse	
	Flower shape	n/a	Shape		
SHEATH	Hairs: <i>Dorsal only</i>	Absent	Sparse	Moderate	Profuse
	Size	n/a	Short	Medium	Long
	Texture: <i>Soft to touch</i>	n/a	Fine	Medium	Coarse
	Dewlap colour	Not distinctive	Other: Purple		
AURICLE	Underlapping	Yes	No	Size (mm): 10-15mm	Shape: Lanceolate
	Overlapping:	Yes	No	Size (mm):	Shape: Transitional
STALK	Colour (unexposed): Pale yellow mostly (with some pale green)				
	Colour (exposed): Yellow to yellow-brown (mustard). Can have green.				
	Alignment	Straight	Zig-zag	Strength of zig-zag: Weak to moderate	
	Trash	Free	Loose	Moderate	Clinging / tight
INTERNODE	Diameter	Thin	Medium	Thick	
	Shape	Bobbin	Concave-convex	Conoidal	Other
	Waxiness	Light	Moderate	Heavy	
	Wax band present	Absent / not obvious	Narrow	Medium	Broad
	Bud groove	Yes	No	Size: Medium - deep	Depth: Long
BUD	Shape	Round	Oval	Ovate	Other: Mostly round
	Size	Small	Medium	Large	
	Prominence	Flat	Medium	Very raised	
	Bud wing	Yes	No	Size: Narrow	
		Top	Side	Other	
	Bud tip to growth ring	Clearly below	On or near	Clearly above	
	Bud cushion	On leaf scar	On or above	Clearly above	
GROWTH HABIT	Germination speed	Slow	Average	Rapid	
	Germination reliability	Poor	Average	Good	
	Speed of canopy closure	Slow	Average	Rapid	
	Stool habit	Sprawled	Open	Compact / closed	n/a
	Stalk population	Low	Medium	High	
	Mature canopy habit	Erect / straight	Curved tips	Arched	Curved at base
PRESENCE OF DISEASE AT INSPECTION	Smut	Nil	Slight	Moderate	Severe
	Yellow spot	Nil	Slight	Moderate	Severe
	Brown rust	Nil	Slight	Moderate	Severe
	Orange rust	Nil	Slight	Moderate	Severe
	Leaf scld	Nil	Slight	Moderate	Severe
	Pokkah Boeng	Nil	Slight	Moderate	Severe
	Other	Nil	Slight	Moderate	Severe
OTHER		Wax band looks more prominent because of weaker wax covering of internodes; distinctive yellow-green growth ring .			

## NOTES:

# Q252<sup>®</sup>

**GENERAL DESCRIPTION**

- Medium coloured canopy with medium width leaves
- Mature canopy has curved tips
- Sparse flowering
- Moderate, short-medium, fine hairs on dorsal side only
- Medium width wax band
- Open stool with medium-high stalk population
- Waxy root band (white in colour)
- Sparse flowering but can produce the odd flower
- Shallow growth cracks are common
- Bud groove often up to half the length of the internode.

**Auricle**

Lanceolate overlapping auricle of <5mm. Lanceolate underlapping auricle of 5-10mm. Yellow-brown dewlap.

**Stalk**

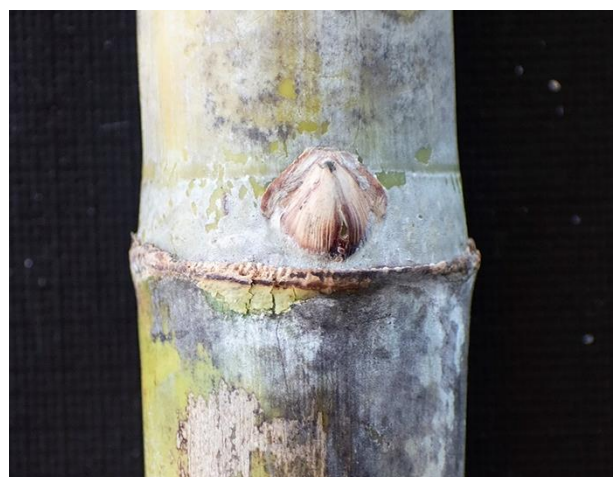
Has a moderate zig-zag and is loose trashing. Internodes are medium-thick in diameter and concave-convex shaped with a moderate waxiness.

Exposed stalk is yellow-green to green.

Unexposed stalk is pale yellow to green.

**YEAR RELEASED IN NORTH - 2015****Bud**

Medium sized, ovate-rhomboid bud of medium prominence. Narrow bud wings of 1-2mm on top and side. Bud tip is on or near the growth ring and bud cushion is on or above the leaf scar. Bud groove is shallow to medium and generally medium in length, though can run up to half the length of the internode.



CLONE <b>Q253</b>					
GENERAL DESCRIPTION <i>Waxy root band (white in colour). Sparse flowering (but can produce the odd flower).</i>					
LEAF	Colour	Pale	Mid	Dark	
	Width	Narrow	Medium	Wide	
	Flowers	Sparse	Moderate	Profuse	
	Flower shape	n/a	Shape		
SHEATH	Hairs: <i>Dorsal only</i>	Absent	Sparse	Moderate	Profuse
	Size	n/a	Short	Medium	Long
	Texture	n/a	Fine	Medium	Coarse
	Dewlap colour	Not distinctive	Other: <i>Yellow-brown</i>		
AURICLE	Underlapping	Yes	No	Size (mm): 5-10mm	Shape: <i>Lanceolate</i>
	Overlapping	Yes	No	Size (mm): <5mm	Shape: <i>Lanceolate</i>
STALK	Colour (unexposed): <i>Pale yellow to green</i>				
	Colour (exposed): <i>Yellow-green to green</i>				
	Alignment	Straight	Zig-zag	Strength of zig-zag: <i>Moderate</i>	
	Trash	Free	Loose	Moderate	Clinging / tight
INTERNODE	Diameter	Thin	Medium	Thick	
	Shape	Bobbin	Concave-convex	Conoidal	Other
	Waxiness	Light	Moderate	Heavy	
	Wax band present	Absent / not obvious	Narrow	Medium	Broad
	Bud groove	Yes	No	Size: <i>Medium</i>	Depth: <i>Shallow to medium</i>
BUD	Shape	Round	Oval	Ovate	Other: <i>Rhomboid</i>
	Size	Small	Medium	Large	
	Prominence	Flat	Medium	Very raised	
	Bud wing	Yes	No	Size: 1-2mm	
		Top	Side	Other	
	Bud tip to growth ring	Clearly below	On or near	Clearly above	
	Bud cushion	On leaf scar	On or above	Clearly above	
GROWTH HABIT	Germination speed	Slow	Average	Rapid	
	Germination reliability	Poor	Average	Good	
	Speed of canopy closure	Slow	Average	Rapid	
	Stool habit	Sprawled	Open	Compact / closed	n/a
	Stalk population	Low	Medium	High	
	Mature canopy habit	Erect / straight	Curved tips	Arched	Curved at base
PRESENCE OF DISEASE AT INSPECTION	Smut	Nil	Slight	Moderate	Severe
	Yellow spot	Nil	Slight	Moderate	Severe
	Brown rust	Nil	Slight	Moderate	Severe
	Orange rust	Nil	Slight	Moderate	Severe
	Leaf sclad	Nil	Slight	Moderate	Severe
	Pokkah Boeng	Nil	Slight	Moderate	Severe
	Other	Nil	Slight	Moderate	Severe
OTHER <i>Growth cracks are common, shallow in depth. Bud groove often up to half the length of the internode.</i>					

## NOTES:

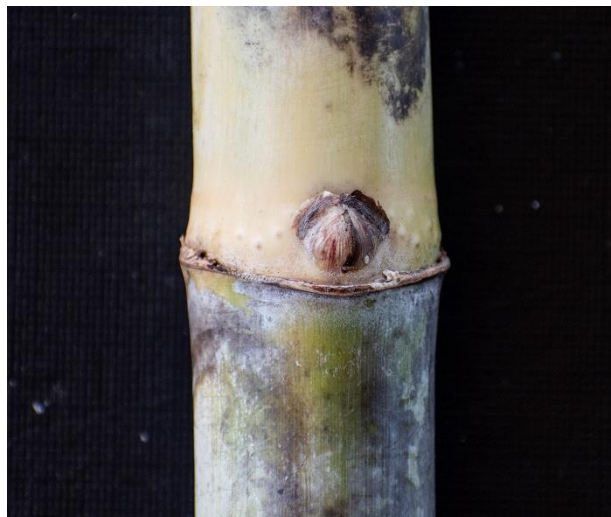
# Q253<sup>Φ</sup>

**GENERAL DESCRIPTION**

- Medium-dark coloured canopy with narrow-medium width leaves
- Mature canopy is erect/straight
- Sparse-moderate flowering
- Profuse, short-medium, fine hairs on lateral and dorsal sides
- Medium width wax band
- Open stool with high stalk population
- Growth cracks present
- Bluey-green stalk similar to SRA3<sup>A</sup>
- Wax band not as obvious due to waxier internodes.

**YEAR RELEASED IN NORTH - 2013****Bud**

Small-medium sized, round-oval bud of medium prominence. Medium sized bud wings on top and side. Bud tip is clearly below the growth ring and bud cushion is on the leaf scar. Bud groove is absent-very shallow.

**Auricle**

Transitional overlapping auricle.  
Falcate underlapping auricle of 10-15mm. Non-distinctive dewlap.

**Stalk**

Has a weak-moderate zig-zag and is loose-moderately trashing.  
Internodes are medium in diameter and concave-convex shaped with a moderate waxiness.

Exposed stalk is yellow-green to green.

Unexposed stalk is yellow-green.





CLONE <b>Q256</b>					
GENERAL DESCRIPTION <i>Growth cracks present. Colour similar to SRA3 (bluey grey-green).</i>					
LEAF	Colour	Pale	Mid	Dark	
	Width	Narrow	Medium	Wide	
	Flowers	Sparse	Moderate	Profuse	
	Flower shape	n/a	Shape		
SHEATH	Hairs: <i>Dorsal and lateral</i>	Absent	Sparse	Moderate	Profuse
	Size	n/a	Short	Medium	Long
	Texture	n/a	Fine	Medium	Coarse
	Dewlap colour	Not distinctive	Other		
AURICLE	Underlapping	Yes	No	Size (mm): 10-15mm	Shape: <i>Falcate</i>
	Overlapping	Yes	No	Size (mm):	Shape: <i>Transitional</i>
STALK	Colour (unexposed): <i>Yellow-green</i>				
	Colour (exposed): <i>Yellow-green to green</i>				
	Alignment	Straight	Zig-zag	Strength of zig-zag: <i>Weak - moderate</i>	
	Trash	Free	Loose	Moderate	Clinging / tight
INTERNODE	Diameter	Thin	Medium	Thick	
	Shape	Bobbin	Concave-convex	Conoidal	Other
	Waxiness	Light	Moderate	Heavy	
	Wax band present	Absent / not obvious	Narrow	Medium	Broad
	Bud groove	Yes	No	Size:	Depth: <i>Absent or very shallow</i>
BUD	Shape	Round	Oval	Ovate	Other
	Size	Small	Medium	Large	
	Prominence	Flat	Medium	Very raised	
	Bud wing	Yes	No	Size: <i>Medium</i>	
		Top	Side	Other: <i>"Frisly" afro style bud wings</i>	
	Bud tip to growth ring	Clearly below	On or near	Clearly above	
GROWTH HABIT	Bud cushion	On leaf scar	On or above	Clearly above	
	Germination speed	Slow	Average	Rapid	
	Germination reliability	Poor	Average	Good	
	Speed of canopy closure	Slow	Average	Rapid	
	Stool habit	Sprawled	Open	Compact / closed	n/a
	Stalk population	Low	Medium	High	
PRESENCE OF DISEASE AT INSPECTION	Mature canopy habit	Erect / straight	Curved tips	Arched	Curved at base
	Smut	Nil	Slight	Moderate	Severe
	Yellow spot	Nil	Slight	Moderate	Severe
	Brown rust	Nil	Slight	Moderate	Severe
	Orange rust	Nil	Slight	Moderate	Severe
	Leaf sclad	Nil	Slight	Moderate	Severe
	Pokkah Boeng	Nil	Slight	Moderate	Severe
OTHER	Other	Nil	Slight	Moderate	Severe
	<i>Wax band not as obvious due to waxier internodes.</i>				

## NOTES:

# Q256<sup>®</sup>

**GENERAL DESCRIPTION**

- Medium green coloured canopy with medium width leaves
- Mature canopy has curved tips
- Sparse level of flowering
- Sparse to moderate, short to medium, coarse hairs on the dorsal and sometimes lateral side
- Medium-high stalk population and a sprawled stool
- Medium sized wax band
- Can have a waxy root band
- Doesn't often flower, especially when sprawled
- Can look orange in colour when highly exposed.

**Auricle**

Transitional overlapping auricle. Small dentoid-lanceolate underlapping auricle. Non-distinctive dewlap colour.

**Stalk**

Has a weak zig-zag with loose trash. Internodes are medium in diameter and conoidal in shape with a light-moderate waxiness.

Exposed stalk is light maroon with "blush" to orange-brown to orange.

Unexposed stalk is pale yellow to green.

**YEAR RELEASED IN NORTH - 2016****Bud**

Small round to ovate bud with narrow bud wings. Bud tip is clearly below growth ring and bud cushion clearly above the leaf scar. Bud groove is not present or very shallow.



CLONE						SRA1					
GENERAL DESCRIPTION						Can have a waxy root band. Doesn't often flower, especially when sprawled.					
LEAF											
		Colour	Pale	Mid	Dark						
		Width	Narrow	Medium	Wide						
		Flowers	Sparse	Moderate	Profuse						
		Flower shape	n/a	Shape							
SHEATH											
		Hairs: <i>Dorsal and sometimes lateral</i>	Absent	Sparse	Moderate	Profuse					
		Size	n/a	Short	Medium	Long					
		Texture	n/a	Fine	Medium	Coarse					
		Dewlap colour	Not distinctive	Other							
AURICLE											
		Underlapping	Yes	No	Size (mm): <i>Small</i>	Shape: <i>Dentoid-lanceolate</i>					
		Overlapping	Yes	No	Size (mm):	Shape: Absent to very small					
STALK											
		Colour (unexposed): <i>Pale yellow to green</i>									
		Colour (exposed): <i>Light maroon "blush" to orange-brown to orange</i>									
		Alignment	Straight	Zig-zag	Strength of zig-zag: <i>Very weak</i>						
		Trash	Free	Loose	Moderate	Clinging / tight					
INTERNODE											
		Diameter	Thin	Medium	Thick						
		Shape	Bobbin	Concave-convex	Conoidal	Other					
		Waxiness	Light	Moderate	Heavy						
		Wax band present	Absent / not obvious	Narrow	Medium	Broad					
		Bud groove	Yes	No	Size:	Depth: <i>Absent to very shallow</i>					
BUD											
		Shape	Round	Oval	Ovate	Other					
		Size	Small	Medium	Large						
		Prominence	Flat	Medium	Very raised						
		Bud wing	Yes	No	Size: <i>Narrow</i>						
			Top	Side	Other						
		Bud tip to growth ring	Clearly below	On or near	Clearly above						
		Bud cushion	On leaf scar	On or above	Clearly above						
GROWTH HABIT											
		Germination speed	Slow	Average	Rapid						
		Germination reliability	Poor	Average	Good						
		Speed of canopy closure	Slow	Average	Rapid						
		Stool habit	Sprawled	Open	Compact / closed	n/a					
		Stalk population	Low	Medium	High						
		Mature canopy habit	Erect / straight	Curved tips	Arched	Curved at base					
PRESENCE OF DISEASE AT INSPECTION											
		Smut	Nil	Slight	Moderate	Severe					
		Yellow spot	Nil	Slight	Moderate	Severe					
		Brown rust	Nil	Slight	Moderate	Severe					
		Orange rust	Nil	Slight	Moderate	Severe					
		Leaf sclad	Nil	Slight	Moderate	Severe					
		Pokkah Boeng	Nil	Slight	Moderate	Severe					
		Other	Nil	Slight	Moderate	Severe					
OTHER											
		Very coarse hairs on leaf sheath. Can look orange in colour when highly exposed.									

## NOTES:

# SRA1

## GENERAL DESCRIPTION

- Medium green coloured canopy with narrow-medium width leaves
- Mature canopy has curved tips
- Sparse level of flowering
- Moderate, short and fine hairs on the dorsal side only
- High stalk population and an open stool
- Medium sized wax band
- Long internodes
- No obvious growth cracks
- Bluey- grey in appearance
- Wax band not as obvious due to waxier internode
- Smut whips common.

## Auricle

Transitional overlapping auricle. Very small lanceolate-falcate underlapping auricle. Non-distinctive dewlap colour.



## Stalk

Has a moderate-strong zig-zag with moderately clinging trash. Internodes are thin-medium in diameter and bobbin in shape with a moderate waxiness.

Exposed stalk is green to bronze-green.

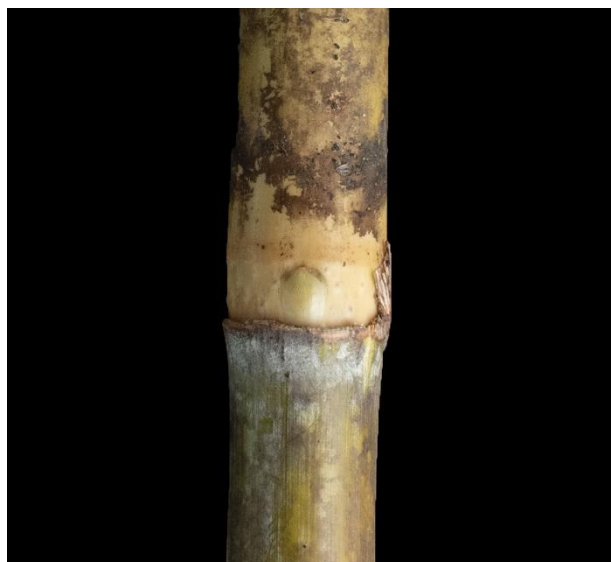
Unexposed stalk is pale yellow to green.



## YEAR RELEASED IN NORTH - 2016

## Bud

Small oval bud with medium bud wings on top with and afro shape. Bud is flat-medium prominence. Bud tip is clearly below growth ring and bud cushion is on the leaf scar.





<b>CLONE</b> <span style="font-size: 1.5em; font-weight: bold;">SRA3</span>					
<b>GENERAL DESCRIPTION</b> <i>Long internodes. Bluey grey-green in appearance. No obvious growth cracks.</i>					
<b>LEAF</b>	Colour	Pale	Mid	Dark	
	Width	Narrow	Medium	Wide	
	Flowers	Sparse	Moderate	Profuse	
	Flower shape	n/a	Shape		
<b>SHEATH</b>	Hairs: <i>Dorsal only</i>	Absent	Sparse	Moderate	Profuse
	Size	n/a	Short	Medium	Long
	Texture	n/a	Fine	Medium	Coarse
	Dewlap colour	Not distinctive	Other		
<b>AURICLE</b>	Underlapping	Yes	No	Size (mm): <i>Very small</i>	Shape: <i>Lanceolate-falcate</i>
	Overlapping	Yes	No	Size (mm):	Shape: <i>Transitional</i>
<b>STALK</b>	Colour (unexposed): <i>Pale yellow to green</i>				
	Colour (exposed): <i>Green to bronze-green</i>				
	Alignment	Straight	Zig-zag	Strength of zig-zag: <i>Moderate to strong</i>	
	Trash	Free	Loose	Moderate	Clinging / tight
<b>INTERNODE</b>	Diameter	Thin	Medium	Thick	
	Shape	Bobbin	Concave-convex	Conoidal	Other
	Waxiness	Light	Moderate	Heavy	
	Wax band present	Absent / not obvious	Narrow	Medium	Broad
	Bud groove	Yes	No	Size:	Depth: <i>Absent to very shallow</i>
<b>BUD</b>	Shape	Round	Oval	Ovate	Other
	Size	Small	Medium	Large	
	Prominence	Flat	Medium	Very raised	
	Bud wing	Yes	No	Size: <i>Medium</i>	
		Top	Side	Other: <i>Afro</i>	
	Bud tip to growth ring	Clearly below	On or near	Clearly above	
	Bud cushion	On leaf scar	On or above	Clearly above	
<b>GROWTH HABIT</b>	Germination speed	Slow	Average	Rapid	
	Germination reliability	Poor	Average	Good	
	Speed of canopy closure	Slow	Average	Rapid	
	Stool habit	Sprawled	Open	Compact / closed	n/a
	Stalk population	Low	Medium	High	
	Mature canopy habit	Erect / straight	Curved tips	Arched	Curved at base
<b>PRESENCE OF DISEASE AT INSPECTION</b>	Smut	Nil	Slight	Moderate	Severe
	Yellow spot	Nil	Slight	Moderate	Severe
	Brown rust	Nil	Slight	Moderate	Severe
	Orange rust	Nil	Slight	Moderate	Severe
	Leaf scald	Nil	Slight	Moderate	Severe
	Pokkah Boeng	Nil	Slight	Moderate	Severe
	Other	Nil	Slight	Moderate	Severe
<b>OTHER</b> <i>Wax band not as obvious due to waxier internode. Smut whips common.</i>					

## NOTES:

# SRA3<sup>®</sup>

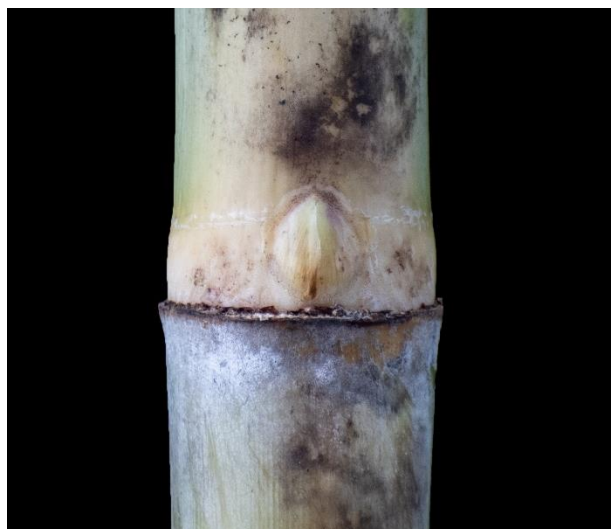
### GENERAL DESCRIPTION

- Medium green coloured canopy with medium-wide leaves
- Mature canopy is erect or spiky
- Sparse level of flowering
- Sparse, short and fine-medium hairs on the dorsal side only, can feel but not see
- Medium stalk population and an open stool
- Narrow-medium sized wax band
- Waxy leaf sheath
- Tight trashing
- Yellow-brown dewlap
- No obvious auricles on over or underlapping sides of sheath
- More yellow than SRA7<sup>Φ</sup>.

### YEAR RELEASED IN NORTH - 2016

#### Bud

Medium-large ovate bud with narrow 1-2mm bud wings on the side. Bud is medium prominence. Bud tip is on or near/clearly above the growth ring and bud cushion is on or above the leaf scar.



#### Auricle

Overlapping and underlapping auricles are transitional. Yellow-brown dewlap colour.



#### Stalk

Has a weak zig-zag with tight clinging trash. Internodes are medium in diameter and concave-convex in shape with a moderate-heavy waxiness.

Exposed stalk is green-yellow to yellow-green to bronze.

Unexposed stalk is pale yellow to slight pale green.



CLONE		SRA6			
GENERAL DESCRIPTION		Waxy leaf sheath, tight trashing. Yellow-brown dewlap			
LEAF	Colour	Pale	Mid	Dark	
	Width	Narrow	Medium	Wide	
	Flowers	Sparse	Moderate	Profuse	
	Flower shape	n/a	Shape		
SHEATH	Hairs: <i>Dorsal only</i>	Absent	Sparse	Moderate	Profuse
	Size	n/a	Short	Medium	Long
	Texture: <i>Can feel but can't see</i>	n/a	Fine	Medium	Coarse
	Dewlap colour	Not distinctive	Other	Yellow-brown	
AURICLE	Underlapping	Yes	No	Size (mm):	Shape: <i>Transitional</i>
	Overlapping	Yes	No	Size (mm):	Shape: <i>Transitional</i>
STALK	Colour (unexposed): <i>Pale yellow to slight pale green</i>				
	Colour (exposed): <i>Green-yellow to yellow-green to bronze</i>				
	Alignment	Straight	Zig-zag	Strength of zig-zag: <i>Weak</i>	
	Trash	Free	Loose	Moderate	Clinging / tight
INTERNODE	Diameter	Thin	Medium	Thick	
	Shape	Bobbin	Concave-convex	Conoidal	Other
	Waxiness	Light	Moderate	Heavy	
	Wax band present	Absent / not obvious	Narrow	Medium	Broad
	Bud groove	Yes	No	Size: <i>Short-med</i>	Depth: <i>Shallow</i>
BUD	Shape	Round	Oval	Ovate	Other
	Size	Small	Medium	Large	
	Prominence	Flat	Medium	Very raised	
	Bud wing: <i>Narrow</i>	Yes	No	Size: <i>~1-2mm</i>	
		Top	Side	Other	
	Bud tip to growth ring	Clearly below	On or near	Clearly above	
	Bud cushion	On leaf scar	On or above	Clearly above	
GROWTH HABIT	Germination speed	Slow	Average	Rapid	
	Germination reliability	Poor	Average	Good	
	Speed of canopy closure	Slow	Average	Rapid	
	Stool habit	Sprawled	Open	Compact / closed	n/a
	Stalk population	Low	Medium	High	
	Mature canopy habit	Erect / straight	Curved tips	Arched	Curved at base
PRESENCE OF DISEASE AT INSPECTION	Smut	Nil	Slight	Moderate	Severe
	Yellow spot	Nil	Slight	Moderate	Severe
	Brown rust	Nil	Slight	Moderate	Severe
	Orange rust	Nil	Slight	Moderate	Severe
	Leaf scald	Nil	Slight	Moderate	Severe
	Pokkah Boeng	Nil	Slight	Moderate	Severe
	Other	Nil	Slight	Moderate	Severe
OTHER	No obvious auricles on either the underlapping or overlapping sides of the leaf sheath. More yellow than SRA7.				

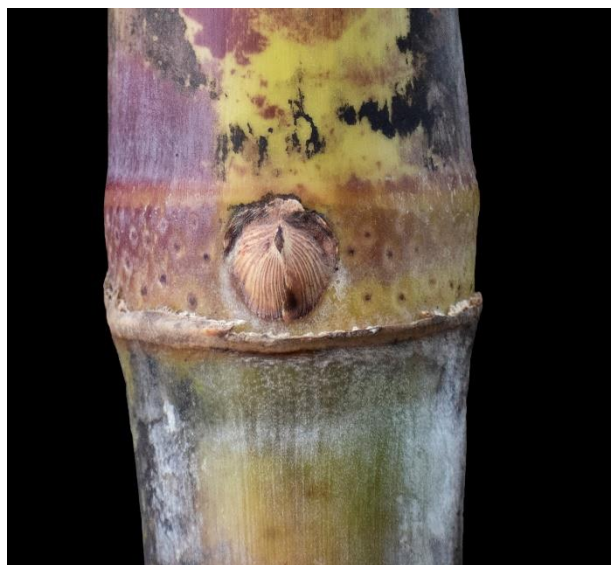
## NOTES:

**GENERAL DESCRIPTION**

- Pale coloured canopy with narrow-medium leaves
- Mature canopy has curved tips
- Sparse level of flowering
- Moderate, medium-long fine hairs on the dorsal and sometimes lateral sides
- Medium stalk population and an open stool
- Narrow-medium sized wax band
- Wax band often not obvious due to heavier wax covering on stalks
- Stalk colour can look grey
- More green than SRA6<sup>Φ</sup>.

**YEAR RELEASED IN NORTH - 2016****Bud**

Small oval bud of medium prominence. Narrow 1mm bud wings on the side. Bud tip is clearly below the growth ring and bud cushion is on or above the leaf scar.

**Auricle**

Transitional overlapping auricle. Large lanceolate underlapping auricle of approximately 50mm. Non distinct dewlap colour.

**Stalk**

Has a weak-moderate zig-zag with loose trash. Internodes are medium-thick in diameter and bobbin shaped with a moderate-heavy waxiness.

Exposed stalk is yellow-green to green to bronze and can "blush". Unexposed stalk is pale yellow to green.





CLONE	<b>SRA7</b>				
GENERAL DESCRIPTION	Stalk colour can look grey and wax band is often not obvious due to heavier wax covering on stalks				
LEAF	Colour	Pale	Mid	Dark	
	Width	Narrow	Medium	Wide	
	Flowers	Sparse	Moderate	Profuse	
	Flower shape	n/a	Shape		
SHEATH	Hairs: <i>Dorsal and sometimes lateral</i>	Absent	Sparse	Moderate	Profuse
	Size	n/a	Short	Medium	Long
	Texture: <i>Soft to touch</i>	n/a	Fine	Medium	Coarse
	Dewlap colour	Not distinctive	Other		
AURICLE	Underlapping	Yes	No	Size (mm): ~50mm	Shape: <i>Lanceolate</i>
	Overlapping	Yes	No	Size (mm):	Shape: <i>Transitional</i>
STALK	Colour (unexposed): <i>Pale yellow to green</i>				
	Colour (exposed): <i>Yellow-green to green to bronze and can "blush"</i>				
	Alignment	Straight	Zig-zag	Strength of zig-zag: <i>Weak to moderate</i>	
	Trash	Free	Loose	Moderate	Clinging / tight
INTERNODE	Diameter	Thin	Medium	Thick	
	Shape	Bobbin	Concave-convex	Conoidal	Other
	Waxiness	Light	Moderate	Heavy	
	Wax band present	Absent / not obvious	Narrow	Medium	Broad
	Bud groove	Yes	No	Size: <i>Short</i>	Depth: <i>Absent to shallow</i>
BUD	Shape	Round	Oval	Ovate	Other
	Size	Small	Medium	Large	
	Prominence	Flat	Medium	Very raised	
	Bud wing	Yes	No	Size: ~1mm	
		Top	Side	Other	
	Bud tip to growth ring	Clearly below	On or near	Clearly above	
	Bud cushion	On leaf scar	On or above	Clearly above	
GROWTH HABIT	Germination speed	Slow	Average	Rapid	
	Germination reliability	Poor	Average	Good	
	Speed of canopy closure	Slow	Average	Rapid	
	Stool habit	Sprawled	Open	Compact / closed	n/a
	Stalk population	Low	Medium	High	
	Mature canopy habit	Erect / straight	Curved tips	Arched	Curved at base
PRESENCE OF DISEASE AT INSPECTION	Smut	Nil	Slight	Moderate	Severe
	Yellow spot	Nil	Slight	Moderate	Severe
	Brown rust	Nil	Slight	Moderate	Severe
	Orange rust	Nil	Slight	Moderate	Severe
	Leaf sclad	Nil	Slight	Moderate	Severe
	Pokkah Boeng	Nil	Slight	Moderate	Severe
	Other	Nil	Slight	Moderate	Severe
OTHER	<i>More green than SRA6</i>				

## NOTES:

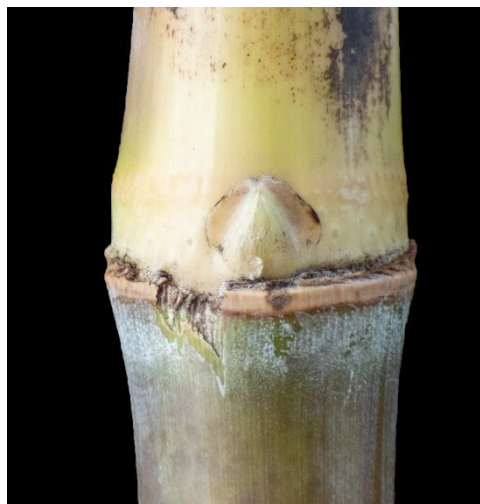
# SRA7<sup>®</sup>

**GENERAL DESCRIPTION**

- Mid-dark coloured canopy with medium-wide leaves
- Mature canopy is arched
- Sparse level of flowering
- Sparse, short and fine hairs on the dorsal only
- Open-compact/closed stool
- Medium sized wax band
- Long auricles
- Long internodes
- Growth ring is distinct yellow-green with exposed pink-red on root band.

**YEAR RELEASED IN NORTH - 2022****Bud**

Small-medium, round-ovate and very raised bud. Narrow 2mm bud wings on the top and side. Bud tip is on or near the growth ring and bud cushion is on the leaf scar. No bud groove.

**Auricle**

Transitional-lanceolate overlapping auricle of 5mm. Large lanceolate underlapping auricle of 20-30mm.

**Stalk**

Has a weak zig-zag with free to loose trash. Internodes are medium in diameter and bobbin shaped with a moderate waxiness.

Exposed stalk is waxy bronze to pale yellow-green.

Unexposed stalk is olive-green.



CLONE <b>SRA9</b>					
GENERAL DESCRIPTION <i>Nice appearance, loose trashing, slight wax covering, long auricles, erect, long internodes, erect top.</i>					
LEAF	Colour	Pale	Mid	Dark	
	Width	Narrow	Medium	Wide	
	Flowers	Sparse	Moderate	Profuse	
	Flower shape	n/a	Shape		
SHEATH	Hairs: Dorsal only	Absent	Sparse	Moderate	Profuse
	Size	n/a	Short	Medium	Long
	Texture	n/a	Fine	Medium	Coarse
	Dewlap colour	Not distinctive	Other		
AURICLE	Underlapping	Yes	No	Size (mm): 20-30mm	Shape: Lanceolate
	Overlapping	Yes	No	Size (mm): 5mm	Shape: Transitional-lanceolate
STALK	Colour (unexposed): Olive-green				
	Colour (exposed): Waxy bronze to pale yellow-green.				
	Alignment	Straight	Zig-zag	Strength of zig-zag: Weak	
	Trash	Free	Loose	Moderate	Clinging / tight
INTERNODE	Diameter	Thin	Medium	Thick	
	Shape	Bobbin	Concave-convex	Conoidal	Other
	Waxiness	Light	Moderate	Heavy	
	Wax band present	Absent / not obvious	Narrow	Medium	Broad
	Bud groove	Yes	No	Size:	Depth:
BUD	Shape	Round	Oval	Ovate	Other
	Size	Small	Medium	Large	
	Prominence	Flat	Medium	Very raised	
	Bud wing	Yes	No	Size: 2mm	
		Top	Side	Other	
	Bud tip to growth ring	Clearly below	On or near	Clearly above	
	Bud cushion	On leaf scar	On or above	Clearly above	
GROWTH HABIT	Germination speed	Slow	Average	Rapid	
	Germination reliability	Poor	Average	Good	
	Speed of canopy closure	Slow	Average	Rapid	
	Stool habit	Sprawled	Open	Compact / closed	n/a
	Stalk population	Low	Medium	High	
	Mature canopy habit	Erect / straight	Curved tips	Arched	Curved at base
PRESENCE OF DISEASE AT INSPECTION	Smut	Nil	Slight	Moderate	Severe
	Yellow spot	Nil	Slight	Moderate	Severe
	Brown rust	Nil	Slight	Moderate	Severe
	Orange rust	Nil	Slight	Moderate	Severe
	Leaf scald	Nil	Slight	Moderate	Severe
	Pokkah Boeng	Nil	Slight	Moderate	Severe
	Other	Nil	Slight	Moderate	Severe
OTHER <i>Slight wax band. Growth ring distinct yellow-green with exposed pink-red on root band.</i>					

## NOTES:

# SRA9<sup>db</sup>

### GENERAL DESCRIPTION

- Mid-dark coloured canopy with narrow-medium leaves
- Mature canopy has curved tips
- Sparse level of flowering
- Absent to very sparse hairs
- Open stool with medium stalk population
- Medium sized wax band
- Has knobbly knees
- Wax band not as obvious due to heavy wax on internode
- Auricles can be brown in colour
- Can get a 'blush' in the sun.

### YEAR RELEASED IN NORTH - 2017

#### Bud

Medium sized, round-ovate, medium to very raised bud. Narrow 1-2mm bud wings on the side. Bud tip is on or near the growth ring and bud cushion is on the leaf scar. Bud groove is medium long and shallow, if present.



#### Auricle

Transitional overlapping auricle.  
Small falcate underlapping auricle.  
Non-distinctive dewlap colour.



#### Stalk

Has a moderate zig-zag with moderate to tightly clinging trash. Internodes are medium in diameter and bobbin shaped with a moderate waxiness.

Exposed stalk is green to bronze-yellow and can "blush".

Unexposed stalk is yellow to yellow-brown to green.





CLONE <b>SRA10</b>					
GENERAL DESCRIPTION <i>Auricles can be brown in colour. Can get a "blush" in the sun.</i>					
LEAF	Colour	Pale	Mid	Dark	
	Width	Narrow	Medium	Wide	
	Flowers	Sparse	Moderate	Profuse	
	Flower shape	n/a	Shape		
SHEATH	Hairs: <i>Absent to very sparse</i>	Absent	Sparse	Moderate	Profuse
	Size	n/a	Short	Medium	Long
	Texture	n/a	Fine	Medium	Coarse
	Dewlap colour	Not distinctive	Other: <i>Yellow-brown</i>		
AURICLE	Underlapping	Yes	No	Size (mm): <i>Small</i>	Shape: <i>Falcate</i>
	Overlapping	Yes	No	Size (mm):	Shape: <i>Transitional</i>
STALK					
Colour (unexposed): <i>Yellow to yellow-brown to green</i>					
Colour (exposed): <i>Green to bronze-yellow and can "blush".</i>					
Alignment		Straight	Zig-zag	Strength of zig-zag: <i>Moderate</i>	
Trash		Free	Loose	Moderate	Clinging / tight
INTERNODE	Diameter	Thin	Medium	Thick	
	Shape	Bobbin	Concave-convex	Conoidal	Other
	Waxiness	Light	Moderate	Heavy	
	Wax band present	Absent / not obvious	Narrow	Medium	Broad
	Bud groove	Yes	No	Size: <i>Medium-long</i>	Depth: <i>Absent or very shallow</i>
BUD	Shape	Round	Oval	Ovate	Other
	Size	Small	Medium	Large	
	Prominence	Flat	Medium	Very raised	
	Bud wing	Yes	No	Size: <i>1-2mm</i>	
		Top	Side	Other:	
	Bud tip to growth ring	Clearly below	On or near	Clearly above	
GROWTH HABIT	Bud cushion	On leaf scar	On or above	Clearly above	
	Germination speed	Slow	Average	Rapid	
	Germination reliability	Poor	Average	Good	
	Speed of canopy closure	Slow	Average	Rapid	
	Stool habit	Sprawled	Open	Compact / closed	n/a
	Stalk population	Low	Medium	High	
PRESENCE OF DISEASE AT INSPECTION	Mature canopy habit	Erect / straight	Curved tips	Arched	Curved at base
	Smut	Nil	Slight	Moderate	Severe
	Yellow spot	Nil	Slight	Moderate	Severe
	Brown rust	Nil	Slight	Moderate	Severe
	Orange rust	Nil	Slight	Moderate	Severe
	Leaf sclad	Nil	Slight	Moderate	Severe
	Pokkah Boeng	Nil	Slight	Moderate	Severe
	Other: <i>Yellow leaf virus</i>	Nil	Slight	Moderate	Severe
OTHER <i>Has "knobbly knees", wax band not as obvious due to heavy wax on internode.</i>					

## NOTES:

# SRA10<sup>®</sup>

## GENERAL DESCRIPTION

- Mid coloured canopy with medium-wide leaves
- Mature canopy has curved tips
- Profuse level of flowering
- Moderate-profuse, medium-coarse hairs of medium length on dorsal and lateral sides
- Medium-broad wax band
- Open stool with medium stalk population
- Can have a mottled appearance on the stalk.

## YEAR RELEASED IN NORTH - 2018

### Bud

Small-medium sized, oval bud of medium prominence. Narrow 1-2mm brown bud wings. Bud tip is on or near the growth ring and bud cushion is on or above the leaf scar. Bud groove absent or very shallow.



### Auricle

Small deltoid overlapping auricle of 1mm. Lanceolate underlapping auricle of 5mm. Yellow-brown dewlap colour.



### Stalk

Has a moderate zig-zag with loose-moderately clinging trash. Internodes are medium in diameter and concave-convex shaped with a moderate waxiness.

Exposed stalk is darker yellow-green to yellow-brown/bronze.

Unexposed stalk is pale yellow-green.



CLONE <b>SRA15</b>					
GENERAL DESCRIPTION <i>Can have a mottled appearance on the stalk.</i>					
LEAF	Colour	Pale	Mid	Dark	
	Width	Narrow	Medium	Wide	
	Flowers	Sparse	Moderate	Profuse	
	Flower shape	n/a	Shape		
SHEATH	Hairs: <i>Dorsal and lateral</i>	Absent	Sparse	Moderate	Profuse
	Size	n/a	Short	Medium	Long
	Texture	n/a	Fine	Medium	Coarse
	Dewlap colour	Not distinctive	Other: <i>Yellow-brown</i>		
AURICLE	Underlapping	Yes	No	Size (mm): ~5mm	Shape: <i>Lanceolate</i>
	Overlapping	Yes	No	Size (mm): ~1mm	Shape: <i>Deltoid</i>
STALK	Colour (unexposed): <i>Pale yellow-green</i>				
	Colour (exposed): <i>Darker yellow-green to yellow-brown/bronze</i>				
	Alignment	Straight	Zig-zag	Strength of zig-zag: <i>Moderate</i>	
	Trash	Free	Loose	Moderate	Clinging / tight
INTERNODE	Diameter	Thin	Medium	Thick	
	Shape	Bobbin	Concave-convex	Conoidal	Other
	Waxiness	Light	Moderate	Heavy	
	Wax band present	Absent / not obvious	Narrow	Medium	Broad
	Bud groove	Yes	No	Size:	Depth: <i>Absent or very shallow</i>
BUD	Shape	Round	Oval	Ovate	Other
	Size	Small	Medium	Large	
	Prominence	Flat	Medium	Very raised	
	Bud wing	Yes	No	Size: ~1-2mm	
		Top	Side	Other: <i>Brown wings</i>	
	Bud tip to growth ring	Clearly below	On or near	Clearly above	
	Bud cushion	On leaf scar	On or above	Clearly above	
GROWTH HABIT	Germination speed	Slow	Average	Rapid	
	Germination reliability	Poor	Average	Good	
	Speed of canopy closure	Slow	Average	Rapid	
	Stool habit	Sprawled	Open	Compact / closed	n/a
	Stalk population	Low	Medium	High	
	Mature canopy habit	Erect / straight	Curved tips	Arched	Curved at base
PRESENCE OF DISEASE AT INSPECTION	Smut	Nil	Slight	Moderate	Severe
	Yellow spot	Nil	Slight	Moderate	Severe
	Brown rust	Nil	Slight	Moderate	Severe
	Orange rust	Nil	Slight	Moderate	Severe
	Leaf scald	Nil	Slight	Moderate	Severe
	Pokkah Boeng	Nil	Slight	Moderate	Severe
	Other	Nil	Slight	Moderate	Severe
OTHER					

## NOTES:

# SRA15

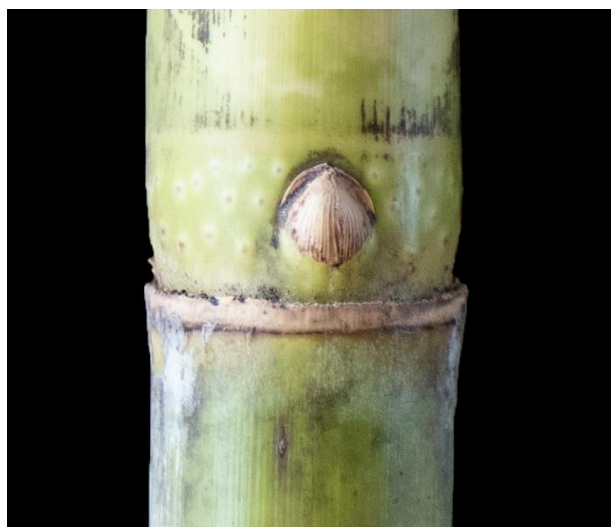
### GENERAL DESCRIPTION

- Mid coloured canopy with medium width leaves
- Mature canopy has curved tips
- Sparse level of flowering
- Sparse, short and fine hairs on dorsal side only
- Medium sized wax band
- Open stool with high stalk population
- Distinctive sickle-shaped (falcate) auricle on the underlapping side of sheath
- Strongly zig-zagging stalk.

### YEAR RELEASED IN NORTH - 2018

#### Bud

Small-medium sized, oval-ovate bud of medium prominence. Very narrow bud wings on the top. Bud tip is on or near the growth ring and bud cushion is on or above the leaf scar. Bud groove absent or very shallow.



#### Auricle

Transitional overlapping auricle. Medium-sized falcate underlapping auricle of 10-15mm. Non-distinctive dewlap colour.



#### Stalk

Has a strong zig-zag with loosely clinging trash. Internodes are medium in diameter and concave-convex shaped with a light-moderate waxiness.

Exposed stalk is yellow-green to green to brown.

Unexposed stalk is pale yellow-green.





CLONE		SRA16			
GENERAL DESCRIPTION		Distinctive sickle-shaped (falcate) auricle on the underlapping side of leaf sheath; strong zig-zag stalk.			
LEAF	Colour	Pale	Mid	Dark	
	Width	Narrow	Medium	Wide	
	Flowers	Sparse	Moderate	Profuse	
	Flower shape	n/a	Shape		
SHEATH	Hairs: <i>Dorsal only</i>	Absent	Sparse	Moderate	Profuse
	Size	n/a	Short	Medium	Long
	Texture	n/a	Fine	Medium	Coarse
	Dewlap colour	Not distinctive	Other		
AURICLE	Underlapping	Yes	No	Size (mm): 10-15mm	Shape: <i>Falcate</i>
	Overlapping	Yes	No	Size (mm):	Shape: <i>Transitional</i>
STALK	Colour (unexposed): <i>Pale yellow-green</i>				
	Colour (exposed): <i>Yellow-green to green to brown</i>				
	Alignment	Straight	Zig-zag	Strength of zig-zag: <i>Strong</i>	
	Trash	Free	Loose	Moderate	Clinging / tight
INTERNODE	Diameter	Thin	Medium	Thick	
	Shape	Bobbin	Concave-convex	Conoidal	Other
	Waxiness	Light	Moderate	Heavy	
	Wax band present	Absent / not obvious	Narrow	Medium	Broad
	Bud groove	Yes	No	Size:	Depth: <i>Absent or very shallow</i>
BUD	Shape	Round	Oval	Ovate	Other
	Size	Small	Medium	Large	
	Prominence	Flat	Medium	Very raised	
	Bud wing	Yes	No	Size: <i>Very narrow</i>	
		Top	Side	Other	
	Bud tip to growth ring	Clearly below	On or near	Clearly above	
	Bud cushion	On leaf scar	On or above	Clearly above	
GROWTH HABIT	Germination speed	Slow	Average	Rapid	
	Germination reliability	Poor	Average	Good	
	Speed of canopy closure	Slow	Average	Rapid	
	Stool habit	Sprawled	Open	Compact / closed	n/a
	Stalk population	Low	Medium	High	
	Mature canopy habit	Erect / straight	Curved tips	Arched	Curved at base
PRESENCE OF DISEASE AT INSPECTION	Smut	Nil	Slight	Moderate	Severe
	Yellow spot	Nil	Slight	Moderate	Severe
	Brown rust	Nil	Slight	Moderate	Severe
	Orange rust	Nil	Slight	Moderate	Severe
	Leaf sclad	Nil	Slight	Moderate	Severe
	Pokkah Boeng	Nil	Slight	Moderate	Severe
	Other	Nil	Slight	Moderate	Severe
OTHER					

## NOTES:

# SRA16<sup>®</sup>

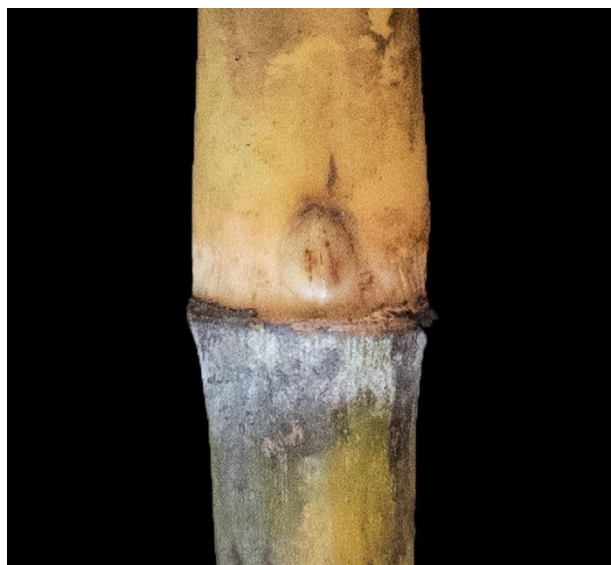
### GENERAL DESCRIPTION

- Mid coloured canopy with narrow leaves
- Mature canopy is arched or has curved tips
- Sparse level of flowering
- Moderate amount of medium length and medium coarseness hairs
- Narrow-medium wax band
- Open stool with medium stalk population
- Sprawled, thin stalk
- Many pronounced crank handles.

### YEAR RELEASED IN NORTH – 2019

#### Bud

Medium sized, oval bud of medium prominence. Bud wings present on side. Bud tip on or near the growth ring and bud cushion is on or above, to clearly above the leaf scar. Bud groove is shallow to medium and runs up to half of the internode.



#### Auricle

Transitional overlapping auricle. Transitional-lanceolate underlapping auricle of 0-2mm. Non-distinctive dewlap colour.



#### Stalk

Has no zig-zag and tightly clinging trash. Internodes are thin and uniform in shape, with a light waxiness.

Exposed stalk is yellow-green to green to brown.

Unexposed stalk is golden brown-yellow.



CLONE <b>SRA25</b>					
GENERAL DESCRIPTION <i>Sprawled thin stalk. Many pronounced crank handles.</i>					
LEAF	Colour	Pale	Mid	Dark	
	Width	Narrow	Medium	Wide	
	Flowers	Sparse	Moderate	Profuse	
	Flower shape	n/a	Shape		
SHEATH	Hairs	Absent	Sparse	Moderate	Profuse
	Size	n/a	Short	Medium	Long
	Texture	n/a	Fine	Medium	Coarse
	Dewlap colour	Not distinctive	Other		
AURICLE	Underlapping	Yes	No	Size (mm): 0-2mm	Shape: Transitional - lanceolate
	Overlapping	Yes	No	Size (mm):	Shape: Transitional
STALK	Colour (unexposed): Golden brown-yellow				
	Colour (exposed): Pale green-yellow				
	Alignment	Straight	Zig-zag	Strength of zig-zag:	
	Trash	Free	Loose	Moderate	Clinging / tight
INTERNODE	Diameter	Thin	Medium	Thick	
	Shape	Bobbin	Concave-convex	Conoidal	Other: Uniform
	Waxiness	Light	Moderate	Heavy	
	Wax band present	Absent / not obvious	Narrow	Medium	Broad
	Bud groove	Yes	No	Size: Up to half of internode	Depth: Shallow-medium
BUD	Shape	Round	Oval	Ovate	Other
	Size	Small	Medium	Large	
	Prominence	Flat	Medium	Very raised	
	Bud wing	Yes	No	Size:	
		Top	Side	Other	
	Bud tip to growth ring	Clearly below	On or near	Clearly above	
	Bud cushion	On leaf scar	On or above	Clearly above	
GROWTH HABIT	Germination speed	Slow	Average	Rapid	
	Germination reliability	Poor	Average	Good	
	Speed of canopy closure	Slow	Average	Rapid	
	Stool habit	Sprawled	Open	Compact / closed	n/a
	Stalk population	Low	Medium	High	
	Mature canopy habit	Erect / straight	Curved tips	Arched	Curved at base
PRESENCE OF DISEASE AT INSPECTION	Smut	Nil	Slight	Moderate	Severe
	Yellow spot	Nil	Slight	Moderate	Severe
	Brown rust	Nil	Slight	Moderate	Severe
	Orange rust	Nil	Slight	Moderate	Severe
	Leaf sclad	Nil	Slight	Moderate	Severe
	Pokkah Boeng	Nil	Slight	Moderate	Severe
	Other	Nil	Slight	Moderate	Severe
OTHER					

NOTES:

**SRA25** 

## GENERAL DESCRIPTION

- Mid-dark coloured canopy with medium width leaves
- Mature canopy is arched
- Moderate level of flowering
- Narrow-medium sized wax band
- Compact/closed stool with medium stalk population
- Erect, average height and width stalks
- Clean green top.

## YEAR RELEASED IN NORTH - 2019

### Bud

Medium sized, oval-ovate and very raised bud. Bud wings present on the top and side. Bud tip is clearly above the growth ring and bud cushion is on or above the leaf scar. Bud groove is very shallow.



### Auricle

Overlapping and underlapping auricles both lanceolate and approximately 10mm in length. Non-distinctive dewlap colour.



### Stalk

Has a weak zig-zag with moderately clinging trash. Internodes are medium in diameter and bobbin to concave-convex shaped with moderate waxiness.

Exposed stalk is pale green-yellow, slight waxiness.

Unexposed stalk is similar to exposed but slightly greener.





CLONE <b>SRA26</b>					
GENERAL DESCRIPTION <i>Erect average height and width stalks. Semi clinging trash. Clean green top.</i>					
LEAF	Colour	Pale	Mid	Dark	
	Width	Narrow	Medium	Wide	
	Flowers	Sparse	Moderate	Profuse	
	Flower shape	n/a	Shape		
SHEATH	Hairs	Absent	Sparse	Moderate	Profuse
	Size	n/a	Short	Medium	Long
	Texture	n/a	Fine	Medium	Coarse
	Dewlap colour	Not distinctive	Other		
AURICLE	Underlapping	Yes	No	Size (mm): 10mm	Shape: Lanceolate
	Overlapping	Yes	No	Size (mm): 10mm	Shape: Lanceolate
STALK	Colour (unexposed): <i>Similar to exposed, slightly greener</i>				
	Colour (exposed): <i>Pale green-yellow, slight waxiness</i>				
	Alignment	Straight	Zig-zag	Strength of zig-zag: Weak	
	Trash	Free	Loose	Moderate	Clinging / tight
INTERNODE	Diameter	Thin	Medium	Thick	
	Shape	Bobbin	Concave-convex	Conoidal	Other
	Waxiness	Light	Moderate	Heavy	
	Wax band present	Absent / not obvious	Narrow	Medium	Broad
	Bud groove	Yes	No	Size: short	Depth: shallow
BUD	Shape	Round	Oval	Ovate	Other
	Size	Small	Medium	Large	
	Prominence	Flat	Medium	Very raised	
	Bud wing	Yes	No	Size: med-large	
		Top	Side	Other	
	Bud tip to growth ring	Clearly below	On or near	Clearly above	
GROWTH HABIT	Bud cushion	On leaf scar	On or above	Clearly above	
	Germination speed	Slow	Average	Rapid	
	Germination reliability	Poor	Average	Good	
	Speed of canopy closure	Slow	Average	Rapid	
	Stool habit	Sprawled	Open	Compact / closed	n/a
	Stalk population	Low	Medium	High	
PRESENCE OF DISEASE AT INSPECTION	Mature canopy habit	Erect / straight	Curved tips	Arched	Curved at base
	Smut	Nil	Slight	Moderate	Severe
	Yellow spot	Nil	Slight	Moderate	Severe
	Brown rust	Nil	Slight	Moderate	Severe
	Orange rust	Nil	Slight	Moderate	Severe
	Leaf sclad	Nil	Slight	Moderate	Severe
OTHER	Pokkah Boeng	Nil	Slight	Moderate	Severe
	Other	Nil	Slight	Moderate	Severe

## NOTES:

# SRA26<sup>®</sup>

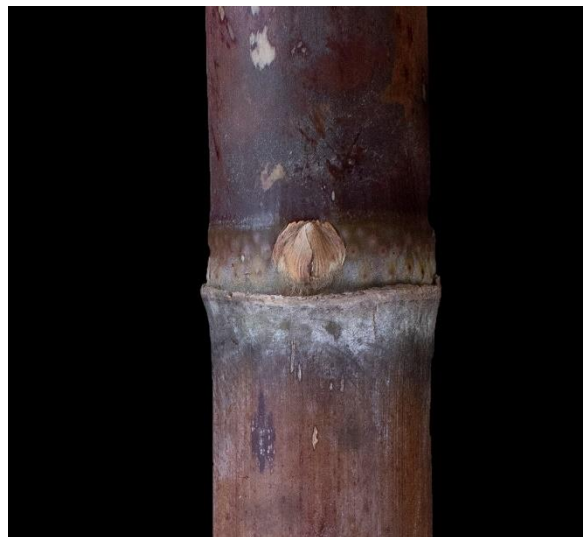
### GENERAL DESCRIPTION

- Mid coloured canopy with wide leaves
- Mature canopy is erect/straight-curved tips
- Sparse to no flowering
- Short and fine hairs on dorsal side only
- Open stool habit
- Free trashing
- Purple leaf sheath
- Poor canopy closure
- Distinct wax band
- Maroon, broad leaf
- Thick stalk

### YEAR RELEASED IN NORTH - 2019

#### Bud

Medium-large sized bud of medium prominence. Bud wings present on side. Bud tip in on or near the growth ring and bud cushion is on or above the leaf scar. Bud groove present and short.



#### Auricle

Small 3-5mm overlapping auricle and lanceolate underlapping auricle of 20-30mm. Dewlap has a reddish-pink shade.



#### Stalk

Has a weak-moderate zig-zag and is free trashing. Internodes are thick and cylindrical shaped with a light to moderate waxiness.

Exposed stalk is deep red. Unexposed stalk is yellow-brown to light maroon.



CLONE	<b>SRA27</b>				
GENERAL DESCRIPTION	Free trashing. Purple leaf sheath. Poor canopy closure. Distinct wax band, maroon/broad leaf, thick stalk.				
LEAF	Colour	Pale	Mid	Dark	
	Width	Narrow	Medium	Wide	
	Flowers	Sparse: (None)	Moderate	Profuse	
	Flower shape	n/a	Shape		
SHEATH	Hairs: Dorsal hairs only	Absent	Sparse	Moderate	Profuse
	Size	n/a	Short	Medium	Long
	Texture	n/a	Fine	Medium	Coarse
	Dewlap colour	Not distinctive	Other	Red-pink	
AURICLE	Underlapping	Yes	No	Size (mm): 20-30mm	Shape: Lanceolate
	Overlapping	Yes	No	Size (mm): 3-5mm	Shape:
STALK	Colour (unexposed): Yellow-brown to light maroon				
	Colour (exposed): Deep red				
	Alignment	Straight	Zig-zag	Strength of zig-zag: Weak-moderate	
	Trash	Free	Loose	Moderate	Clinging / tight
INTERNODE	Diameter	Thin	Medium	Thick	
	Shape	Bobbin	Concave-convex	Conoidal	Other: Cylindrical
	Waxiness	Light	Moderate	Heavy	
	Wax band present	Absent / not obvious	Narrow	Medium	Broad
	Bud groove	Yes	No	Size: Short	Depth:
BUD	Shape	Round	Oval	Ovate	Other
	Size	Small	Medium	Large	
	Prominence	Flat	Medium	Very raised	
	Bud wing	Yes	No	Size:	
		Top	Side	Other	
	Bud tip to growth ring	Clearly below	On or near	Clearly above	
	Bud cushion	On leaf scar	On or above	Clearly above	
GROWTH HABIT	Germination speed	Slow	Average	Rapid	
	Germination reliability	Poor	Average	Good	
	Speed of canopy closure	Slow	Average	Rapid	
	Stool habit	Sprawled	Open	Compact / closed	n/a
	Stalk population	Low	Medium	High	
	Mature canopy habit	Erect / straight	Curved tips	Arched	Curved at base
PRESENCE OF DISEASE AT INSPECTION	Smut	Nil	Slight	Moderate	Severe
	Yellow spot	Nil	Slight	Moderate	Severe
	Brown rust	Nil	Slight	Moderate	Severe
	Orange rust	Nil	Slight	Moderate	Severe
	Leaf scald	Nil	Slight	Moderate	Severe
	Pokkah Boeng	Nil	Slight	Moderate	Severe
	Other	Nil	Slight	Moderate	Severe
OTHER	Growth cracks present.				

## NOTES:

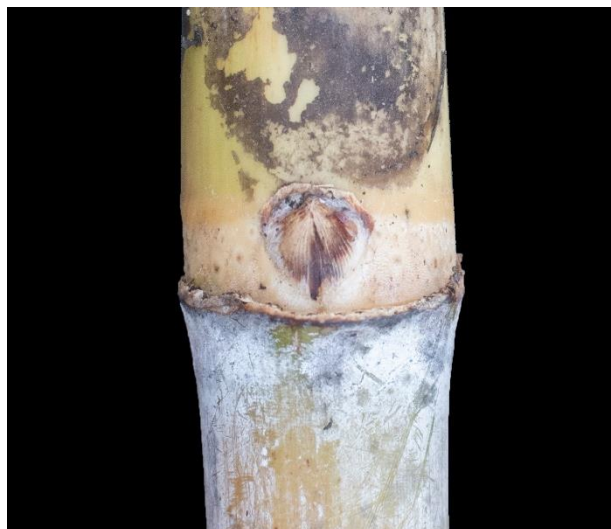
# SRA27

**GENERAL DESCRIPTION**

- Mid coloured canopy with medium width leaves
- Mature canopy is erect/straight
- Sparse level of flowering
- Moderate amount of short fine hairs.
- Narrow-medium sized wax band
- Open stool
- Heavy wax covering
- Aerial root present
- Purple tinge on leaf sheath
- Erect, compact and tight stool.

**YEAR RELEASED IN NORTH - 2020****Bud**

Small, round and flat bud. Medium sized bud wings present on the top and side. Bud tip is on or near the growth ring and bud cushion is clearly above the leaf scar. Bud groove is very shallow.

**Auricle**

Overlapping and underlapping auricles are both lanceolate, 10 and 30mm respectively in length. Non-distinctive dewlap colour.

**Stalk**

Has a weak zig-zag with moderately-tight clinging trash. Internodes are medium in diameter and concave-convex shaped with moderate-heavy waxiness.

Exposed stalk is green-bronze.

Unexposed stalk is creamy yellow-green, heavy wax.





CLONE <b>SRA28</b>					
GENERAL DESCRIPTION <i>Heavy wax covering. Aerial roots. Purple tinge on leaf sheath. Erect, compact and tight stool.</i>					
LEAF	Colour	Pale	Mid	Dark	
	Width	Narrow	Medium	Wide	
	Flowers	Sparse	Moderate	Profuse	
	Flower shape	n/a	Shape		
SHEATH	Hairs	Absent	Sparse	Moderate	Profuse
	Size	n/a	Short	Medium	Long
	Texture	n/a	Fine	Medium	Coarse
	Dewlap colour	Not distinctive	Other		
AURICLE	Underlapping	Yes	No	Size (mm): 10mm	Shape: Lanceolate
	Overlapping	Yes	No	Size (mm): 30mm	Shape: Lanceolate
STALK	Colour (unexposed): Creamy yellow-green, heavy wax				
	Colour (exposed): Green-bronze				
	Alignment	Straight	Zig-zag	Strength of zig-zag: Weak	
	Trash	Free	Loose	Moderate	Clinging / tight
INTERNODE	Diameter	Thin	Medium	Thick	
	Shape	Bobbin	Concave-convex	Conoidal	Other
	Waxiness	Light	Moderate	Heavy	
	Wax band present	Absent / not obvious	Narrow	Medium	Broad
	Bud groove	Yes	No	Size:	Depth: Very shallow
BUD	Shape	Round	Oval	Ovate	Other
	Size	Small	Medium	Large	
	Prominence	Flat	Medium	Very raised	
	Bud wing	Yes	No	Size: Medium	
		Top	Side	Other	
	Bud tip to growth ring	Clearly below	On or near	Clearly above	
	Bud cushion	On leaf scar	On or above	Clearly above	
GROWTH HABIT	Germination speed	Slow	Average	Rapid	
	Germination reliability	Poor	Average	Good	
	Speed of canopy closure	Slow	Average	Rapid	
	Stool habit	Sprawled	Open	Compact / closed	n/a
	Stalk population	Low	Medium	High	
	Mature canopy habit	Erect / straight	Curved tips	Arched	Curved at base
PRESENCE OF DISEASE AT INSPECTION	Smut	Nil	Slight	Moderate	Severe
	Yellow spot	Nil	Slight	Moderate	Severe
	Brown rust	Nil	Slight	Moderate	Severe
	Orange rust	Nil	Slight	Moderate	Severe
	Leaf scald	Nil	Slight	Moderate	Severe
	Pokkah Boeng	Nil	Slight	Moderate	Severe
	Other	Nil	Slight	Moderate	Severe
OTHER					

## NOTES:

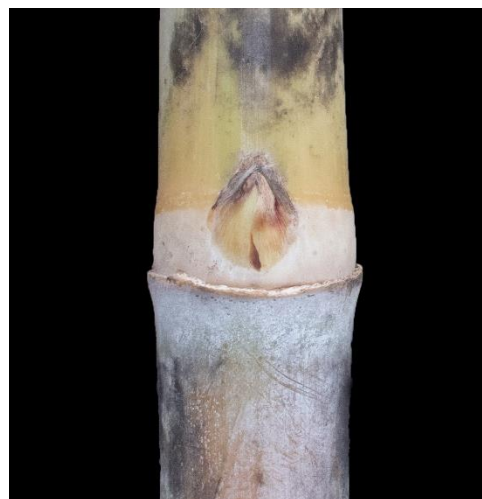
# SRA28<sup>®</sup>

**GENERAL DESCRIPTION**

- Pale coloured canopy with medium width leaves
- Mature canopy is erect/straight
- Moderate level of flowering
- Sparse amount of short fine hairs.
- Medium sized wax band
- Open stool with medium stalk population
- Wax covering on unexposed cane can give appearance of a blue tinge
- Erect spiky canopy is distinctive.

**YEAR RELEASED IN NORTH - 2022****Bud**

Medium sized, oval-ovate bud of medium prominence. Bud wings present on the top and side. Bud tip is on or near, or clearly above the growth ring and bud cushion is on or above the leaf scar. Bud groove is short and very shallow.

**Auricle**

Overlapping and underlapping auricles are both lanceolate, 5mm and 20-30mm respectively in length. Non-distinctive dewlap colour.

**Stalk**

Has a moderate zig-zag with loosely clinging trash. Internodes are thin-medium in diameter and concave-convex shaped with moderate-heavy waxiness.

Exposed stalk is bronze with some red "blush".

Unexposed stalk is pale yellow-green.



CLONE <b>SRA32</b>					
GENERAL DESCRIPTION <i>Heavy wax covering on root band.</i>					
LEAF	Colour	Pale	Mid	Dark	
	Width	Narrow	Medium	Wide	
	Flowers	Sparse	Moderate	Profuse	
	Flower shape	n/a	Shape		
SHEATH	Hairs: Dorsal only	Absent	Sparse	Moderate	Profuse
	Size	n/a	Short	Medium	Long
	Texture	n/a	Fine	Medium	Coarse
	Dewlap colour	Not distinctive	Other		
AURICLE	Underlapping	Yes	No	Size (mm): 20-30mm	Shape: Lanceolate
	Overlapping	Yes	No	Size (mm): 5mm	Shape: Lanceolate
STALK	Colour (unexposed): <i>Pale yellow-green</i>				
	Colour (exposed): <i>Bronze with some red "blush"</i>				
	Alignment	Straight	Zig-zag	Strength of zig-zag: Moderate	
	Trash	Free	Loose	Moderate	Clinging / tight
INTERNODE	Diameter	Thin	Medium	Thick	
	Shape	Bobbin	Concave-convex	Conoidal	Other
	Waxiness	Light	Moderate	Heavy	
	Wax band present	Absent / not obvious	Narrow	Medium	Broad
	Bud groove	Yes	No	Size: Short	Depth: Very shallow
BUD	Shape	Round	Oval	Ovate	Other
	Size	Small	Medium	Large	
	Prominence	Flat	Medium	Very raised	
	Bud wing	Yes	No	Size:	
		Top	Side	Other	
	Bud tip to growth ring	Clearly below	On or near	Clearly above	
	Bud cushion	On leaf scar	On or above	Clearly above	
GROWTH HABIT	Germination speed	Slow	Average	Rapid	
	Germination reliability	Poor	Average	Good	
	Speed of canopy closure	Slow	Average	Rapid	
	Stool habit	Sprawled	Open	Compact / closed	n/a
	Stalk population	Low	Medium	High	
	Mature canopy habit	Erect / straight	Curved tips	Arched	Curved at base
PRESENCE OF DISEASE AT INSPECTION	Smut	Nil	Slight	Moderate	Severe
	Yellow spot	Nil	Slight	Moderate	Severe
	Brown rust	Nil	Slight	Moderate	Severe
	Orange rust	Nil	Slight	Moderate	Severe
	Leaf scald	Nil	Slight	Moderate	Severe
	Pokkah Boeng	Nil	Slight	Moderate	Severe
	Other	Nil	Slight	Moderate	Severe
OTHER <i>Wax covering on unexposed cane can give an appearance of a blue tinge. Erect spiky canopy is distinctive.</i>					

## NOTES:

# SRA32

## GENERAL DESCRIPTION

- Pale-medium green coloured canopy with medium width leaves
- Mature canopy is has curved tips
- Sparse to no flowering
- Absent-sparse fine hairs
- Medium width wax band
- Open stool
- Can have candy stripes on stalk
- Distinctly shaped eye.

## YEAR RELEASED IN NORTH - 2022

### Bud

Distinctive large, pointed and triangular bud of medium prominence. Bud wings are present on side. Bud tip is clearly above growth ring and bud cushion is on the leaf scar. Bud groove extends up to  $\frac{3}{4}$  of the internode and ranges from shallow-deep.



### Auricle

Transitional-lanceolate overlapping auricle of 0-2mm. Lanceolate underlapping auricle of 3-5mm. Non-distinctive dewlap colour.



### Stalk

Has weak zig-zag and loose trash. Internodes are medium in diameter and concave-convex in shape with a heavy waxiness.

Exposed stalk is olive-green and sometimes has pink "blush".

Unexposed stalk is pale yellow-green and sometimes with some red.





CLONE <b>SRA37</b>					
GENERAL DESCRIPTION <i>Erect canopy, curved near tips. Distinctly shaped eye. Can have candy stripes</i>					
LEAF	Colour	Pale	Mid	Dark	
	Width	Narrow	Medium	Wide	
	Flowers	Sparse: <i>None</i>	Moderate	Profuse	
	Flower shape	n/a	Shape		
SHEATH	Hairs	Absent	Sparse	Moderate	Profuse
	Size	n/a	Short	Medium	Long
	Texture	n/a	Fine	Medium	Coarse
	Dewlap colour	Not distinctive	Other		
AURICLE	Underlapping	Yes	No	Size (mm): 3-5mm	Shape: <i>Lanceolate</i>
	Overlapping	Yes	No	Size (mm): 0-2mm	Shape: <i>Transitional - Lanceolate</i>
STALK	Colour (unexposed): <i>Pale yellow-green (sometimes with red)</i>				
	Colour (exposed): <i>Green (sometimes with pink "blush")</i>				
	Alignment	Straight	Zig-zag	Strength of zig-zag: <i>Weak</i>	
	Trash	Free	Loose	Moderate	Clinging / tight
INTERNODE	Diameter	Thin	Medium	Thick	
	Shape	Bobbin	Concave-convex	Conoidal	Other
	Waxiness	Light	Moderate	Heavy	
	Wax band present	Absent / not obvious	Narrow	Medium	Broad
	Bud groove	Yes	No	Size: <i>Up to 3/4 of interr.</i> Depth: <i>Shallow - deep</i>	
BUD	Shape	Round	Oval	Ovate	Other: <i>Triangular, pointed</i>
	Size	Small	Medium	Large	
	Prominence	Flat	Medium	Very raised	
	Bud wing	Yes	No	Size:	
		Top	Side	Other	
	Bud tip to growth ring	Clearly below	On or near	Clearly above	
	Bud cushion	On leaf scar	On or above	Clearly above	
GROWTH HABIT	Germination speed	Slow	Average	Rapid	
	Germination reliability	Poor	Average	Good	
	Speed of canopy closure	Slow	Average	Rapid	
	Stool habit	Sprawled	Open	Compact / closed	n/a
	Stalk population	Low	Medium	High	
	Mature canopy habit	Erect / straight	Curved tips	Arched	Curved at base
PRESENCE OF DISEASE AT INSPECTION	Smut	Nil	Slight	Moderate	Severe
	Yellow spot	Nil	Slight	Moderate	Severe
	Brown rust	Nil	Slight	Moderate	Severe
	Orange rust	Nil	Slight	Moderate	Severe
	Leaf scald	Nil	Slight	Moderate	Severe
	Pokkah Boeng	Nil	Slight	Moderate	Severe
	Other	Nil	Slight	Moderate	Severe
OTHER					

## NOTES:

# SRA37<sup>®</sup>

## VARIETY COMPARISONS Q208<sup>Ⓛ</sup>, Q250<sup>Ⓛ</sup>, Q252<sup>Ⓛ</sup> & Q253<sup>Ⓛ</sup>

### STALK COLOUR, WAXINESS, ALIGNMENT

---

**Q208<sup>Ⓛ</sup>**



**Exposed colour** – yellow-green to yellow  
**Stalk waxiness** – light to moderate  
**Stalk alignment** – moderate zig-zag

**Q250<sup>Ⓛ</sup>**



**Exposed colour** – yellow-green to green-bronze  
**Stalk waxiness** – light to moderate  
**Stalk alignment** – moderate zig-zag

**Q252<sup>Ⓛ</sup>**



**Exposed colour** – yellow to yellow-brown  
**Stalk waxiness** – light to moderate  
**Stalk alignment** – weak to moderate zig-zag

**Q253<sup>Ⓛ</sup>**



**Exposed colour** – yellow-green to green  
**Stalk waxiness** – moderate  
**Stalk alignment** – moderate zig-zag

## LEAFH SHEATH

Q208<sup>Ⓛ</sup>



**Leaf sheath hairs** – sparse to moderate density, dorsal side only, short length and fine texture.  
**Leaf sheath waxiness** – light waxiness

Q250<sup>Ⓛ</sup>



**Leaf sheath hairs** – absent to very sparse density, IF present, can be felt but not seen,  
**Leaf sheath waxiness** – heavy waxiness

Q252<sup>Ⓛ</sup>



**Leaf sheath hairs** – sparse to moderate density, dorsal side only, medium length and fine texture.  
**Leaf sheath waxiness** – light waxiness

Q253<sup>Ⓛ</sup>



**Leaf sheath hairs** – moderate density; dorsal side Only, medium length and fine texture.  
**Leaf sheath waxiness** – light to moderate waxiness



## VARIETY COMPARISONS Q208<sup>Ⓛ</sup>, Q250<sup>Ⓛ</sup>, Q252<sup>Ⓛ</sup> & Q253<sup>Ⓛ</sup>

### UNDERLAPPING AURICLE

---

**Q208<sup>Ⓛ</sup>**



**Auricle shape** – lanceolate  
**Auricle length** – medium to long

**Q250<sup>Ⓛ</sup>**



**Auricle shape** – lanceolate  
**Auricle length** – short

**Q252<sup>Ⓛ</sup>**



**Auricle shape** – lanceolate  
**Auricle length** – medium

**Q253<sup>Ⓛ</sup>**



**Auricle shape** – lanceolate  
**Auricle length** – medium



## OVERLAPPING AURICLE

**Q208<sup>Ⓛ</sup>**



**Auricle shape** – lanceolate  
**Auricle length** – absent to small

**Q250<sup>Ⓛ</sup>**



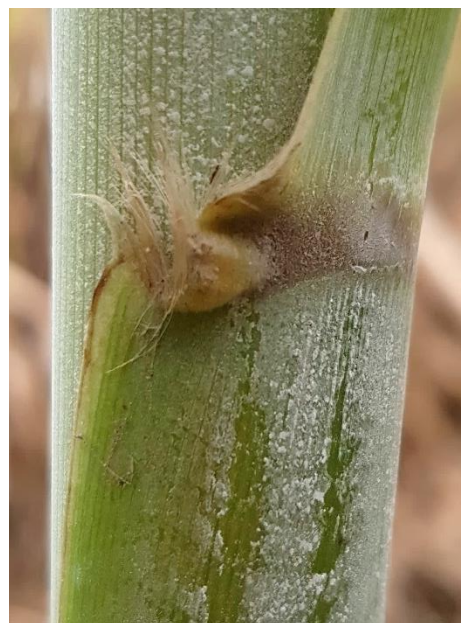
**Auricle shape** – deltoid  
**Auricle length** – absent to small

**Q252<sup>Ⓛ</sup>**



**Auricle shape** – transitional  
**Auricle length** – absent to very small

**Q253<sup>Ⓛ</sup>**



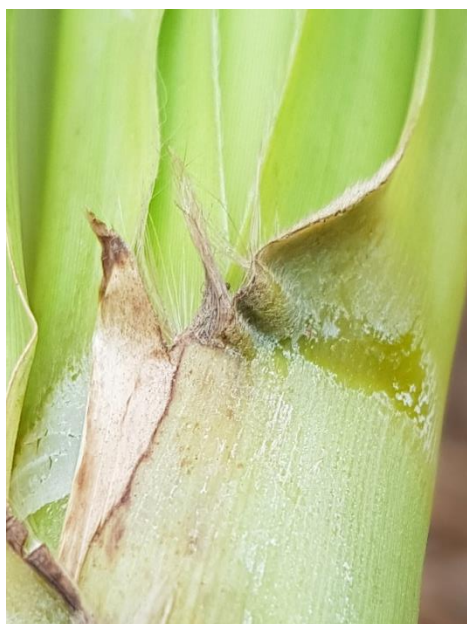
**Auricle shape** – lanceolate  
**Auricle length** – small

## VARIETY COMPARISONS Q208<sup>Ⓛ</sup>, Q250<sup>Ⓛ</sup>, Q252<sup>Ⓛ</sup> & Q253<sup>Ⓛ</sup>

### DEWLAP COLOUR

---

**Q208<sup>Ⓛ</sup>**



**Dewlap colour** – not distinctive  
(similar colour to leaf blade and sheath)

**Q250<sup>Ⓛ</sup>**



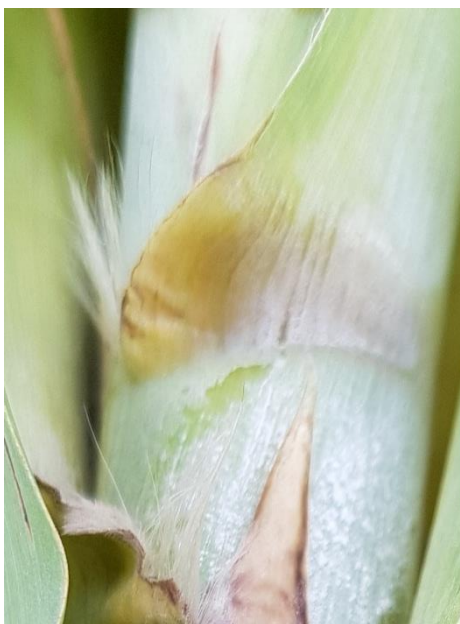
**Dewlap colour** – brown-purple

**Q252<sup>Ⓛ</sup>**



**Dewlap colour** – purple

**Q253<sup>Ⓛ</sup>**



**Dewlap colour** – yellow-brown



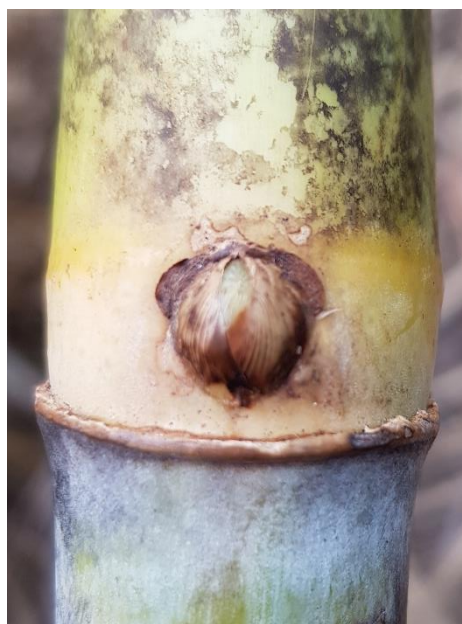
## WAX BAND, ROOT BAND, GROWTH RING

**Q208<sup>Ⓛ</sup>**



**Wax band width** – medium (obvious due to light internode waxiness)  
**Root band waxiness** – light  
**Distinctive growth ring** – not distinctive

**Q250<sup>Ⓛ</sup>**



**Wax band width** – medium (obvious due to light internode waxiness)  
**Root band waxiness** – light  
**Distinctive growth ring** – not distinctive

**Q252<sup>Ⓛ</sup>**



**Wax band width** – medium (obvious due to light internode waxiness)  
**Root band waxiness** – light to moderate  
**Distinctive growth ring** – looks like a yellow-green rubber band as is broader with no wax covering

**Q253<sup>Ⓛ</sup>**



**Wax band width** – medium (less obvious as moderate internode waxiness)  
**Root band waxiness** – heavy (appears white)  
**Distinctive growth ring** – not distinctive

## VARIETY COMPARISONS Q208<sup>Ⓛ</sup>, Q250<sup>Ⓛ</sup>, Q252<sup>Ⓛ</sup> & Q253<sup>Ⓛ</sup>

### BUD GROOVE

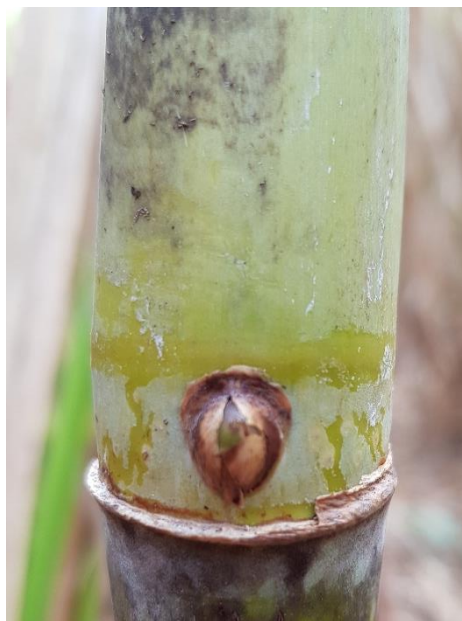
---

**Q208<sup>Ⓛ</sup>**



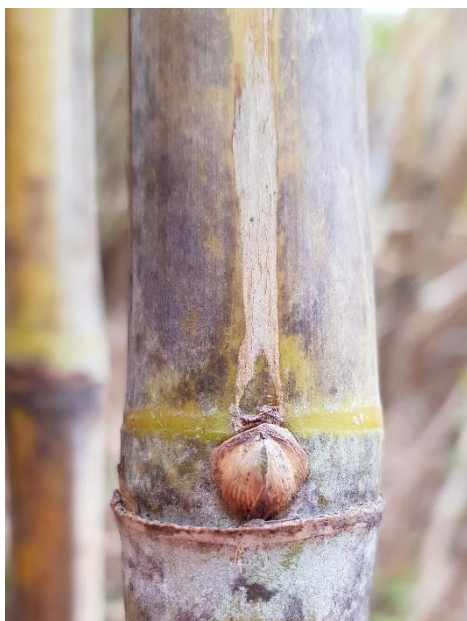
**Bud groove length** – short  
**Bud groove depth** – very shallow to shallow

**Q250<sup>Ⓛ</sup>**



**Bud groove length** – short  
**Bud groove depth** – very shallow to shallow

**Q252<sup>Ⓛ</sup>**



**Bud groove length** – long (often full length of internode)  
**Bud groove depth** – medium to deep

**Q253<sup>Ⓛ</sup>**

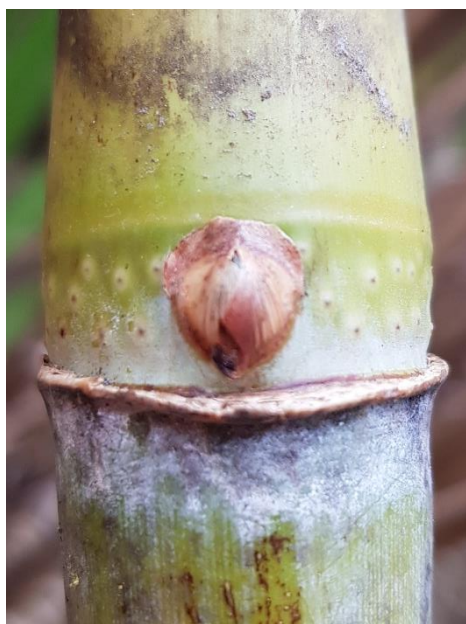


**Bud groove length** – medium (approx. half length of internode)  
**Bud groove depth** – shallow to medium



## BUD SHAPE, SIZE, POSITION

**Q208** <sup>Ⓛ</sup>



**Bud shape** – ovate, medium width bud wing present  
**Bud size** – small to medium  
**Bud position** – bud tip clearly below the growth ring, bud cushion on or slightly above the leaf scar.

**Q250** <sup>Ⓛ</sup>



**Bud shape** – round to vertical oval, med-wide bud wing  
**Bud size** – small to medium  
**Bud position** – bud tip clearly below the growth ring, bud cushion clearly above the leaf scar

**Q252** <sup>Ⓛ</sup>



**Bud shape** – round to ovate, narrow width bud wing present  
**Bud size** – medium  
**Bud position** – bud tip on or near the growth ring, bud cushion on or slightly above the leaf scar

**Q253** <sup>Ⓛ</sup>



**Bud shape** – ovate to rhomboid, narrow to medium width bud wing present  
**Bud size** – medium  
**Bud position** – bud tip on or near the growth ring, bud cushion on or slightly above the leaf scar.

## VARIETY COMPARISONS Q208<sup>Ⓛ</sup>, Q250<sup>Ⓛ</sup>, Q252<sup>Ⓛ</sup> & Q253<sup>Ⓛ</sup>

### TRASHING HABIT

---

Q208<sup>Ⓛ</sup>



Trashing habit – free trashing

Q250<sup>Ⓛ</sup>



Trashing habit – loose to moderate trashing

Q252<sup>Ⓛ</sup>



Trashing habit – free trashing

Q253<sup>Ⓛ</sup>



Trashing habit – loose trashing



# VARIETY COMPARISONS Q208<sup>♂</sup>, Q250<sup>♂</sup>, Q252<sup>♂</sup> & Q253<sup>♂</sup>

VARIETY CHARACTERISTICS	Q208 <sup>♂</sup>	Q250 <sup>♂</sup>	Q252 <sup>♂</sup>	Q253 <sup>♂</sup>
GENERAL DIFFERENCES	More yellow than Q250 <sup>♂</sup> & Q253 <sup>♂</sup> ; often profuse flowering; red stripes on leaf sheath; dewlap similar colour to sheath & leaf blade (not a distinctive colour); bud has an afro; often longest underlapping auricle.	Mostly hairless (if present can't see but can feel); waxy leaf sheath & brown-purple dewlap; trashier habit & smaller auricles than the other 3 clones; bud has a flat-top/Fresh Prince hairstyle.	Red blotches on leaf sheath; purple dewlap; fewer hairs & more yellow than Q253 <sup>♂</sup> ; bigger buds than Q208 <sup>♂</sup> & Q250 <sup>♂</sup> ; deepest and longest bud groove (full length of internode).	Waxier and more green than Q208 <sup>♂</sup> & Q252 <sup>♂</sup> when exposed; more hairs than the other 3 clones; distinctive white root band; growth cracks more common; yellow-brown dewlap.

## CANOPY

Mature canopy habit	erect & curves at tips	erect & curves at tips	erect (little cover)	erect & curves at tips
Colour	mid-green	mid-green	pale to mid-green	mid-green
Leaf width	narrow to medium	medium	narrow to medium	medium
Flowering	profuse	sparse	moderate	sparse

## LEAF SHEATH

Hairs abundance	sparse to moderate	absent to v. sparse	sparse to moderate	moderate
Hairs distribution	dorsal only	n/a	dorsal only	dorsal only
Hairs length	short	n/a	medium	medium
Hairs texture	fine	n/a	fine	fine
Leaf sheath waxiness	not distinctive	heavy	not distinctive	not distinctive
Other sheath distinctions	red stripes	n/a	red blotches	n/a
Dewlap colour	not distinctive	brown-purple	purple	yellow-brown

## UNDERLAPPING AURICLE

Shape	lanceolate	lanceolate	lanceolate	lanceolate
Size	medium to long	small	medium	medium

## OVERLAPPING AURICLE

Shape	lanceolate	deltoid	transitional	lanceolate
Size	absent to small	absent to small	absent to v. small	small

## STALK

Colour (unexposed)	pale yellow to pale green	pale yellow to yellow-green	pale yellow to pale green	pale yellow to green
Colour (exposed)	yellow-green to yellow	yellow-green to green or bronze	yellow to yellow-brown	yellow-green to green
Alignment (zig-zag)	moderate	moderate	weak to moderate	moderate
Trashing habit	free	loose to moderate	free	loose

## INTERNODE

Diameter	thin to average	average	thin to average	average to thick
Shape	concave-convex to conoidal	slight bobbin	bobbin	concave-convex
Growth cracks	possible (shallow)	uncommon	possible (v. shallow)	common (shallow)
Waxiness	weak to moderate	weak to moderate	weak to moderate	moderate
Wax band width	medium	medium	medium	medium
Root band waxiness	absent to weak	absent to weak	absent to weak	waxy (white)
Growth ring	not distinctive	not distinctive	prominent (ribbed/waxless)	not distinctive
Bud groove depth	v. shallow to shallow	absent to v. shallow	medium to deep	shallow to medium
Bud groove length	short	absent to short	long (full length)	medium (1/2 length)

## BUD

Shape	ovate	round to vertical oval	round to ovate	ovate to rhomboid
Size	small to medium	small to medium	medium	medium
Prominence	average	average to v. raised	average	average
Bud wing size	medium	medium to wide	narrow	narrow to medium
Bud wing shape	top & sides	top & sides	sides only	top & sides
Bud tip to growth ring	clearly below	clearly below	on or near	on or near
Bud cushion to leaf scar	on or slightly above	above	on or slightly above	on or slightly above

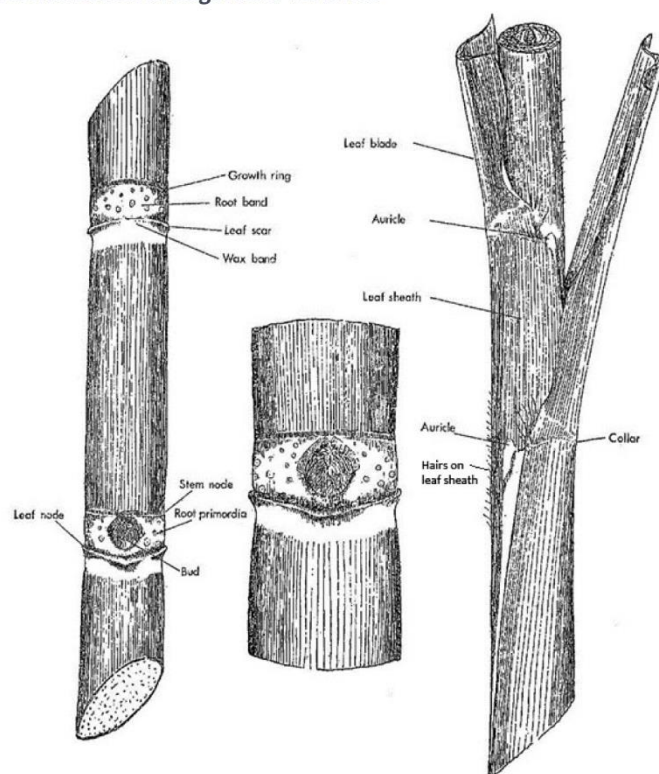
# VARIETY DESCRIPTION TEMPLATE

CLONE					
LOCATION			DATE		
GENERAL DESCRIPTION					
LEAF	Colour	Pale	Mid	Dark	
	Width	Narrow	Medium	Wide	
	Flowers	Sparse	Moderate	Profuse	
	Flower shape	n/a	Shape		
LEAF SHEATH	Hairs	Absent	Sparse	Moderate	Profuse
	Size	n/a	Short	Medium	Long
	Texture	n/a	Fine	Medium	Course
	Dewlap colour	Not distinctive	Other		
AURICLE	Underlapping	Yes / No	Size (mm)	Shape	
	Overlapping	Yes / No	Size (mm)	Shape	
STALK	Colour (unexposed)				
	Colour (exposed)				
	Alignment	Straight	Zig-zag	(strength of zig-zag)	
	Trash	Free	Loose	Moderate	Clinging/tight
INTERNODE	Diameter	Thin	Medium	Thick	
	Shape	Bobbin	Concave-convex	Conoidal	Other
	Waxiness	Light	Moderate	Heavy	
	Wax band present	Absent/not obvious	Narrow	Medium	Broad
	Bud groove	Yes / No	Size	Depth	
BUD	Shape	Round	Oval	Ovate	Other
	Size	Small	Medium	Large	
	Prominence	Flat	Medium	Very raised	
	Bud wing	Yes / No	Size	Top / Side	Other
	Bud tip to growth ring	Clearly below	On or near	Clearly above	
	Bud cushion	On leaf scar	On or above	Clearly above	
GROWTH HABIT	Germination speed	Slow	Average	Rapid	
	Germination reliability	Poor	Average	Good	
	Speed of canopy closure	Slow	Average	Rapid	
	Stool habit	Sprawled	Open	Compact/closed	n/a
	Stalk population	Low	Medium	High	
	Mature canopy habit	Erect/straight	Curved tips	Arched	Curved at base
PRESENCE OF DISEASE AT INSPECTION	Smut	Nil	Slight	Moderate	Severe
	Yellow spot	Nil	Slight	Moderate	Severe
	Brown rust	Nil	Slight	Moderate	Severe
	Orange rust	Nil	Slight	Moderate	Severe
	Leaf scald	Nil	Slight	Moderate	Severe
	Pokkah boeng	Nil	Slight	Moderate	Severe
	Other	Nil	Slight	Moderate	Severe
OTHER					

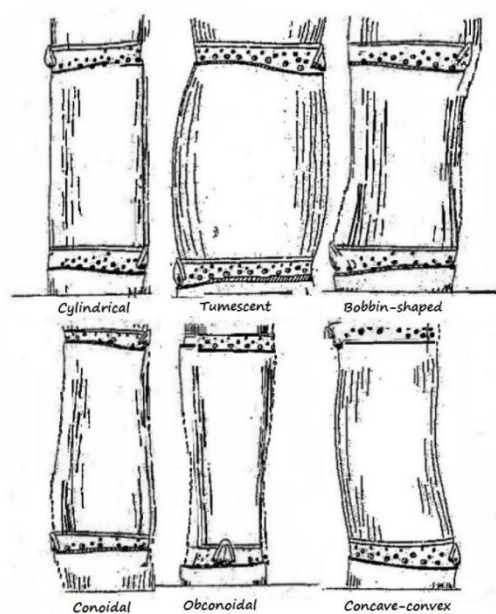


# VARIETY CHARACTERISTICS

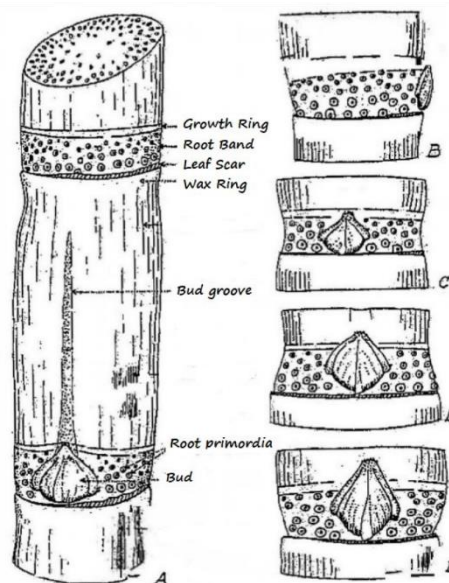
## Some Useful Observations for the Identification of Sugarcane Varieties



### Internode Shape



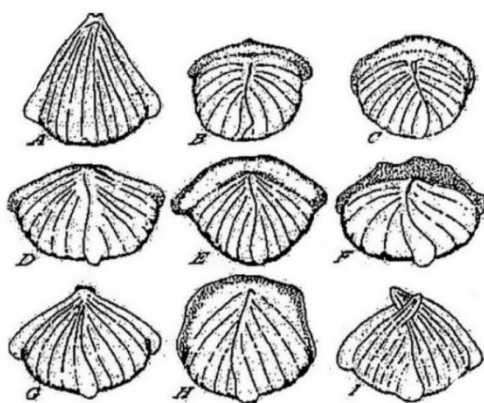
### Bud Tip Location vs Growth Ring



A. Drawing of node and internode; B. Tall root band bud tip meets growth ring; C. Narrow root band bud tip top of growth ring; D. Conoidal root band bud tip above growth ring; E. Obconoidal root band bud tip well above growth ring.

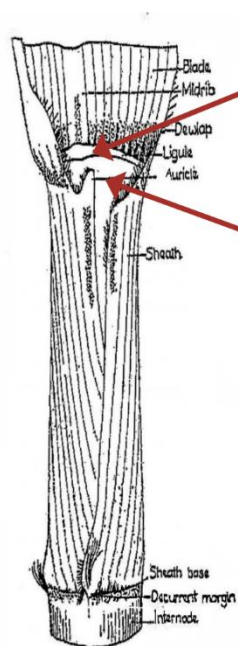
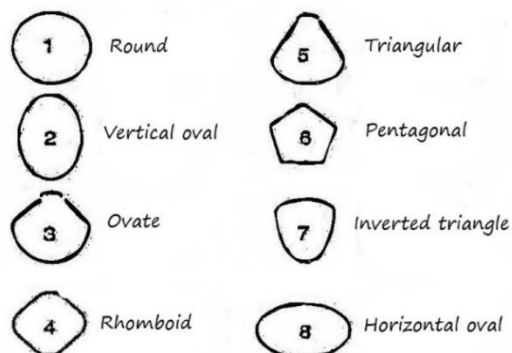
## VARIETY CHARACTERISTICS (CONTINUED)

Buds

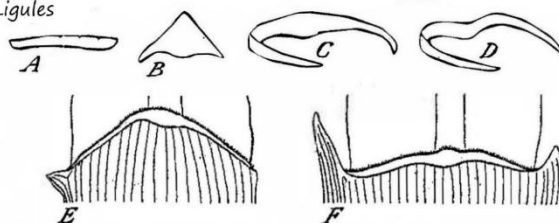


A: Triangular pointed, B: Oval, C: Obovate, D: Pentagonal  
E: Rhomboid, F: Round, G: Ovate, H: Rectangular, I: Beaked

Bud Shape

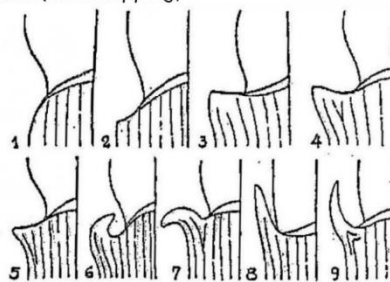


Ligules



A: Strap-shaped, B: Deltoid, C: Crescent-shaped, D: Bow-shaped, E: Asymmetrical steeply sloping ligule, F: Asymmetrical horizontal ligule.

Auricles (Underlapping)



Common shapes

1, 2 & 3: Transitional types, 4: Deltoid, 5: Dentoid, 6: Unciform, 7: Calcariform, 8: Lanceolate, 9: Falcate.

## NOTES

[illegible]



Sugar Research Australia Limited

ABN 16 163 670 068

---

**Meringa Office** 71378 Bruce Highway Gordonvale QLD 4068

**Postal Address** PO Box 122 Gordonvale QLD 4068 Australia

**Felicity Atkin**

Variety Development Manager Far North

Variety Development

**T** 0408 062 085

**E** fatkin@sugarresearch.com.au

**Rhylee Pendrigh**

Variety Officer Far North

Variety Development

**T** 0428 876 606

**E** rpendrigh@sugarresearch.com.au

**Gavin Rodman**

District Manager - Far North

Industry Services

**T** 0476 807 355

**E** grodman@sugarresearch.com.au

**Paul Calcino**

District Delivery Officer - Far North

Industry Services

**T** 0436 917 767

**E** pcalcino@sugarresearch.com.au

sugarresearch.com.au