

**Further information**

For help with identifying canegrub species or further information please contact your local adviser or SRA on 3331 3333, or visit [www.sugarresearch.com.au](http://www.sugarresearch.com.au)

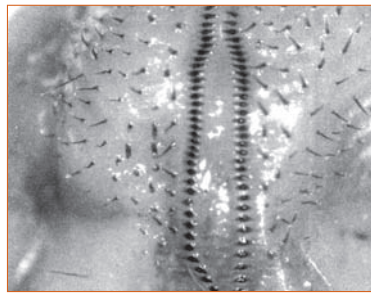
# Canegrub identification: Northern Region

Anal hair (raster) patterns of canegrubs found in the Tully to Mossman region:



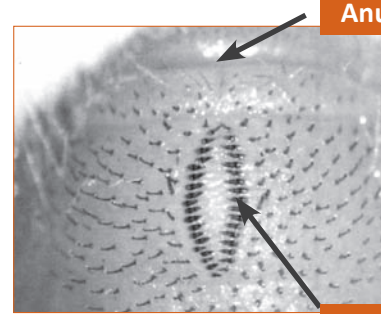
**1. Greyback**

Two almost straight rows of 20-28 short hairs.



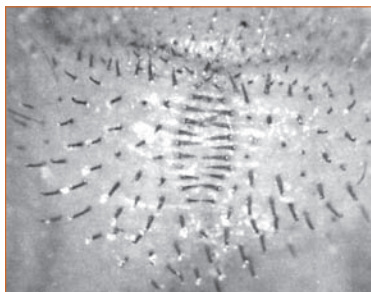
**2. Grisea**

Two straight rows of 26-34 short thick hairs.



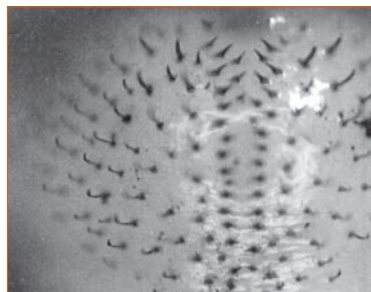
**3. Grata**

Two slightly curved rows of 18-26 thick hairs, hairs in each row close together compared with greyback.



**4. Rothe's**

Two slightly curved rows of 10-12 elongate hairs.



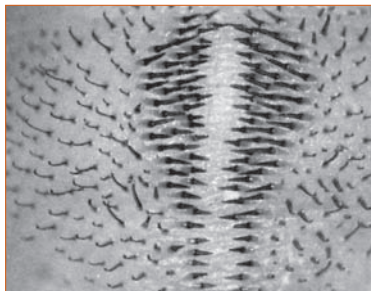
**5. Froggatt's**

Two single rows plus partial rows at rear, of 12-23 stout hairs.



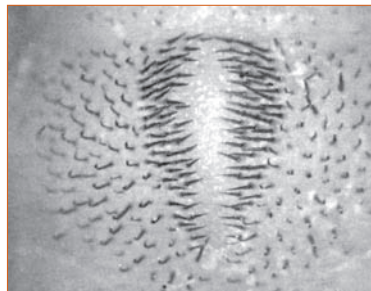
**6. Caudata**

Pear-shaped, 22-44 long hairs each side.



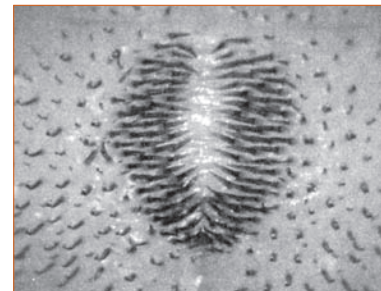
**7. Consobrina**

Pear-shaped and continuing forward as single lines of 5-8 hairs, about 50 long hairs each side.



**8. French's**

Pear-shaped, about 50 long hairs each side.



**9. Sororia**

Almost circular, about 45 long hairs each side.

