

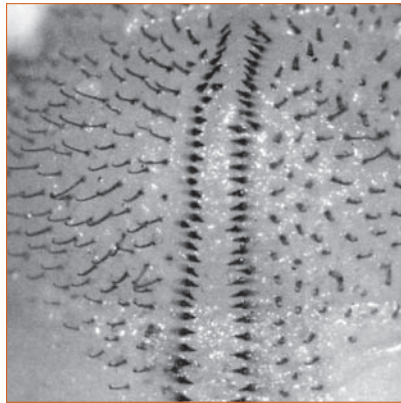
# Canegrub identification: Central Region

Anal hair (raster) patterns of canegrubs found in the Plane Creek to Proserpine region:



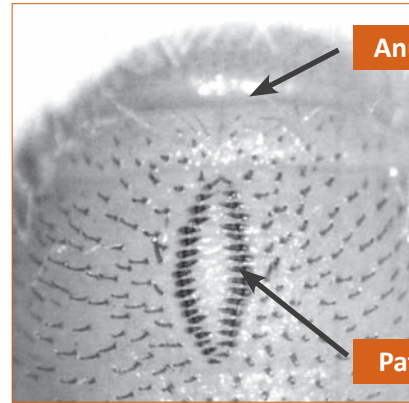
### 1. Greyback

Two almost straight rows of 20-28 short hairs.



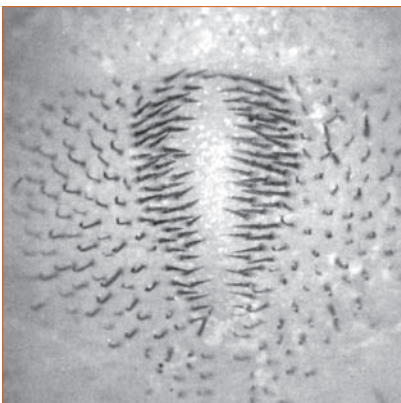
### 2. Squamulata

Two straight rows of 28-40 short thick hairs, wider gap at front.



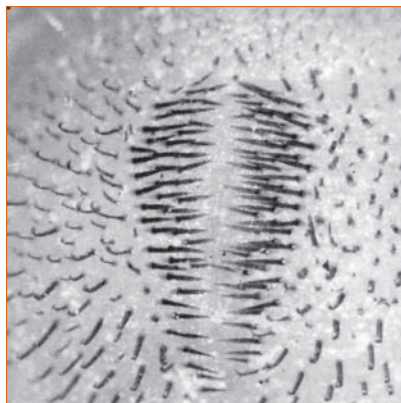
### 3. Grata

Two slightly curved rows of 18-26 thick hairs, hairs in each row close together compared with greyback.



### 4. French's

Pear-shaped, about 50 long hairs each side.



### 5. Negatoria

Pear-shaped, about 50 long hairs each side.

### Further information

For help with identifying canegrub species or further information please contact your local adviser or SRA on 3331 3333, or visit [www.sugarresearch.com.au](http://www.sugarresearch.com.au)

