

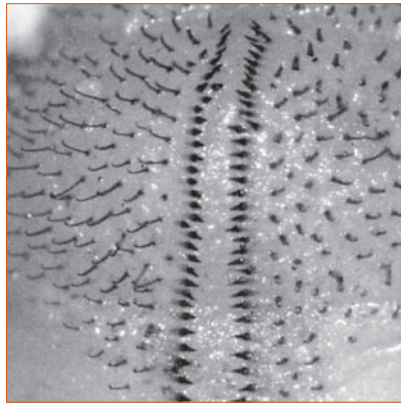
# Canegrub identification: Burdekin Region

Anal hair (raster) patterns of canegrubs found in the Burdekin region:



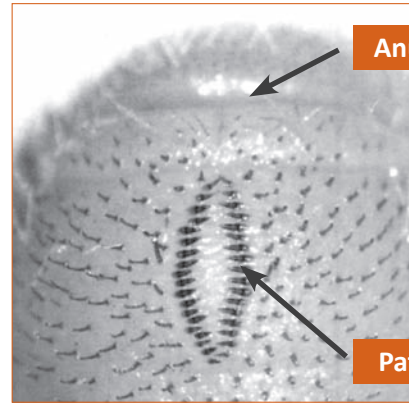
## 1. Greyback

Two almost straight rows of 20-28 short hairs.



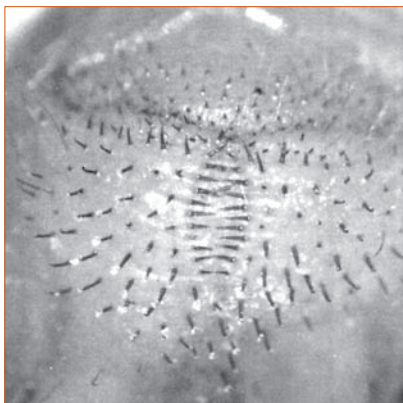
## 2. Squamulata

Two straight rows of 28-40 short thick hairs, wider gap at front.



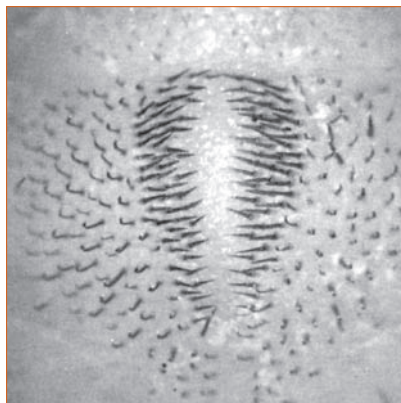
## 3. Grata

Two slightly curved rows of 18-26 thick hairs, hairs in each row close together compared with greyback.



## 4. Rothe's

Two slightly curved rows of 10-12 elongate hairs.



## 5. French's

Pear-shaped, about 50 long hairs each side.

### Further information

For help with identifying canegrub species or further information please contact your local adviser or SRA on 3331 3333, or visit [www.sugarresearch.com.au](http://www.sugarresearch.com.au)

