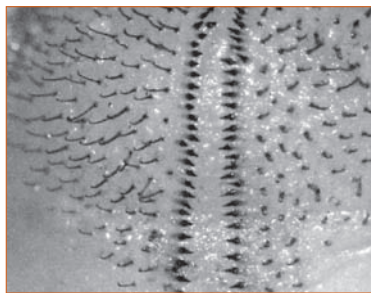


**Further information**

For help with identifying canegrub species or further information please contact your local adviser or SRA on 3331 3333, or visit [www.sugarresearch.com.au](http://www.sugarresearch.com.au)

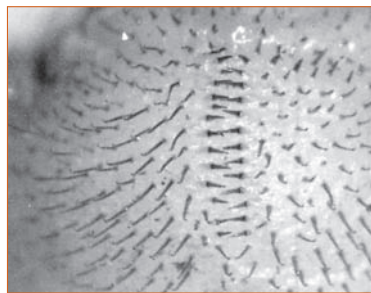
# Canegrub identification: Southern Region

Anal hair (raster) patterns of canegrubs found in the Maryborough to Bundaberg region:



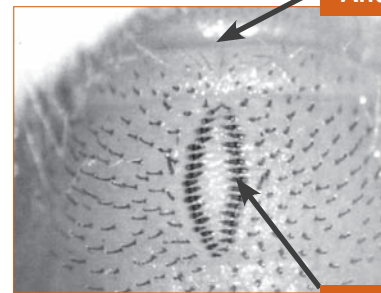
**1. Squamulata**

Two straight rows of 28-40 short thick hairs, wider gap at front (poor sand).



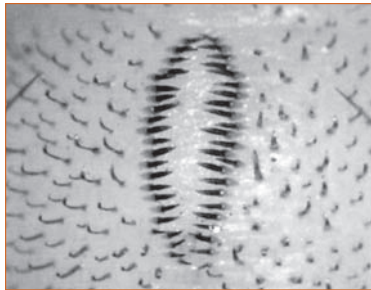
**2. Bundaberg**

Two parallel rows close together, about 15 short hairs each side.



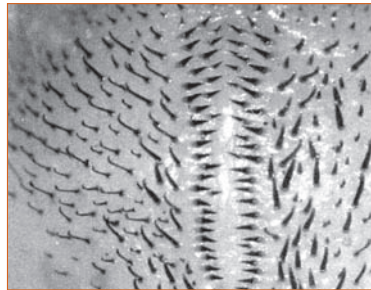
**3. Grata**

Two slightly curved rows of 18-26 thick hairs (sandy light soils).



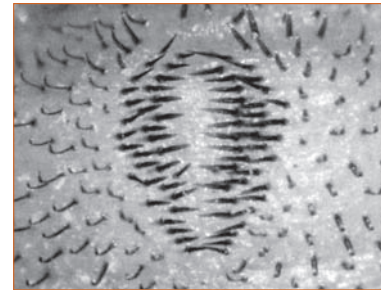
**4. Southern one-year**

Two curved rows of 19-31 thick hairs (sandy forest soils).



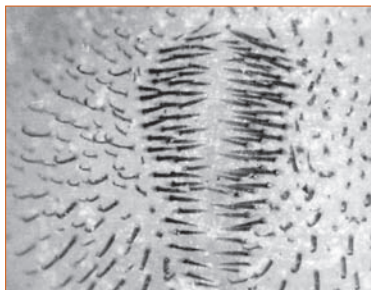
**5. Picticollis**

Two parallel single rows often with short second row at rear, 29-40 thick hairs each side (poor sandy soils).



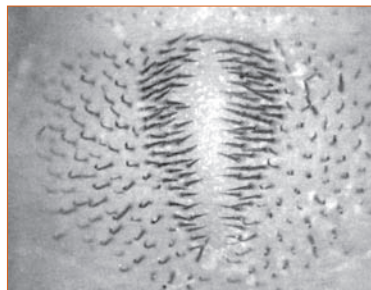
**6. Childers**

Oval-shaped, about 35 long hairs each side (volcanic – heavy alluvial soil).



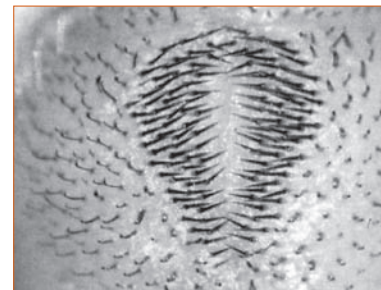
**7. Negatoria**

Pear-shaped, about 50 long hairs each side (clay-loam).



**8. French's**

Pear-shaped, about 50 long hairs each side (sandy clay-loam).



**9. Noxia**

Pear-shaped, about 50 long hairs each side (sandy podzolic).

